



[Go to Product page](#)

Datasheet for ABIN7158070  
**anti-LRRFIP2 antibody (AA 211-342)**

3 Images

Overview

Quantity:	100 µg
Target:	LRRFIP2
Binding Specificity:	AA 211-342
Reactivity:	Human
Host:	Rabbit
Clonality:	Polyclonal
Conjugate:	This LRRFIP2 antibody is un-conjugated
Application:	Western Blotting (WB), ELISA, Immunohistochemistry (IHC)

Product Details

Immunogen:	Recombinant Human Leucine-rich repeat flightless-interacting protein 2 protein (211-342AA)
Isotype:	IgG
Cross-Reactivity:	Human
Purification:	>95%, Protein G purified

Target Details

Target:	LRRFIP2
Alternative Name:	LRRFIP2 ( <a href="#">LRRFIP2 Products</a> )
Background:	Background: May function as activator of the canonical Wnt signaling pathway, in association with DVL3, upstream of CTNNB1/beta-catenin. Positively regulates Toll-like receptor (TLR)

## Target Details

---

signaling in response to agonist probably by competing with the negative FLII regulator for MYD88-binding.

Aliases: 5133400F20Rik antibody, A1850587 antibody, DKFZp434H2035 antibody, FLJ20248 antibody, FLJ22683 antibody, FLJ58304 antibody, HUF1 2 antibody, Leucine rich repeat (in FLII) interacting protein 2 antibody, Leucine rich repeat flightless interacting protein 2 antibody, Leucine-rich repeat flightless-interacting protein 2 antibody, LRR FLII interacting protein 2 antibody, LRR FLII-interacting protein 2 antibody, LRRF2\_HUMAN antibody, Lrrfip2 antibody

UniProt: [Q9Y608](#)

## Application Details

---

Application Notes: Recommended dilution: WB:1:500-1:5000, IHC:1:200-1:500,

Restrictions: For Research Use only

## Handling

---

Format: Liquid

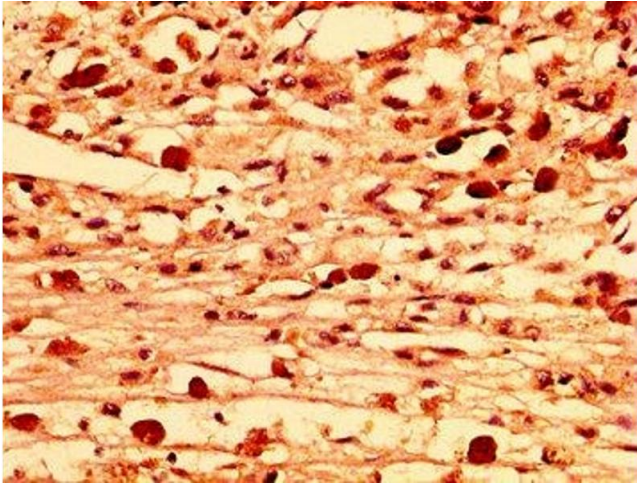
Buffer: Preservative: 0.03 % Proclin 300  
Constituents: 50 % Glycerol, 0.01M PBS, pH 7.4

Preservative: ProClin

Precaution of Use: This product contains ProClin: a POISONOUS AND HAZARDOUS SUBSTANCE which should be handled by trained staff only.

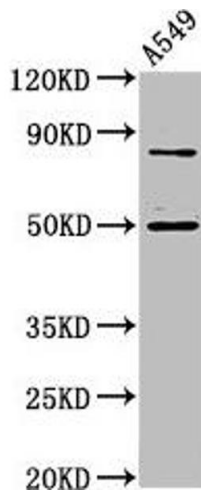
Storage: -20 °C,-80 °C

Storage Comment: Upon receipt, store at -20°C or -80°C. Avoid repeated freeze.



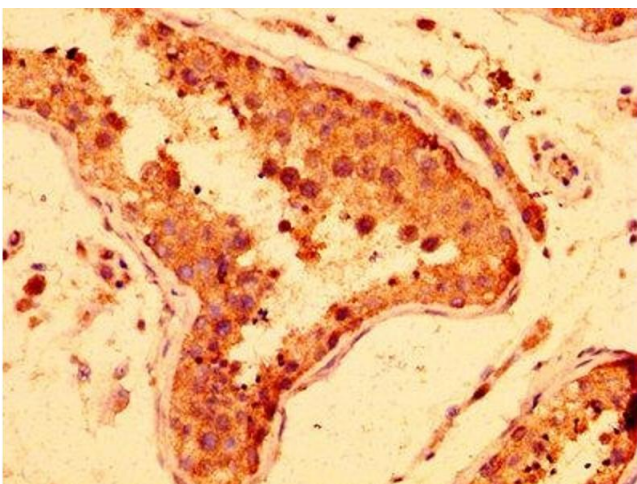
### Immunohistochemistry

**Image 1.** IHC image of ABIN7158070 diluted at 1:300 and staining in paraffin-embedded human melanoma performed on a Leica Bond™ system. After dewaxing and hydration, antigen retrieval was mediated by high pressure in a citrate buffer (pH 6.0). Section was blocked with 10% normal goat serum 30min at RT. Then primary antibody (1% BSA) was incubated at 4°C overnight. The primary is detected by a biotinylated secondary antibody and visualized using an HRP conjugated SP system.



### Western Blotting

**Image 2.** Western Blot Positive WB detected in: A549 whole cell lysate All lanes: LRRFIP2 antibody at 4.8 µg/mL Secondary Goat polyclonal to rabbit IgG at 1/50000 dilution Predicted band size: 83, 46, 12, 49, 58 kDa Observed band size: 83, 49 kDa



### Immunohistochemistry

**Image 3.** IHC image of ABIN7158070 diluted at 1:300 and staining in paraffin-embedded human testis tissue performed on a Leica Bond™ system. After dewaxing and hydration, antigen retrieval was mediated by high pressure in a citrate buffer (pH 6.0). Section was blocked with 10% normal goat serum 30min at RT. Then primary antibody (1% BSA) was incubated at 4°C overnight. The primary is detected by a biotinylated secondary antibody and visualized using an HRP conjugated SP system.