



[Go to Product page](#)

Datasheet for ABIN7158074

## anti-LGI2 antibody (AA 194-310)

### 1 Image

#### Overview

Quantity:	100 µg
Target:	LGI2
Binding Specificity:	AA 194-310
Reactivity:	Human
Host:	Rabbit
Clonality:	Polyclonal
Conjugate:	This LGI2 antibody is un-conjugated
Application:	ELISA, Immunohistochemistry (IHC)

#### Product Details

Immunogen:	Recombinant Human Leucine-rich repeat LGI family member 2 protein (194-310AA)
Isotype:	IgG
Cross-Reactivity:	Human
Purification:	>95%, Protein G purified

#### Target Details

Target:	LGI2
Alternative Name:	LGI2 ( <a href="#">LGI2 Products</a> )
Background:	Background: extracellular region Aliases: LGI2 antibody, KIAA1916 antibody, LGIL2Leucine-rich repeat LGI family member 2

## Target Details

antibody, LGI1-like protein 2 antibody, Leucine-rich glioma-inactivated protein 2 antibody

UniProt: [Q8N0V4](#)

## Application Details

Application Notes: Recommended dilution: IHC:1:20-1:200,

Restrictions: For Research Use only

## Handling

Format: Liquid

Buffer: Preservative: 0.03 % Proclin 300  
Constituents: 50 % Glycerol, 0.01M PBS, pH 7.4

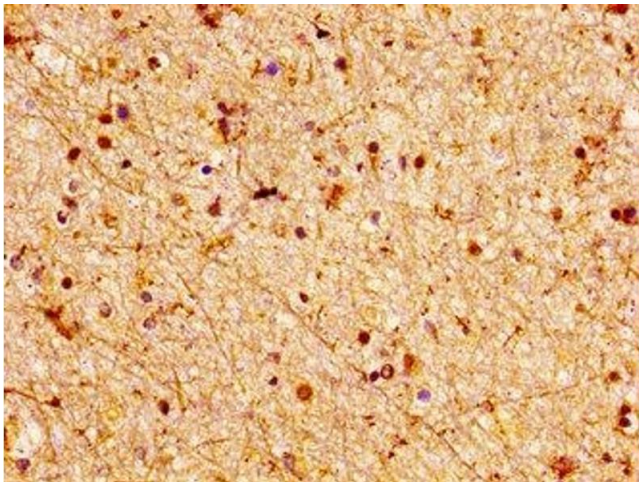
Preservative: ProClin

Precaution of Use: This product contains ProClin: a POISONOUS AND HAZARDOUS SUBSTANCE which should be handled by trained staff only.

Storage: -20 °C,-80 °C

Storage Comment: Upon receipt, store at -20°C or -80°C. Avoid repeated freeze.

## Images



### Immunohistochemistry

**Image 1.** IHC image of ABIN7158074 diluted at 1:100 and staining in paraffin-embedded human brain tissue performed on a Leica Bond™ system. After dewaxing and hydration, antigen retrieval was mediated by high pressure in a citrate buffer (pH 6.0). Section was blocked with 10% normal goat serum 30min at RT. Then primary antibody (1% BSA) was incubated at 4°C overnight. The primary is detected by a biotinylated secondary antibody and visualized using an HRP conjugated SP system.