

Datasheet for ABIN7158078
anti-LGI4 antibody (AA 292-412)[Go to Product page](#)

2 Images

Overview

Quantity:	100 µg
Target:	LGI4
Binding Specificity:	AA 292-412
Reactivity:	Human
Host:	Rabbit
Clonality:	Polyclonal
Conjugate:	This LGI4 antibody is un-conjugated
Application:	ELISA, Immunohistochemistry (IHC)

Product Details

Immunogen:	Recombinant Human Leucine-rich repeat LGI family member 4 protein (292-412AA)
Isotype:	IgG
Cross-Reactivity:	Human
Purification:	>95%, Protein G purified

Target Details

Target:	LGI4
Alternative Name:	LGI4 (LGI4 Products)
Background:	Background: extracellular region Aliases: Leucine rich glioma inactivated gene 4 antibody, Leucine rich glioma inactivated protein

Target Details

4 antibody, Leucine rich repeat LGI family member 4 antibody, Leucine-rich glioma-inactivated protein 4 antibody, Leucine-rich repeat LGI family member 4 antibody, LGI1 like protein 3 antibody, LGI1-like protein 3 antibody, LGI4 antibody, Lgi4 protein antibody, LGI4_HUMAN antibody, Lgil3 antibody

UniProt: [Q8N135](#)

Application Details

Application Notes: Recommended dilution: IHC:1:200-1:500,

Restrictions: For Research Use only

Handling

Format: Liquid

Buffer: Preservative: 0.03 % Proclin 300
Constituents: 50 % Glycerol, 0.01M PBS, pH 7.4

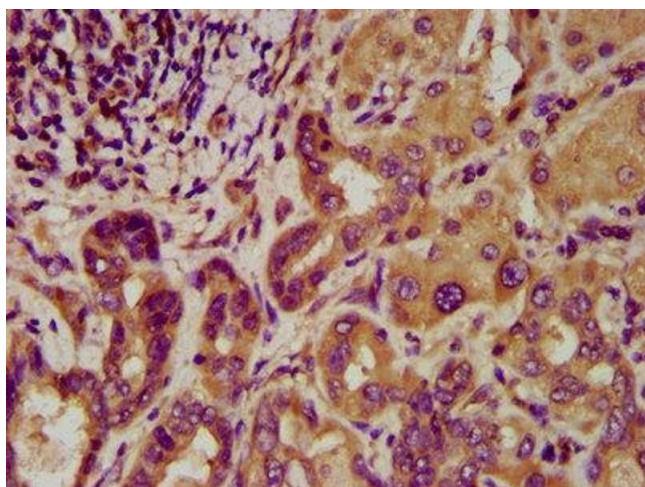
Preservative: ProClin

Precaution of Use: This product contains ProClin: a POISONOUS AND HAZARDOUS SUBSTANCE which should be handled by trained staff only.

Storage: -20 °C,-80 °C

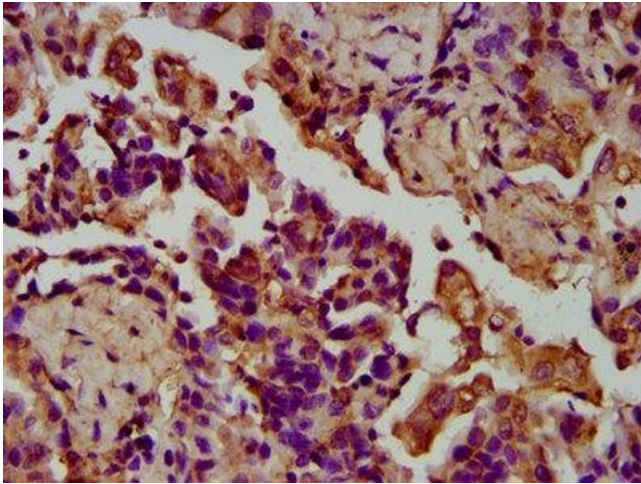
Storage Comment: Upon receipt, store at -20°C or -80°C. Avoid repeated freeze.

Images



Immunohistochemistry

Image 1. IHC image of ABIN7158078 diluted at 1:200 and staining in paraffin-embedded human liver cancer performed on a Leica Bond™ system. After dewaxing and hydration, antigen retrieval was mediated by high pressure in a citrate buffer (pH 6.0). Section was blocked with 10% normal goat serum 30min at RT. Then primary antibody (1% BSA) was incubated at 4°C overnight. The primary is detected by a biotinylated secondary antibody and visualized using an HRP conjugated SP system.



Immunohistochemistry

Image 2. IHC image of ABIN7158078 diluted at 1:200 and staining in paraffin-embedded human lung cancer performed on a Leica Bond™ system. After dewaxing and hydration, antigen retrieval was mediated by high pressure in a citrate buffer (pH 6.0). Section was blocked with 10% normal goat serum 30min at RT. Then primary antibody (1% BSA) was incubated at 4°C overnight. The primary is detected by a biotinylated secondary antibody and visualized using an HRP conjugated SP system.