



[Go to Product page](#)

Datasheet for ABIN7158082
anti-LRRN1 antibody (AA 26-631)

2 Images

Overview

Quantity:	100 µg
Target:	LRRN1
Binding Specificity:	AA 26-631
Reactivity:	Human
Host:	Rabbit
Clonality:	Polyclonal
Conjugate:	This LRRN1 antibody is un-conjugated
Application:	ELISA, Immunohistochemistry (IHC)

Product Details

Immunogen:	Recombinant Human Leucine-rich repeat neuronal protein 1 protein (26-631AA)
Isotype:	IgG
Cross-Reactivity:	Human
Purification:	>95%, Protein G purified

Target Details

Target:	LRRN1
Alternative Name:	LRRN1 (LRRN1 Products)
Background:	FIGLER3 antibody, KIAA1497 antibody, Leucine-rich repeat neuronal protein 1 antibody, Lrrn1 antibody, LRRN1_HUMAN antibody, Nbla10449 antibody, Neuronal leucine-rich repeat protein 1

Target Details

antibody, NLRR-1 antibody

UniProt: [Q6UXK5](#)

Application Details

Application Notes: Recommended dilution: IHC:1:20-1:200,

Restrictions: For Research Use only

Handling

Format: Liquid

Buffer: Preservative: 0.03 % Proclin 300
Constituents: 50 % Glycerol, 0.01M PBS, PH 7.4

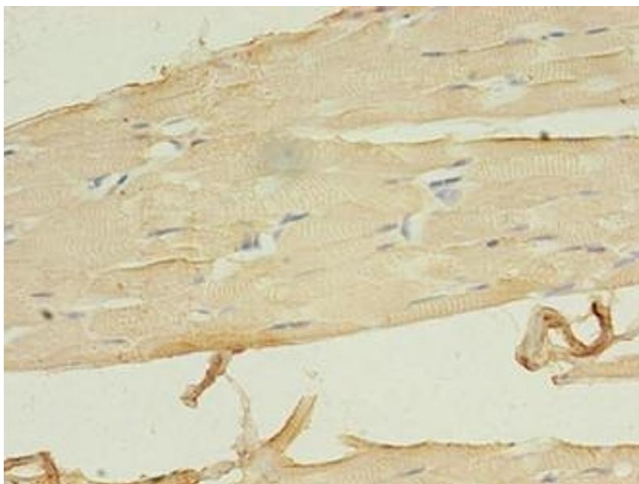
Preservative: ProClin

Precaution of Use: This product contains ProClin: a POISONOUS AND HAZARDOUS SUBSTANCE which should be handled by trained staff only.

Storage: -20 °C,-80 °C

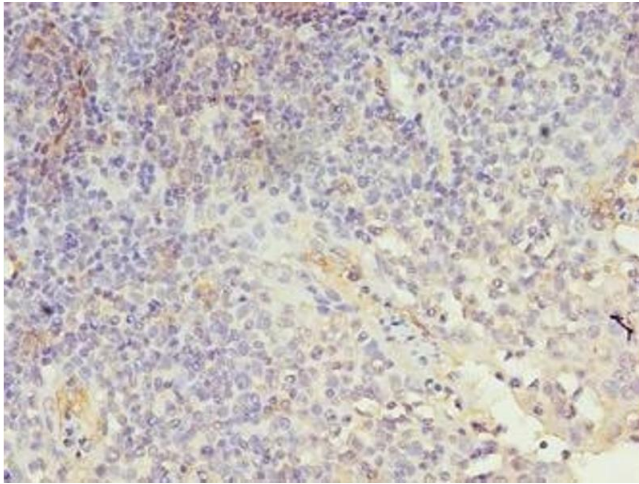
Storage Comment: Upon receipt, store at -20°C or -80°C. Avoid repeated freeze.

Images



Immunohistochemistry

Image 1. Immunohistochemistry of paraffin-embedded human skeletal muscle tissue using ABIN7158082 at dilution of 1:100



Immunohistochemistry

Image 2. Immunohistochemistry of paraffin-embedded human tonsil tissue using ABIN7158082 at dilution of 1:100