



[Go to Product page](#)

Datasheet for ABIN7158090
anti-LRRN3 antibody (AA 201-500)

3 Images

Overview

Quantity:	100 µg
Target:	LRRN3
Binding Specificity:	AA 201-500
Reactivity:	Human
Host:	Rabbit
Clonality:	Polyclonal
Conjugate:	This LRRN3 antibody is un-conjugated
Application:	Western Blotting (WB), ELISA, Immunohistochemistry (IHC), Immunofluorescence (IF)

Product Details

Immunogen:	Recombinant Human Leucine-rich repeat neuronal protein 3 protein (201-500AA)
Isotype:	IgG
Cross-Reactivity:	Human, Mouse
Purification:	>95%, Protein G purified

Target Details

Target:	LRRN3
Alternative Name:	LRRN3 (LRRN3 Products)
Background:	LRRN3 antibody, Nbla10363 antibody, UNQ194/PRO220 antibody, Leucine-rich repeat neuronal protein 3 antibody, Neuronal leucine-rich repeat protein 3 antibody, NLRR-3 antibody

Target Details

UniProt: [Q9H3W5](#)

Application Details

Application Notes: Recommended dilution: WB:1:500-1:2000, IHC:1:20-1:200, IF:1:50-1:200,

Restrictions: For Research Use only

Handling

Format: Liquid

Buffer: Preservative: 0.03 % Proclin 300
Constituents: 50 % Glycerol, 0.01M PBS, PH 7.4

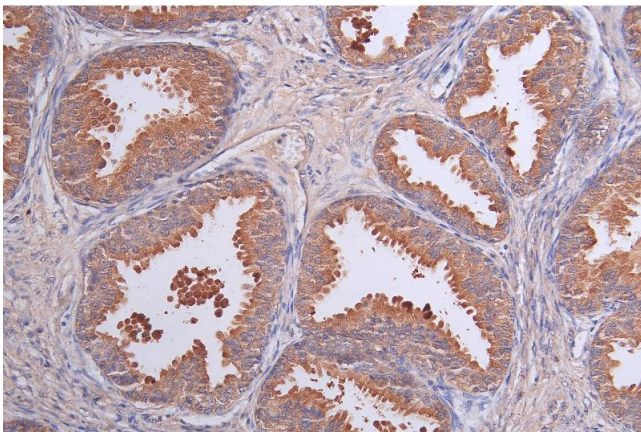
Preservative: ProClin

Precaution of Use: This product contains ProClin: a POISONOUS AND HAZARDOUS SUBSTANCE which should be handled by trained staff only.

Storage: -20 °C,-80 °C

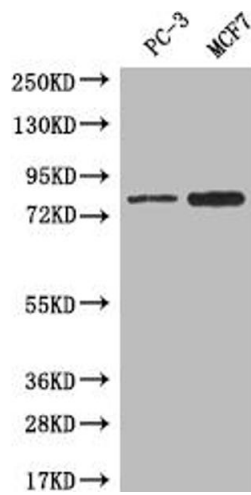
Storage Comment: Upon receipt, store at -20°C or -80°C. Avoid repeated freeze.

Images



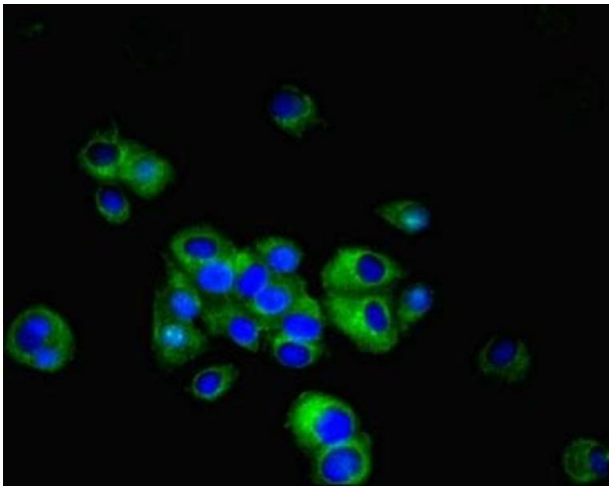
Immunohistochemistry

Image 1. Immunohistochemistry of paraffin-embedded human kidney tissue using ABIN7158090 at dilution of 1:100



Western Blotting

Image 2. Western blot All lanes: LRRN3 antibody at 0.5 μ g/mL + Mouse liver tissue Secondary Goat polyclonal to rabbit IgG at 1/10000 dilution Predicted band size: 79 kDa Observed band size: 79 kDa



Immunofluorescence

Image 3. Immunofluorescent analysis of MCF-7 cells using ABIN7158090 at dilution of 1:100 and Alexa Fluor 488-conjugated AffiniPure Goat Anti-Rabbit IgG(H+L)