

Datasheet for ABIN7158130
anti-LGR5 antibody (AA 241-352)

2 Images

[Go to Product page](#)

Overview

Quantity:	100 µg
Target:	LGR5
Binding Specificity:	AA 241-352
Reactivity:	Human
Host:	Rabbit
Clonality:	Polyclonal
Conjugate:	This LGR5 antibody is un-conjugated
Application:	Immunohistochemistry (IHC), ELISA, Immunofluorescence (IF)

Product Details

Immunogen:	Recombinant Human Leucine-rich repeat-containing G-protein coupled receptor 5 protein (241-352AA)
Isotype:	IgG
Cross-Reactivity:	Human
Purification:	>95%, Protein G purified

Target Details

Target:	LGR5
Alternative Name:	LGR5 (LGR5 Products)
Background:	Background: Receptor for R-spondins that potentiates the canonical Wnt signaling pathway and

Target Details

acts as a stem cell marker of the intestinal epithelium and the hair follicle. Upon binding to R-spondins (RSP01, RSP02, RSP03 or RSP04), associates with phosphorylated LRP6 and frizzled receptors that are activated by extracellular Wnt receptors, triggering the canonical Wnt signaling pathway to increase expression of target genes. In contrast to classical G-protein coupled receptors, does not activate heterotrimeric G-proteins to transduce the signal. Involved in the development and/or maintenance of the adult intestinal stem cells during postembryonic development.

Aliases: FEX antibody, G protein coupled receptor 49 antibody, G protein coupled receptor 67 antibody, g protein-coupled receptor fex antibody, G-protein coupled receptor 49 antibody, G-protein coupled receptor 67 antibody, G-protein coupled receptor HG38 antibody, GPCR GPR49 antibody, GPR 49 antibody, GPR 67 antibody, GPR49 antibody, GPR67 antibody, GRP 49 antibody, GRP49 antibody, HG 38 antibody, HG38 antibody, Leucine rich repeat containing G protein coupled receptor 5 antibody, Leucine-rich repeat-containing G-protein coupled receptor 5 antibody, LGR 5 antibody, LGR5 antibody, LGR5_HUMAN antibody, MGC117008 antibody, Orphan G protein coupled receptor HG38 antibody

UniProt: [O75473](#)

Pathways: [WNT Signaling](#)

Application Details

Application Notes: Recommended dilution: IHC:1:200-1:500, IF:1:50-1:200,

Restrictions: For Research Use only

Handling

Format: Liquid

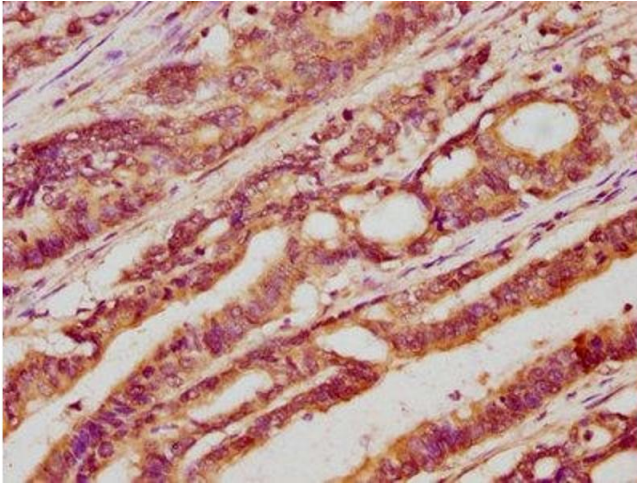
Buffer: Preservative: 0.03 % Proclin 300
Constituents: 50 % Glycerol, 0.01M PBS, pH 7.4

Preservative: ProClin

Precaution of Use: This product contains ProClin: a POISONOUS AND HAZARDOUS SUBSTANCE which should be handled by trained staff only.

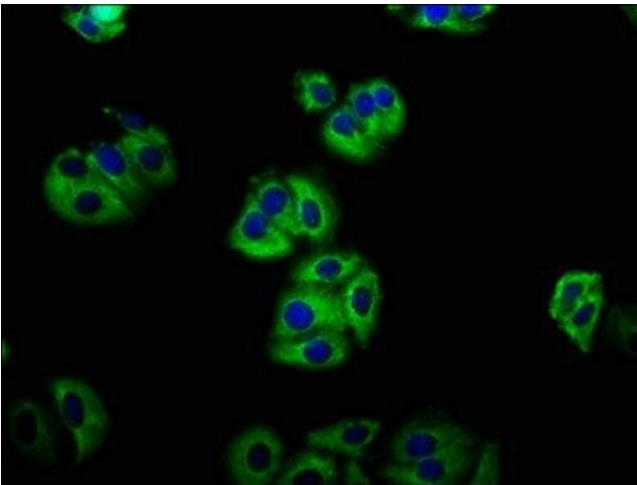
Storage: -20 °C, -80 °C

Storage Comment: Upon receipt, store at -20°C or -80°C. Avoid repeated freeze.



Immunohistochemistry

Image 1. IHC image of ABIN7158130 diluted at 1:400 and staining in paraffin-embedded human colon cancer performed on a Leica Bond™ system. After dewaxing and hydration, antigen retrieval was mediated by high pressure in a citrate buffer (pH 6.0). Section was blocked with 10% normal goat serum 30min at RT. Then primary antibody (1% BSA) was incubated at 4°C overnight. The primary is detected by a biotinylated secondary antibody and visualized using an HRP conjugated SP system.



Immunofluorescence

Image 2. Immunofluorescence staining of HepG2 cells with ABIN7158130 at 1:133, counter-stained with DAPI. The cells were fixed in 4% formaldehyde, permeabilized using 0.2% Triton X-100 and blocked in 10% normal Goat Serum. The cells were then incubated with the antibody overnight at 4°C. The secondary antibody was Alexa Fluor 488-conjugated AffiniPure Goat Anti-Rabbit IgG(H+L).