



[Go to Product page](#)

Datasheet for ABIN7158146
anti-LRRC19 antibody (AA 25-270)

3 Images

Overview

Quantity:	100 µg
Target:	LRRC19
Binding Specificity:	AA 25-270
Reactivity:	Human
Host:	Rabbit
Clonality:	Polyclonal
Conjugate:	This LRRC19 antibody is un-conjugated
Application:	ELISA, Immunohistochemistry (IHC), Immunofluorescence (IF)

Product Details

Immunogen:	Recombinant Human Leucine-rich repeat-containing protein 19 protein (25-270AA)
Isotype:	IgG
Cross-Reactivity:	Human
Purification:	>95%, Protein G purified

Target Details

Target:	LRRC19
Alternative Name:	LRRC19 (LRRC19 Products)
Background:	FLJ21302 antibody, Leucine rich repeat containing 19 antibody, leucine rich repeat containing protein 19 antibody, Leucine-rich repeat-containing protein 19 antibody, LRC19_HUMAN

Target Details

antibody, LRRC 19 antibody, LRRC19 antibody

UniProt: [Q9H756](#)

Application Details

Application Notes: Recommended dilution: IHC:1:20-1:200, IF:1:200-1:500,

Restrictions: For Research Use only

Handling

Format: Liquid

Buffer: Preservative: 0.03 % Proclin 300
Constituents: 50 % Glycerol, 0.01M PBS, PH 7.4

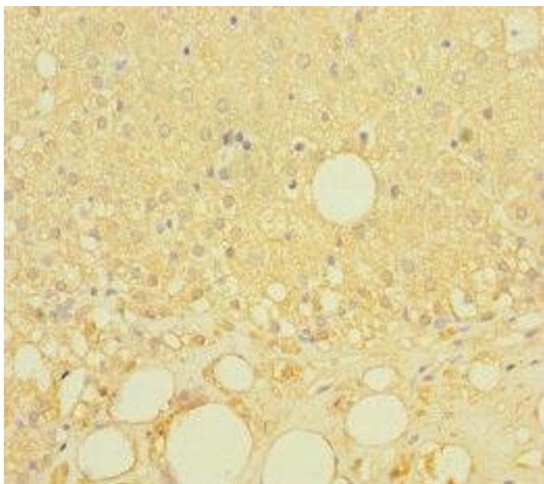
Preservative: ProClin

Precaution of Use: This product contains ProClin: a POISONOUS AND HAZARDOUS SUBSTANCE which should be handled by trained staff only.

Storage: -20 °C,-80 °C

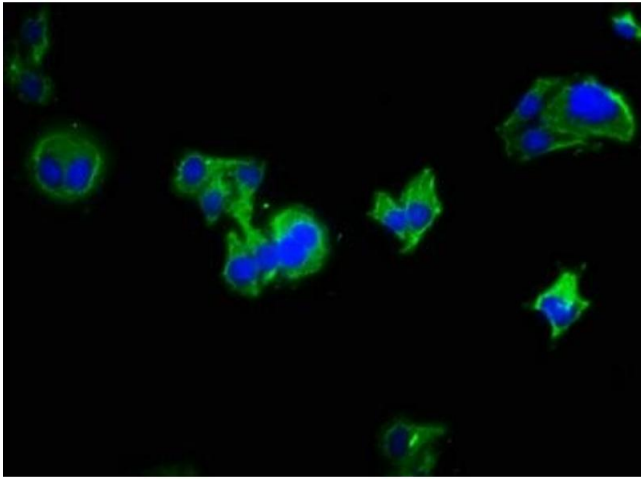
Storage Comment: Upon receipt, store at -20°C or -80°C. Avoid repeated freeze.

Images



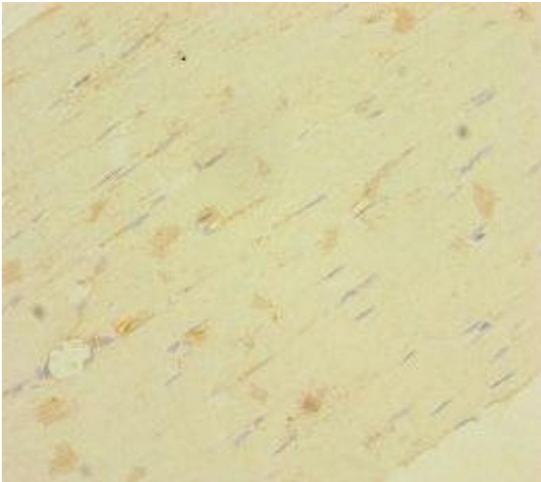
Immunohistochemistry

Image 1. Immunohistochemistry of paraffin-embedded human adrenal gland tissue using ABIN7158146 at dilution of 1:100



Immunofluorescence

Image 2. Immunofluorescence staining of HepG2 cells with ABIN7158146 at 1:333, counter-stained with DAPI. The cells were fixed in 4% formaldehyde, permeabilized using 0.2% Triton X-100 and blocked in 10% normal Goat Serum. The cells were then incubated with the antibody overnight at 4°C. The secondary antibody was Alexa Fluor 488-conjugated AffiniPure Goat Anti-Rabbit IgG(H+L).



Immunohistochemistry

Image 3. Immunohistochemistry of paraffin-embedded human skeletal muscle tissue using ABIN7158146 at dilution of 1:100