



[Go to Product page](#)

Datasheet for ABIN7158162
anti-LRRC31 antibody (AA 1-300)

3 Images

Overview

Quantity:	100 µg
Target:	LRRC31
Binding Specificity:	AA 1-300
Reactivity:	Human
Host:	Rabbit
Clonality:	Polyclonal
Conjugate:	This LRRC31 antibody is un-conjugated
Application:	ELISA, Immunohistochemistry (IHC), Western Blotting (WB)

Product Details

Immunogen:	Recombinant Human Leucine-rich repeat-containing protein 31 protein (1-300AA)
Isotype:	IgG
Cross-Reactivity:	Human, Mouse
Purification:	>95%, Protein G purified

Target Details

Target:	LRRC31
Alternative Name:	LRRC31 (LRRC31 Products)
Background:	LRRC31 antibody, UNQ9367/PRO34156Leucine-rich repeat-containing protein 31 antibody
UniProt:	Q6UY01

Application Details

Application Notes: Recommended dilution: WB:1:500-1:5000, IHC:1:20-1:200,

Restrictions: For Research Use only

Handling

Format: Liquid

Buffer: Preservative: 0.03 % Proclin 300
Constituents: 50 % Glycerol, 0.01M PBS, PH 7.4

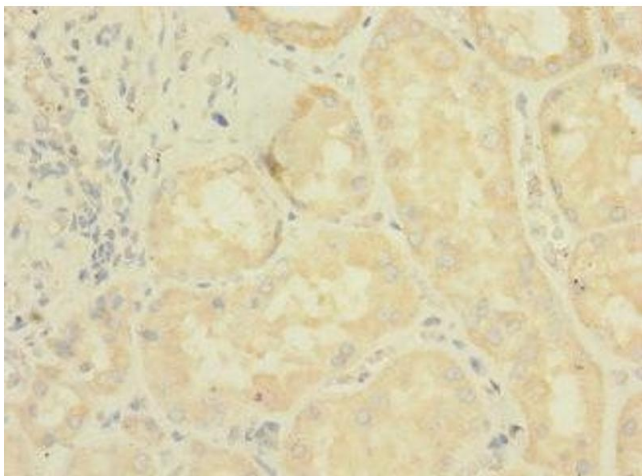
Preservative: ProClin

Precaution of Use: This product contains ProClin: a POISONOUS AND HAZARDOUS SUBSTANCE which should be handled by trained staff only.

Storage: -20 °C,-80 °C

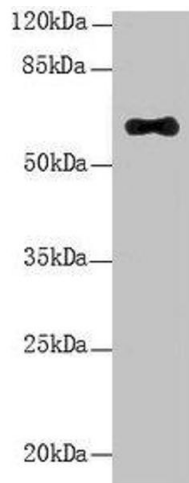
Storage Comment: Upon receipt, store at -20°C or -80°C. Avoid repeated freeze.

Images



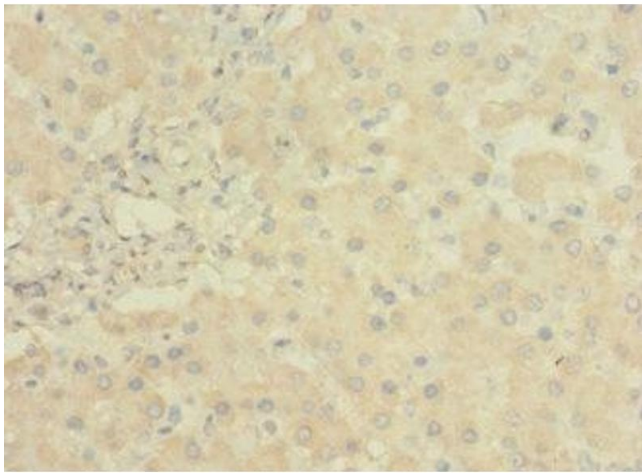
Immunohistochemistry

Image 1. Immunohistochemistry of paraffin-embedded human kidney tissue using ABIN7158162 at dilution of 1:100



Western Blotting

Image 2. Western Blot All lanes: LRRC31 antibody at 5 μ g/mL + Mouse small intestine tissue Secondary Goat polyclonal to rabbit IgG at 1/10000 dilution Predicted band size: 62, 56, 39, 49 kDa Observed band size: 62 kDa



Immunohistochemistry

Image 3. Immunohistochemistry of paraffin-embedded human liver tissue using ABIN7158162 at dilution of 1:100