

Datasheet for ABIN7158170
anti-LRRC3B antibody (AA 34-204)



[Go to Product page](#)

2 Images

Overview

Quantity:	100 µg
Target:	LRRC3B
Binding Specificity:	AA 34-204
Reactivity:	Human
Host:	Rabbit
Clonality:	Polyclonal
Conjugate:	This LRRC3B antibody is un-conjugated
Application:	ELISA, Immunohistochemistry (IHC), Immunofluorescence (IF)

Product Details

Immunogen:	Recombinant Human Leucine-rich repeat-containing protein 3B protein (34-204AA)
Isotype:	IgG
Cross-Reactivity:	Human
Purification:	>95%, Protein G purified

Target Details

Target:	LRRC3B
Alternative Name:	LRRC3B (LRRC3B Products)
Background:	Leucine rich repeat containing 3B antibody, Leucine-rich repeat protein LRP15 antibody, Leucine-rich repeat-containing protein 3B antibody, LRC3B_HUMAN antibody, LRRC3B antibody,

Target Details

MGC102927 antibody

UniProt: [Q96PB8](#)

Application Details

Application Notes: Recommended dilution: IHC:1:20-1:200, IF:1:50-1:200,

Restrictions: For Research Use only

Handling

Format: Liquid

Buffer: Preservative: 0.03 % Proclin 300
Constituents: 50 % Glycerol, 0.01M PBS, PH 7.4

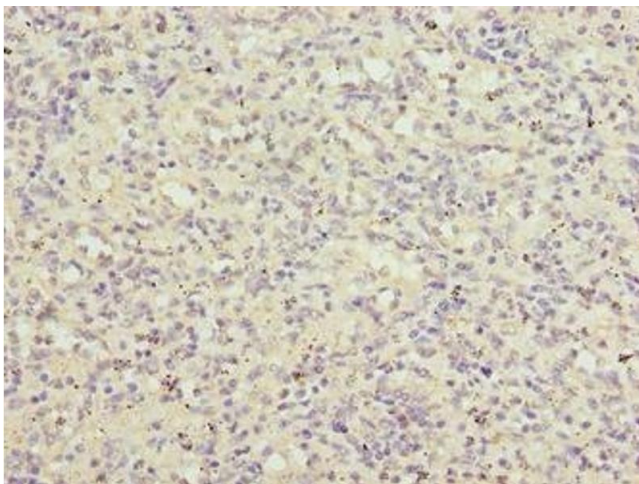
Preservative: ProClin

Precaution of Use: This product contains ProClin: a POISONOUS AND HAZARDOUS SUBSTANCE which should be handled by trained staff only.

Storage: -20 °C,-80 °C

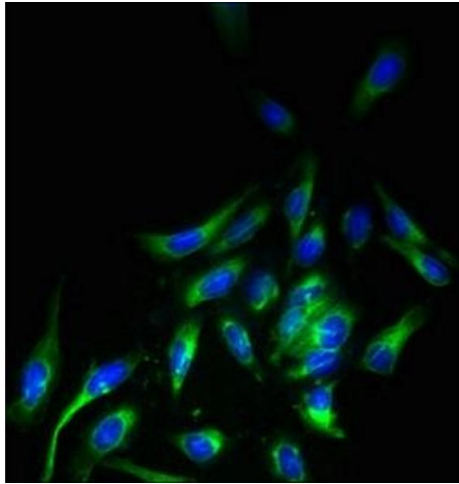
Storage Comment: Upon receipt, store at -20°C or -80°C. Avoid repeated freeze.

Images



Immunohistochemistry

Image 1. Immunohistochemistry of paraffin-embedded human spleen tissue using ABIN7158170 at dilution of 1:100



Immunofluorescence

Image 2. Immunofluorescent analysis of HeLa cells using ABIN7158170 at dilution of 1:100 and Alexa Fluor 488-conjugated AffiniPure Goat Anti-Rabbit IgG(H+L)