



[Go to Product page](#)

Datasheet for ABIN7158174  
**anti-LRRC3C antibody (AA 42-224)**

1 Image

Overview

Quantity:	100 µL
Target:	LRRC3C
Binding Specificity:	AA 42-224
Reactivity:	Human
Host:	Rabbit
Clonality:	Polyclonal
Conjugate:	This LRRC3C antibody is un-conjugated
Application:	ELISA, Immunohistochemistry (IHC)

Product Details

Immunogen:	Recombinant Human Leucine-rich repeat-containing protein 3C protein (42-224AA)
Isotype:	IgG
Cross-Reactivity:	Human
Purification:	Antigen Affinity Purified

Target Details

Target:	LRRC3C
Alternative Name:	LRRC3C ( <a href="#">LRRC3C Products</a> )
Background:	Background: cytoplasm, protein kinase inhibitor activity, cytokine-mediated signaling pathway, negative regulation of JAK-STAT cascade, negative regulation of protein kinase activity

## Target Details

Aliases: LRRC3C antibody, Leucine-rich repeat-containing protein 3C antibody

UniProt: [A6NJW4](#)

## Application Details

Application Notes: Recommended dilution: IHC:1:20-1:200,

Restrictions: For Research Use only

## Handling

Format: Liquid

Buffer: Preservative: 0.03 % Proclin 300  
Constituents: 50 % Glycerol, 0.01M PBS, pH 7.4

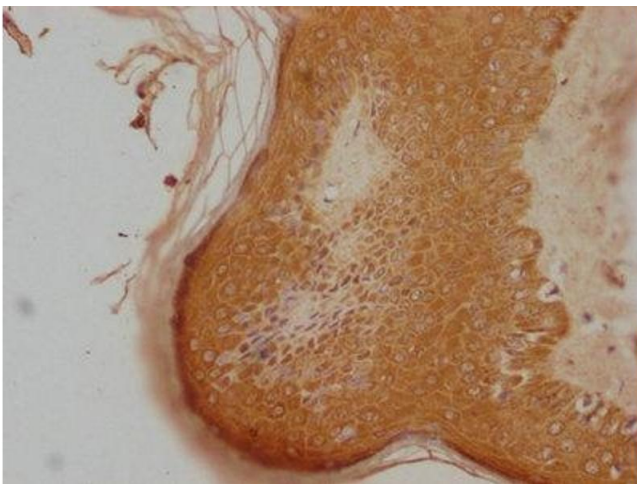
Preservative: ProClin

Precaution of Use: This product contains ProClin: a POISONOUS AND HAZARDOUS SUBSTANCE which should be handled by trained staff only.

Storage: -20 °C,-80 °C

Storage Comment: Upon receipt, store at -20°C or -80°C. Avoid repeated freeze.

## Images



### Immunohistochemistry

**Image 1.** IHC image of ABIN7158174 diluted at 1:100 and staining in paraffin-embedded human skin tissue performed on a Leica Bond™ system. After dewaxing and hydration, antigen retrieval was mediated by high pressure in a citrate buffer (pH 6.0). Section was blocked with 10 % normal goat serum 30 min at RT. Then primary antibody (1 % BSA) was incubated at 4 °C overnight. The primary is detected by a biotinylated secondary antibody and visualized using an HRP conjugated SP system.