



Datasheet for ABIN7158202
anti-LRIT1 antibody (AA 251-456)



[Go to Product page](#)

1 Image

Overview

Quantity:	100 µL
Target:	LRIT1
Binding Specificity:	AA 251-456
Reactivity:	Human
Host:	Rabbit
Clonality:	Polyclonal
Application:	Western Blotting (WB), ELISA

Product Details

Immunogen:	Recombinant Human Leucine-rich repeat, immunoglobulin-like domain and transmembrane domain-containing protein 1 protein (251-456AA)
Isotype:	IgG
Cross-Reactivity:	Human
Purification:	>95%, Protein G purified

Target Details

Target:	LRIT1
Alternative Name:	LRIT1 (LRIT1 Products)
Background:	Background: Possible role in phototransduction. Aliases: LRIT1 antibody, LRRC21 antibody, PAL antibody, Leucine-rich repeat antibody, immunoglobulin-like domain and transmembrane domain-containing protein 1 antibody,

Target Details

Leucine-rich repeat-containing protein 21 antibody, Photoreceptor-associated LRR superfamily protein antibody, Retina-specific protein PAL antibody

UniProt: [Q9P2V4](#)

Application Details

Application Notes: Recommended dilution: WB:1:1000-1:5000,

Restrictions: For Research Use only

Handling

Format: Liquid

Buffer: Preservative: 0.03 % Proclin 300
Constituents: 50 % Glycerol, 0.01M PBS, pH 7.4

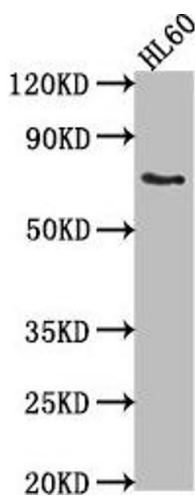
Preservative: ProClin

Precaution of Use: This product contains ProClin: a POISONOUS AND HAZARDOUS SUBSTANCE which should be handled by trained staff only.

Storage: -20 °C,-80 °C

Storage Comment: Upon receipt, store at -20°C or -80°C. Avoid repeated freeze.

Images



Western Blotting

Image 1. Western Blot Positive WB detected in: HL60 whole cell lysate All lanes: LRIT1 antibody at 1:2000 Secondary Goat polyclonal to rabbit IgG at 1/50000 dilution Predicted band size: 69 kDa Observed band size: 69 kDa