

Datasheet for ABIN7158226  
**anti-LIFR antibody (AA 915-1086)**[Go to Product page](#)

## 4 Images

## Overview

Quantity:	100 µg
Target:	LIFR
Binding Specificity:	AA 915-1086
Reactivity:	Human
Host:	Rabbit
Clonality:	Polyclonal
Conjugate:	This LIFR antibody is un-conjugated
Application:	Western Blotting (WB), Immunohistochemistry (IHC), ELISA, Immunofluorescence (IF)

## Product Details

Immunogen:	Recombinant Human Leukemia inhibitory factor receptor protein (915-1086AA)
Isotype:	IgG
Cross-Reactivity:	Human, Rat
Purification:	>95%, Protein G purified

## Target Details

Target:	LIFR
Alternative Name:	LIFR ( <a href="#">LIFR Products</a> )
Background:	Background: Signal-transducing molecule. May have a common pathway with IL6ST. The soluble form inhibits the biological activity of LIF by blocking its binding to receptors on target

## Target Details

cells.

Aliases: CD118 antibody, CD118 antigen antibody, FLJ98106 antibody, FLJ99923 antibody, Leukemia inhibitory factor receptor alpha antibody, Leukemia inhibitory factor receptor antibody, LIF R antibody, LIF receptor antibody, LIF-R antibody, Lifr antibody, LIFR\_HUMAN antibody, SJS2 antibody, STWS antibody, SWS antibody

UniProt: [P42702](#)

Pathways: [JAK-STAT Signaling](#), [Growth Factor Binding](#)

## Application Details

Application Notes: Recommended dilution: WB:1:500-1:5000, IHC:1:500-1:1000, IF:1:200-1:500,

Restrictions: For Research Use only

## Handling

Format: Liquid

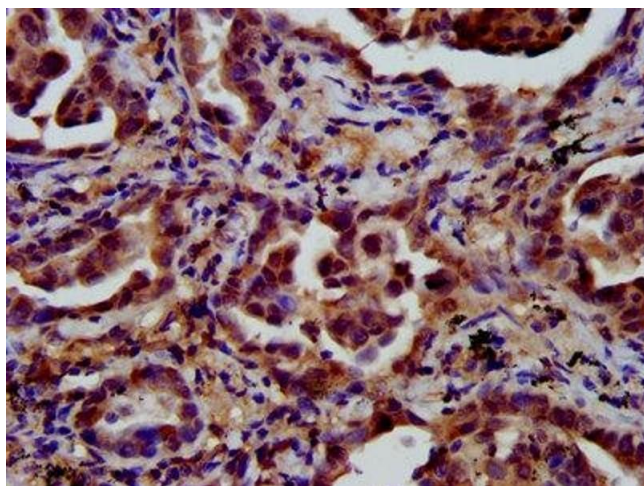
Buffer: Preservative: 0.03 % Proclin 300  
Constituents: 50 % Glycerol, 0.01M PBS, pH 7.4

Preservative: ProClin

Precaution of Use: This product contains ProClin: a POISONOUS AND HAZARDOUS SUBSTANCE which should be handled by trained staff only.

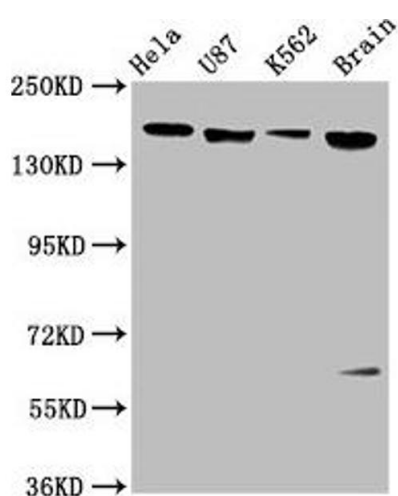
Storage: -20 °C, -80 °C

Storage Comment: Upon receipt, store at -20°C or -80°C. Avoid repeated freeze.



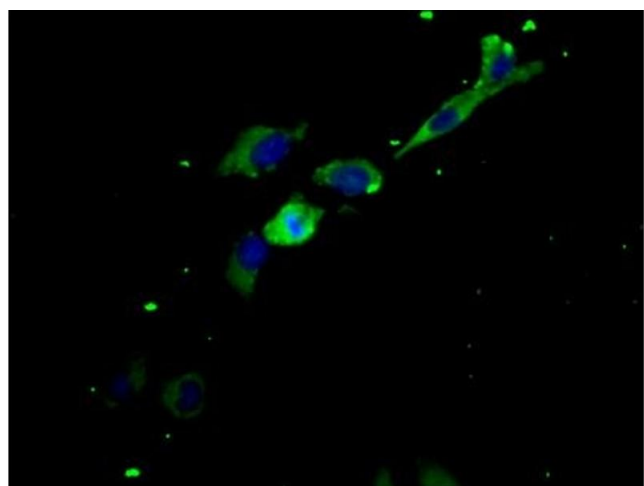
### Immunohistochemistry

**Image 1.** IHC image of ABIN7158226 diluted at 1:600 and staining in paraffin-embedded human lung cancer performed on a Leica Bond™ system. After dewaxing and hydration, antigen retrieval was mediated by high pressure in a citrate buffer (pH 6.0). Section was blocked with 10% normal goat serum 30min at RT. Then primary antibody (1% BSA) was incubated at 4°C overnight. The primary is detected by a biotinylated secondary antibody and visualized using an HRP conjugated SP system.



### Western Blotting

**Image 2.** Western Blot Positive WB detected in: HeLa whole cell lysate, U87 whole cell lysate, K562 whole cell lysate, Rat brain tissue All lanes: LIFR antibody at 3.4 µg/mL Secondary Goat polyclonal to rabbit IgG at 1/50000 dilution Predicted band size: 124 kDa Observed band size: 190 kDa



### Immunofluorescence

**Image 3.** Immunofluorescence staining of HeLa cells with ABIN7158226 at 1:200, counter-stained with DAPI. The cells were fixed in 4% formaldehyde, permeabilized using 0.2% Triton X-100 and blocked in 10% normal Goat Serum. The cells were then incubated with the antibody overnight at 4°C. The secondary antibody was Alexa Fluor 488-conjugated AffiniPure Goat Anti-Rabbit IgG(H+L).

Please check the [product details page](#) for more images. Overall 4 images are available for ABIN7158226.