

Datasheet for ABIN7158230
anti-DLEU1 antibody (AA 1-78)



[Go to Product page](#)

2 Images

Overview

Quantity:	100 µg
Target:	DLEU1
Binding Specificity:	AA 1-78
Reactivity:	Human
Host:	Rabbit
Clonality:	Polyclonal
Conjugate:	This DLEU1 antibody is un-conjugated
Application:	ELISA, Immunohistochemistry (IHC), Immunofluorescence (IF)

Product Details

Immunogen:	Recombinant Human Leukemia-associated protein 1 protein (1-78AA)
Isotype:	IgG
Cross-Reactivity:	Human
Purification:	>95%, Protein G purified

Target Details

Target:	DLEU1
Alternative Name:	DLEU1 (DLEU1 Products)
Background:	Background: May act as a tumor suppressor. Aliases: DLEU1 antibody, LEU1 antibody, XTP6 antibody, Leukemia-associated protein 1

Target Details

antibody, Deleted in lymphocytic leukemia 1 antibody, HBV X-transactivated gene 6 protein antibody, HBV XAg-transactivated protein 6 antibody

UniProt: [O43261](#)

Application Details

Application Notes: Recommended dilution: IHC:1:20-1:200, IF:1:50-1:200,

Restrictions: For Research Use only

Handling

Format: Liquid

Buffer: Preservative: 0.03 % Proclin 300
Constituents: 50 % Glycerol, 0.01M PBS, PH 7.4

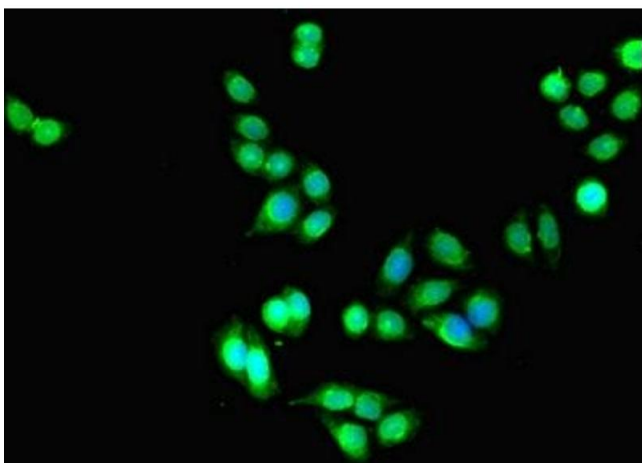
Preservative: ProClin

Precaution of Use: This product contains ProClin: a POISONOUS AND HAZARDOUS SUBSTANCE which should be handled by trained staff only.

Storage: -20 °C,-80 °C

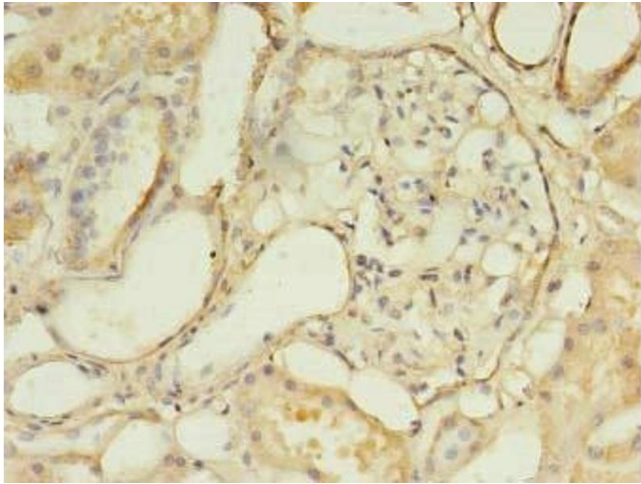
Storage Comment: Upon receipt, store at -20°C or -80°C. Avoid repeated freeze.

Images



Immunofluorescence

Image 1. Immunofluorescent analysis of PC-3 cells using ABIN7158230 at dilution of 1:100 and Alexa Fluor 488-conjugated AffiniPure Goat Anti-Rabbit IgG(H+L)



Immunohistochemistry

Image 2. Immunohistochemistry of paraffin-embedded human kidney tissue using ABIN7158230 at dilution of 1:100