

Datasheet for ABIN7158243  
**anti-LECT2 antibody (AA 24-151)**[Go to Product page](#)

## 1 Image

## Overview

Quantity:	100 µg
Target:	LECT2
Binding Specificity:	AA 24-151
Reactivity:	Human
Host:	Rabbit
Clonality:	Polyclonal
Conjugate:	This LECT2 antibody is un-conjugated
Application:	Immunohistochemistry (IHC), ELISA

## Product Details

Immunogen:	Recombinant Human Leukocyte cell-derived chemotaxin-2 protein (24-151AA)
Isotype:	IgG
Cross-Reactivity:	Human
Purification:	>95%, Protein G purified

## Target Details

Target:	LECT2
Alternative Name:	LECT2 ( <a href="#">LECT2 Products</a> )
Background:	Background: Has a neutrophil chemotactic activity. Also a positive regulator of chondrocyte proliferation (PubMed:9524238). Does not show metalloendopeptidase activity

## Target Details

(PubMed:27334921).

Aliases: chm II antibody, chm2 antibody, Chondromodulin II antibody, hLECT2 antibody, LECT 2 antibody, LECT-2 antibody, LECT2 antibody, LECT2\_HUMAN antibody, Leukocyte cell derived chemotaxin 2 antibody, Leukocyte cell-derived chemotaxin-2 antibody, MGC126628 antibody

UniProt: [014960](#)

## Application Details

Application Notes: Recommended dilution: IHC:1:200-1:500,

Restrictions: For Research Use only

## Handling

Format: Liquid

Buffer: Preservative: 0.03 % Proclin 300  
Constituents: 50 % Glycerol, 0.01M PBS, pH 7.4

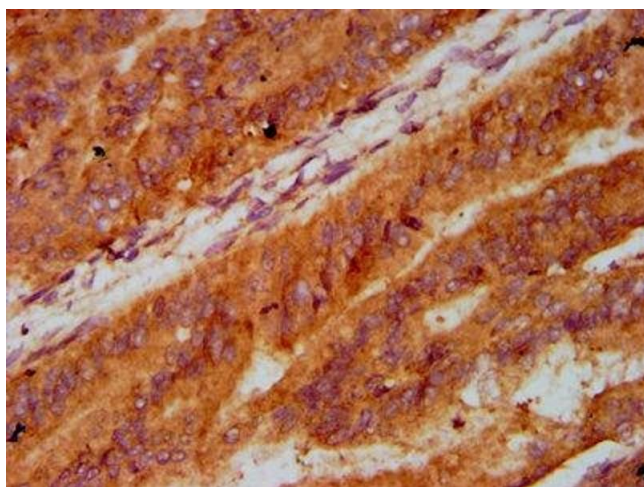
Preservative: ProClin

Precaution of Use: This product contains ProClin: a POISONOUS AND HAZARDOUS SUBSTANCE which should be handled by trained staff only.

Storage: -20 °C,-80 °C

Storage Comment: Upon receipt, store at -20°C or -80°C. Avoid repeated freeze.

## Images



### Immunohistochemistry

**Image 1.** IHC image of ABIN7158243 diluted at 1:400 and staining in paraffin-embedded human endometrial cancer performed on a Leica Bond™ system. After dewaxing and hydration, antigen retrieval was mediated by high pressure in a citrate buffer (pH 6.0). Section was blocked with 10% normal goat serum 30min at RT. Then primary antibody (1% BSA) was incubated at 4°C overnight. The primary is detected by a biotinylated secondary antibody and visualized using an HRP conjugated SP system.