

Datasheet for ABIN7158247
anti-SERPINB1 antibody (AA 1-379)[Go to Product page](#)

4 Images

Overview

Quantity:	100 µg
Target:	SERPINB1
Binding Specificity:	AA 1-379
Reactivity:	Human
Host:	Rabbit
Clonality:	Polyclonal
Conjugate:	This SERPINB1 antibody is un-conjugated
Application:	Western Blotting (WB), ELISA, Immunohistochemistry (IHC), Immunoprecipitation (IP), Immunofluorescence (IF)

Product Details

Immunogen:	Recombinant Human Leukocyte elastase inhibitor protein (1-379AA)
Isotype:	IgG
Cross-Reactivity:	Human
Purification:	>95%, Protein G purified

Target Details

Target:	SERPINB1
Alternative Name:	SERPINB1 (SERPINB1 Products)
Background:	Background: Regulates the activity of the neutrophil proteases elastase, cathepsin G,

Target Details

proteinase-3, chymase, chymotrypsin, and kallikrein-3. Also functions as a potent intracellular inhibitor of granzyme H.

Aliases: Anti elastase antibody, EI antibody, ELANH2 antibody, Epididymis luminal protein 57 antibody, HEL57 antibody, ILEU_HUMAN antibody, LEI antibody, Leukocyte elastase inhibitor antibody, M/NEI antibody, MNEI antibody, Monocyte/neutrophil elastase inhibitor antibody, Peptidase inhibitor 2 antibody, Pi-2 antibody, PI2 antibody, Serine (or cysteine) proteinase inhibitor clade B (ovalbumin) member 1 antibody, Serpin B1 antibody, Serpin peptidase inhibitor clade B (ovalbumin) member 1 antibody, serpinb1 antibody

UniProt: [P30740](#)

Application Details

Application Notes: Recommended dilution: WB:1:500-1:5000, IHC:1:200-1:500, IF:1:50-1:200, IP:1:200-1:2000,

Restrictions: For Research Use only

Handling

Format: Liquid

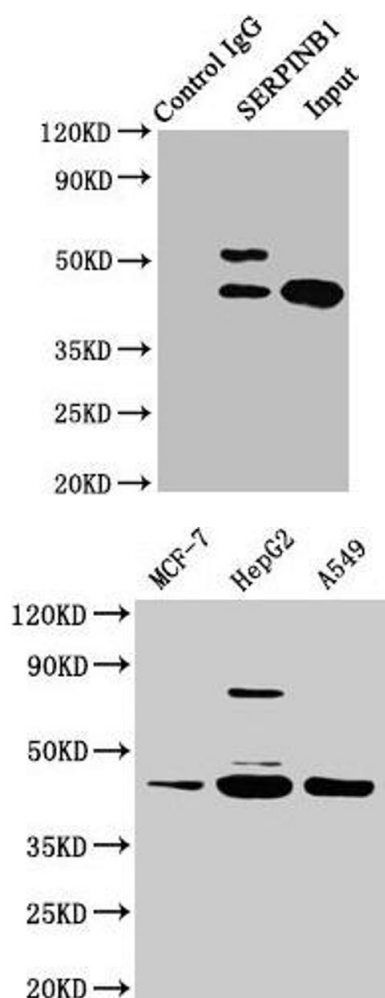
Buffer: Preservative: 0.03 % Proclin 300
Constituents: 50 % Glycerol, 0.01M PBS, PH 7.4

Preservative: ProClin

Precaution of Use: This product contains ProClin: a POISONOUS AND HAZARDOUS SUBSTANCE which should be handled by trained staff only.

Storage: -20 °C,-80 °C

Storage Comment: Upon receipt, store at -20°C or -80°C. Avoid repeated freeze.

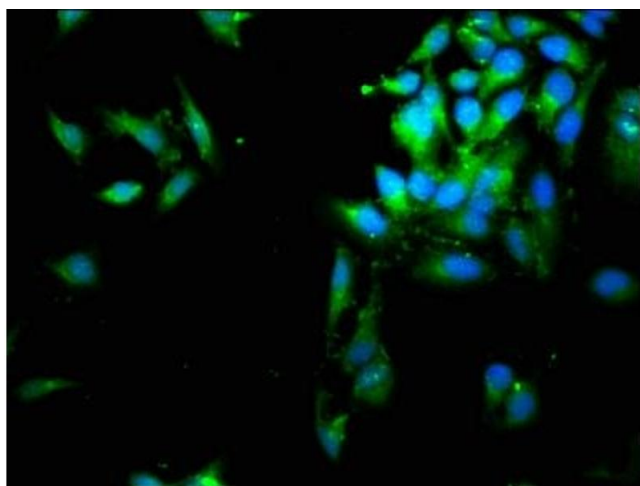


Western Blotting

Image 1. Immunoprecipitating SERPINB1 in HepG2 whole cell lysate Lane 1: Rabbit control IgG instead of ABIN7158247 in HepG2 whole cell lysate. For western blotting, a HRP-conjugated Protein G antibody was used as the secondary antibody (1/2000) Lane 2: ABIN7158247 (8 μ g) + HepG2 whole cell lysate (500 μ g) Lane 3: HepG2 whole cell lysate (20 μ g)

Western Blotting

Image 2. Western Blot Positive WB detected in: MCF-7 whole cell lysate, HepG2 whole cell lysate, A549 whole cell lysate All lanes: SERPINB1 antibody at 2 μ g/mL Secondary Goat polyclonal to rabbit IgG at 1/50000 dilution Predicted band size: 43, 27 kDa Observed band size: 43 kDa



Immunofluorescence

Image 3. Immunofluorescence staining of HeLa cells with ABIN7158247 at 1:66, counter-stained with DAPI. The cells were fixed in 4% formaldehyde, permeabilized using 0.2% Triton X-100 and blocked in 10% normal Goat Serum. The cells were then incubated with the antibody overnight at 4°C. The secondary antibody was Alexa Fluor 488-conjugated AffiniPure Goat Anti-Rabbit IgG(H+L).

Please check the [product details page](#) for more images. Overall 4 images are available for ABIN7158247.