

Datasheet for ABIN7158256
anti-LILRA3 antibody (AA 222-313)[Go to Product page](#)

2 Images

Overview

Quantity:	100 µg
Target:	LILRA3
Binding Specificity:	AA 222-313
Reactivity:	Human
Host:	Rabbit
Clonality:	Polyclonal
Conjugate:	This LILRA3 antibody is un-conjugated
Application:	Western Blotting (WB), ELISA, Immunohistochemistry (IHC)

Product Details

Immunogen:	Recombinant Human Leukocyte immunoglobulin-like receptor subfamily A member 3 protein (222-313AA)
Isotype:	IgG
Cross-Reactivity:	Human
Purification:	>95%, Protein G purified

Target Details

Target:	LILRA3
Alternative Name:	LILRA3 (LILRA3 Products)
Background:	Background: Acts as soluble receptor for class I MHC antigens. Binds both classical and non-

Target Details

classical HLA class I molecules but with reduced affinities compared to LILRB1 or LILRB2.

Binds with high affinity to the surface of monocytes, leading to abolish LPS-induced TNF-alpha production by monocytes.

Aliases: CD 85E antibody, CD85 antigen-like family member E antibody, CD85e antibody, CD85e antigen antibody, e3 antibody, HM 31 antibody, HM 43 antibody, HM31 antibody, HM43 antibody, ILT 6 antibody, ILT-6 antibody, ILT6 antibody, Immunoglobulin like transcript 6 antibody, Immunoglobulin-like transcript 6 antibody, Leucocyte immunoglobulin like receptor antibody, Leukocyte immunoglobulin like receptor 4 antibody, Leukocyte immunoglobulin like receptor A3 antibody, Leukocyte immunoglobulin like receptor subfamily A (without TM domain) member 3 antibody, Leukocyte immunoglobulin like receptor subfamily A member 3 antibody, Leukocyte immunoglobulin-like receptor 4 antibody, Leukocyte immunoglobulin-like receptor subfamily A member 3 antibody, LILRA 3 antibody, LILRA3 antibody, LIR 4 antibody, LIR-4 antibody, LIR4 antibody, LIRA3_HUMAN antibody, Monocyte inhibitory receptor HM43/HM31 antibody

UniProt: [Q8N6C8](#)

Application Details

Application Notes: Recommended dilution: WB:1:500-1:5000, IHC:1:200-1:500,

Restrictions: For Research Use only

Handling

Format: Liquid

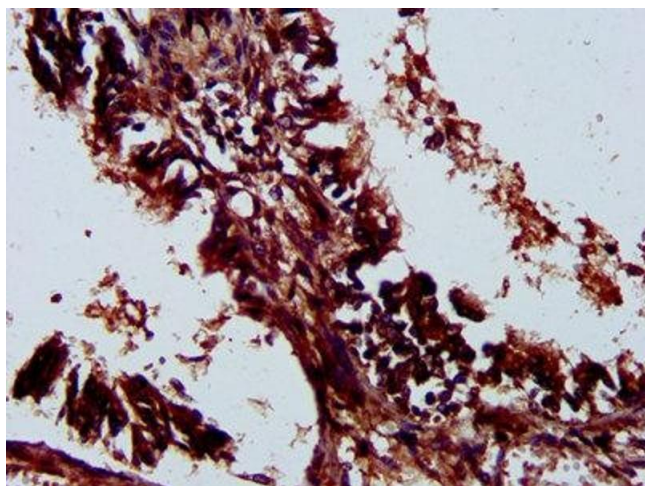
Buffer: Preservative: 0.03 % Proclin 300
Constituents: 50 % Glycerol, 0.01M PBS, pH 7.4

Preservative: ProClin

Precaution of Use: This product contains ProClin: a POISONOUS AND HAZARDOUS SUBSTANCE which should be handled by trained staff only.

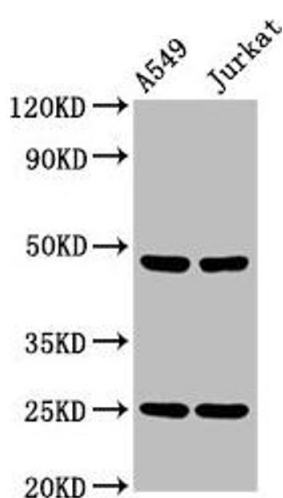
Storage: -20 °C,-80 °C

Storage Comment: Upon receipt, store at -20°C or -80°C. Avoid repeated freeze.



Immunohistochemistry

Image 1. IHC image of ABIN7158256 diluted at 1:300 and staining in paraffin-embedded human lung tissue performed on a Leica Bond™ system. After dewaxing and hydration, antigen retrieval was mediated by high pressure in a citrate buffer (pH 6.0). Section was blocked with 10% normal goat serum 30min at RT. Then primary antibody (1% BSA) was incubated at 4°C overnight. The primary is detected by a biotinylated secondary antibody and visualized using an HRP conjugated SP system.



Western Blotting

Image 2. Western Blot Positive WB detected in: A549 whole cell lysate, Jurkat whole cell lysate All lanes: LILRA3 antibody at 4.2 µg/mL Secondary Goat polyclonal to rabbit IgG at 1/50000 dilution Predicted band size: 48, 41, 50 kDa Observed band size: 48 kDa