

Datasheet for ABIN7158264
anti-LILRB1 antibody (AA 483-650)

3 Images

[Go to Product page](#)

Overview

Quantity:	100 µg
Target:	LILRB1
Binding Specificity:	AA 483-650
Reactivity:	Human
Host:	Rabbit
Clonality:	Polyclonal
Application:	Western Blotting (WB), ELISA, Immunohistochemistry (IHC), Immunofluorescence (IF)

Product Details

Immunogen:	Recombinant Human Leukocyte immunoglobulin-like receptor subfamily B member 1 protein (483-650AA)
Isotype:	IgG
Cross-Reactivity:	Human, Rat
Purification:	>95%, Protein G purified

Target Details

Target:	LILRB1
Alternative Name:	LILRB1 (LILRB1 Products)
Background:	Background: Receptor for class I MHC antigens. Recognizes a broad spectrum of HLA-A, HLA-B, HLA-C and HLA-G alleles. Receptor for H301/UL18, a human cytomegalovirus class I MHC homolog. Ligand binding results in inhibitory signals and down-regulation of the immune

Target Details

response. Engagement of LILRB1 present on natural killer cells or T-cells by class I MHC molecules protects the target cells from lysis. Interaction with HLA-B or HLA-E leads to inhibition of the signal triggered by FCER1A and inhibits serotonin release. Inhibits FCGR1A-mediated phosphorylation of cellular proteins and mobilization of intracellular calcium ions.

Aliases: CD85 antibody, CD85 antigen antibody, CD85 antigen like family member J antibody, CD85 antigen-like family member J antibody, CD85j antibody, CD85j antigen antibody, Ig like transcript 2 antibody, ILT 2 antibody, ILT-2 antibody, ILT2 antibody, immunoglobulin like transcript 2 antibody, Immunoglobulin-like transcript 2 antibody, leukocyte Ig like receptor 1 antibody, Leukocyte immunoglobulin like receptor 1 antibody, leukocyte immunoglobulin like receptor subfamily B member 1 antibody, Leukocyte immunoglobulin like receptor subfamily B member 1 precursor antibody, leukocyte immunoglobulin like receptor subfamily B member 1 soluble isoform antibody, leukocyte immunoglobulin like receptor, subfamily B, member 1 antibody, Leukocyte immunoglobulin-like receptor 1 antibody, Leukocyte immunoglobulin-like receptor subfamily B member 1 antibody, leukocyte immunoglobulin-like receptor subfamily B member 1 soluble isoform antibody, leukocyte immunoglobulin-like receptor, subfamily B (with TM and ITIM domains), member 1 antibody, LILRB1 antibody, LIR 1 antibody, LIR-1 antibody, LIR1 antibody, LIRB1_HUMAN antibody, MIR 7 antibody, MIR-7 antibody, MIR7 antibody, Monocyte/macrophage immunoglobulin like receptor 7 antibody, Monocyte/macrophage immunoglobulin-like receptor 7 antibody, PIR B antibody, PIRB antibody

UniProt: [Q8NHL6](#)

Pathways: [Cellular Response to Molecule of Bacterial Origin](#), [Regulation of Leukocyte Mediated Immunity](#), [Positive Regulation of Immune Effector Process](#), [Production of Molecular Mediator of Immune Response](#)

Application Details

Application Notes: Recommended dilution: WB:1:500-1:5000, IHC:1:200-1:500, IF:1:50-1:200,

Restrictions: For Research Use only

Handling

Format: Liquid

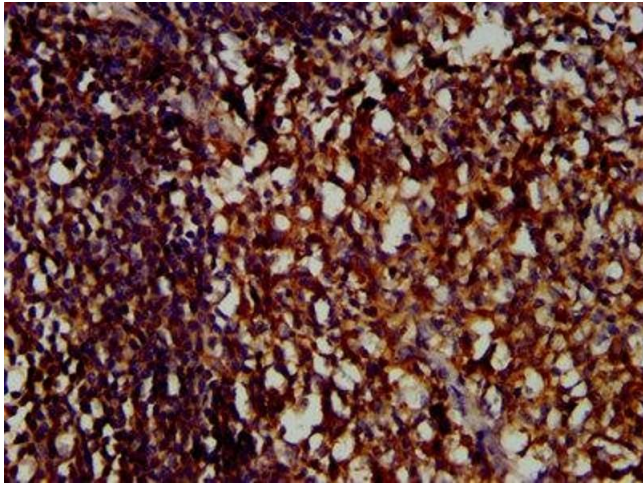
Buffer: Preservative: 0.03 % Proclin 300
Constituents: 50 % Glycerol, 0.01M PBS, pH 7.4

Preservative: ProClin

Handling

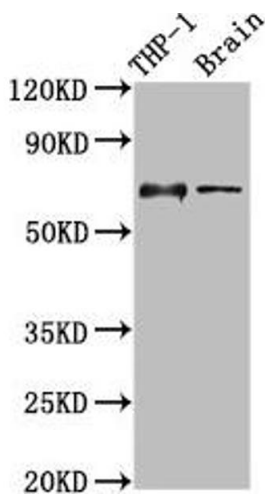
Precaution of Use:	This product contains ProClin: a POISONOUS AND HAZARDOUS SUBSTANCE which should be handled by trained staff only.
Storage:	-20 °C,-80 °C
Storage Comment:	Upon receipt, store at -20°C or -80°C. Avoid repeated freeze.

Images



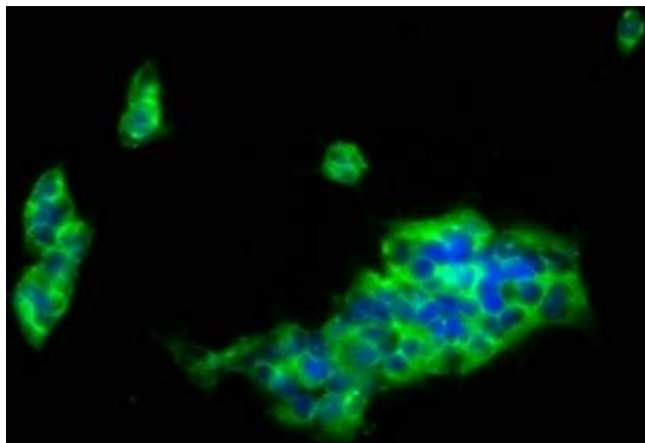
Immunohistochemistry

Image 1. IHC image of ABIN7158264 diluted at 1:400 and staining in paraffin-embedded human tonsil tissue performed on a Leica Bond™ system. After dewaxing and hydration, antigen retrieval was mediated by high pressure in a citrate buffer (pH 6.0). Section was blocked with 10% normal goat serum 30min at RT. Then primary antibody (1% BSA) was incubated at 4°C overnight. The primary is detected by a biotinylated secondary antibody and visualized using an HRP conjugated SP system.



Western Blotting

Image 2. Western Blot Positive WB detected in: THP-1 whole cell lysate, Rat brain tissue All lanes: LILRB1 antibody at 3.5 µg/mL Secondary Goat polyclonal to rabbit IgG at 1/50000 dilution Predicted band size: 71, 72, 50 kDa Observed band size: 71 kDa



Immunofluorescence

Image 3. Immunofluorescence staining of 293 cells with ABIN7158264 at 1:133, counter-stained with DAPI. The cells were fixed in 4% formaldehyde, permeabilized using 0.2% Triton X-100 and blocked in 10% normal Goat Serum. The cells were then incubated with the antibody overnight at 4°C. The secondary antibody was Alexa Fluor 488-conjugated AffiniPure Goat Anti-Rabbit IgG(H+L).