

Datasheet for ABIN7158268
anti-LILRB2 antibody (AA 406-563)[Go to Product page](#)

2 Images

Overview

Quantity:	100 µL
Target:	LILRB2
Binding Specificity:	AA 406-563
Reactivity:	Human
Host:	Rabbit
Clonality:	Polyclonal
Conjugate:	This LILRB2 antibody is un-conjugated
Application:	Western Blotting (WB), ELISA, Immunofluorescence (IF)

Product Details

Immunogen:	Recombinant Human Leukocyte immunoglobulin-like receptor subfamily B member 2 protein (406-563AA)
Isotype:	IgG
Cross-Reactivity:	Human
Purification:	>95%, Protein G purified

Target Details

Target:	LILRB2
Alternative Name:	LILRB2 (LILRB2 Products)
Background:	Background: Receptor for class I MHC antigens. Recognizes a broad spectrum of HLA-A, HLA-

Target Details

B, HLA-C and HLA-G alleles. Involved in the down-regulation of the immune response and the development of tolerance. Competes with CD8A for binding to class I MHC antigens. Inhibits FCGR1A-mediated phosphorylation of cellular proteins and mobilization of intracellular calcium ions.

Aliases: CD85 antigen-like family member D antibody, CD85d antibody, CD85d antigen antibody, ILT 4 antibody, ILT-4 antibody, ILT4 antibody, Immunoglobulin like transcript 4 antibody, Immunoglobulin-like transcript 4 antibody, Leukocyte immunoglobulin like receptor 2 antibody, Leukocyte immunoglobulin like receptor subfamily B member 2 antibody, Leukocyte immunoglobulin-like receptor 2 antibody, Leukocyte immunoglobulin-like receptor subfamily B member 2 antibody, Leukocyte immunoglobulin-like receptor, subfamily B (with TM and ITIM domains), member 2 antibody, LILRA6 antibody, LILRB2 antibody, LIR 2 antibody, LIR-2 antibody, LIR2 antibody, LIRb antibody, LIRB2_HUMAN antibody, MIR 10 antibody, MIR-10 antibody, MIR10 antibody, Monocyte/macrophage immunoglobulin like receptor 10 antibody, Monocyte/macrophage immunoglobulin-like receptor 10 antibody

UniProt: [Q8N423](#)

Pathways: [Cellular Response to Molecule of Bacterial Origin](#)

Application Details

Application Notes: Recommended dilution: WB:1:500-1:5000, IF:1:50-1:200,

Restrictions: For Research Use only

Handling

Format: Liquid

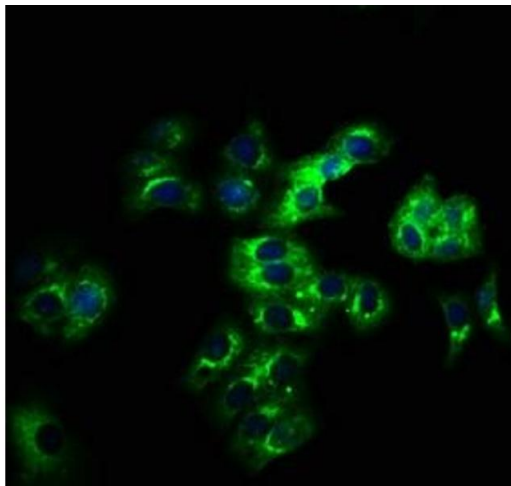
Buffer: Preservative: 0.03 % Proclin 300
Constituents: 50 % Glycerol, 0.01M PBS, pH 7.4

Preservative: ProClin

Precaution of Use: This product contains ProClin: a POISONOUS AND HAZARDOUS SUBSTANCE which should be handled by trained staff only.

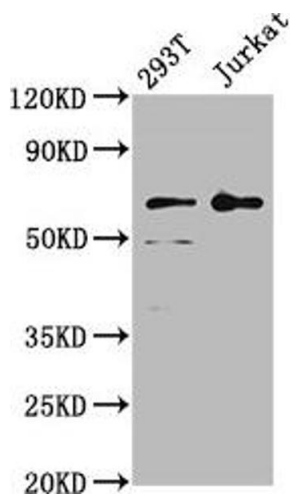
Storage: -20 °C, -80 °C

Storage Comment: Upon receipt, store at -20°C or -80°C. Avoid repeated freeze.



Immunofluorescence

Image 1. Immunofluorescence staining of HepG2 cells with ABIN7158268 at 1:166, counter-stained with DAPI. The cells were fixed in 4% formaldehyde, permeabilized using 0.2% Triton X-100 and blocked in 10% normal Goat Serum. The cells were then incubated with the antibody overnight at 4°C. The secondary antibody was Alexa Fluor 488-conjugated AffiniPure Goat Anti-Rabbit IgG(H+L).



Western Blotting

Image 2. Western Blot Positive WB detected in: 293T whole cell lysate, Jurkat whole cell lysate All lanes: LILRB2 antibody at 4 µg/mL Secondary Goat polyclonal to rabbit IgG at 1/50000 dilution Predicted band size: 66, 65, 56, 52 kDa Observed band size: 66 kDa