

Datasheet for ABIN7158276  
**anti-LILRB4 antibody (AA 22-259)**[Go to Product page](#)

## 1 Image

## Overview

Quantity:	100 µL
Target:	LILRB4
Binding Specificity:	AA 22-259
Reactivity:	Human
Host:	Rabbit
Clonality:	Polyclonal
Conjugate:	This LILRB4 antibody is un-conjugated
Application:	Western Blotting (WB), ELISA

## Product Details

Immunogen:	Recombinant Human Leukocyte immunoglobulin-like receptor subfamily B member 4 protein (22-259AA)
Isotype:	IgG
Cross-Reactivity:	Human
Purification:	Antigen Affinity Purified

## Target Details

Target:	LILRB4
Alternative Name:	LILRB4 ( <a href="#">LILRB4 Products</a> )
Background:	Background: Receptor for class I MHC antigens. Recognizes a broad spectrum of HLA-A, HLA-

## Target Details

B, HLA-C and HLA-G alleles. Involved in the down-regulation of the immune response and the development of tolerance, e.g. towards transplants. Interferes with TNFRSF5-signaling and NF-kappa-B up-regulation. Inhibits receptor-mediated phosphorylation of cellular proteins and mobilization of intracellular calcium ions.

Aliases: CD85 antigen-like family member K antibody, CD85k antibody, HM18 antibody, ILT-3 antibody, ILT3 antibody, Immunoglobulin-like transcript 3 antibody, Leukocyte immunoglobulin like receptor subfamily B (with TM and ITIM domains) member 4 antibody, Leukocyte immunoglobulin-like receptor 5 antibody, Leukocyte immunoglobulin-like receptor subfamily B member 4 antibody, LILRB4 antibody, LILRB5 antibody, LIR-5 antibody, LIR5 antibody, LIRB4\_HUMAN antibody, Monocyte inhibitory receptor HM18 antibody

UniProt: [Q8NHJ6](#)

## Application Details

Application Notes: Recommended dilution: WB:1:1000-1:5000,

Restrictions: For Research Use only

## Handling

Format: Liquid

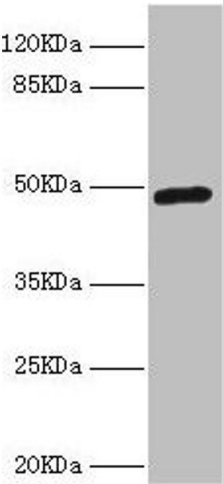
Buffer: PBS with 0.02 % sodium azide, 50 % glycerol, pH 7.3.

Preservative: Sodium azide

Precaution of Use: This product contains Sodium azide: a POISONOUS AND HAZARDOUS SUBSTANCE which should be handled by trained staff only.

Storage: -20 °C, -80 °C

Storage Comment: Upon receipt, store at -20°C or -80°C. Avoid repeated freeze.



Western Blotting

**Image 1.** Western blot All lanes: LILRB4 antibody at 4.39  $\mu$ g/mL + A549 whole cell lysate Secondary Goat polyclonal to rabbit IgG at 1/10000 dilution Predicted band size: 50 kDa Observed band size: 50 kDa