

Datasheet for ABIN7158291
anti-LAIR1 antibody (AA 22-165)

3 Images

[Go to Product page](#)

Overview

Quantity:	100 µg
Target:	LAIR1
Binding Specificity:	AA 22-165
Reactivity:	Human
Host:	Rabbit
Clonality:	Polyclonal
Conjugate:	This LAIR1 antibody is un-conjugated
Application:	ELISA, Immunohistochemistry (IHC), Immunofluorescence (IF)

Product Details

Immunogen:	Recombinant Human Leukocyte-associated immunoglobulin-like receptor 1 protein (22-165AA)
Isotype:	IgG
Cross-Reactivity:	Human
Purification:	>95%, Protein G purified

Target Details

Target:	LAIR1
Alternative Name:	LAIR1 (LAIR1 Products)
Background:	Background: Functions as an inhibitory receptor that plays a constitutive negative regulatory role on cytolytic function of natural killer (NK) cells, B-cells and T-cells. Activation by Tyr

Target Details

phosphorylation results in recruitment and activation of the phosphatases PTPN6 and PTPN11. It also reduces the increase of intracellular calcium evoked by B-cell receptor ligation. May also play its inhibitory role independently of SH2-containing phosphatases. Modulates cytokine production in CD4+ T-cells, down-regulating IL2 and IFNG production while inducing secretion of transforming growth factor beta. Down-regulates also IgG and IgE production in B-cells as well as IL8, IL10 and TNF secretion. Inhibits proliferation and induces apoptosis in myeloid leukemia cell lines as well as prevents nuclear translocation of NF-kappa-B p65 subunit/RELA and phosphorylation of I-kappa-B alpha/CHUK in these cells. Inhibits the differentiation of peripheral blood precursors towards dendritic cells.

Aliases: 5133400011Rik antibody, CD305 antibody, D7Bwg0421e antibody, hLAIR1 antibody, LAIR 1 antibody, LAIR-1 antibody, LAIR1 antibody, LAIR1 protein antibody, LAIR1_HUMAN antibody, Leukocyte associated Ig like receptor 1 antibody, Leukocyte associated immunoglobulin like receptor 1 antibody, Leukocyte-associated immunoglobulin-like receptor 1 antibody

UniProt: [Q6GTX8](#)

Application Details

Application Notes: Recommended dilution: IHC:1:20-1:200, IF:1:50-1:200,

Restrictions: For Research Use only

Handling

Format: Liquid

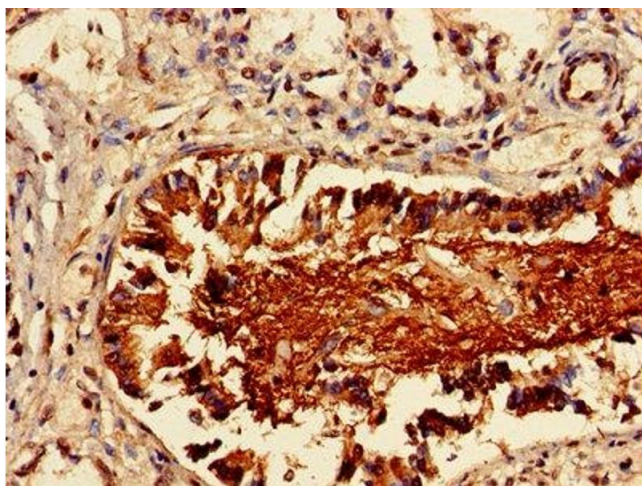
Buffer: Preservative: 0.03 % Proclin 300
Constituents: 50 % Glycerol, 0.01M PBS, PH 7.4

Preservative: ProClin

Precaution of Use: This product contains ProClin: a POISONOUS AND HAZARDOUS SUBSTANCE which should be handled by trained staff only.

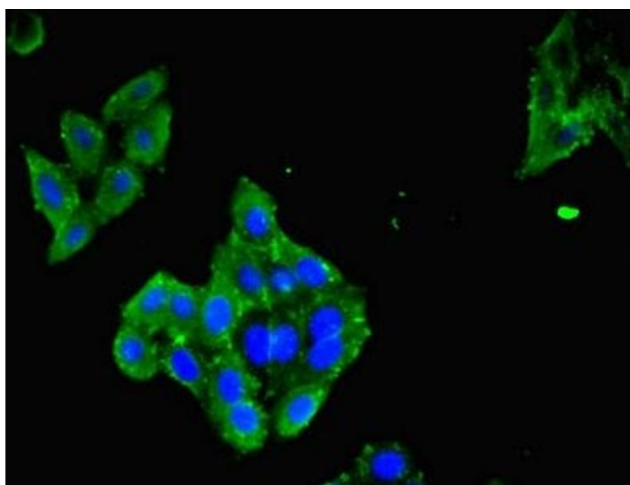
Storage: -20 °C,-80 °C

Storage Comment: Upon receipt, store at -20°C or -80°C. Avoid repeated freeze.



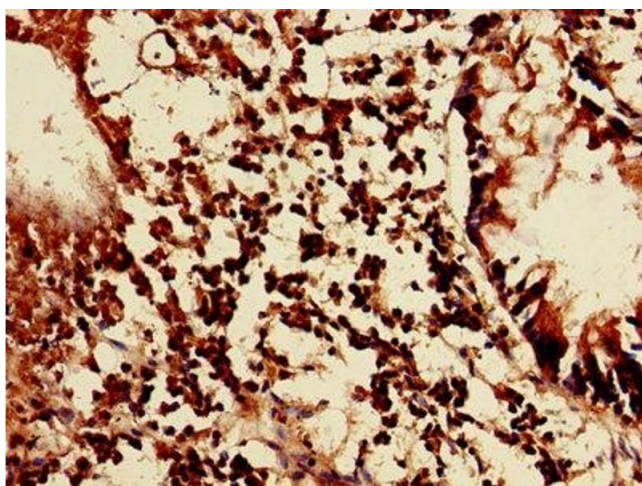
Immunohistochemistry

Image 1. Immunohistochemistry of paraffin-embedded human lung cancer using ABIN7158291 at dilution of 1:100



Immunofluorescence

Image 2. Immunofluorescent analysis of HepG2 cells using ABIN7158291 at dilution of 1:100 and Alexa Fluor 488-conjugated AffiniPure Goat Anti-Rabbit IgG(H+L)



Immunohistochemistry

Image 3. Immunohistochemistry of paraffin-embedded human appendix tissue using ABIN7158291 at dilution of 1:100