



[Go to Product page](#)

Datasheet for ABIN7158346  
**anti-LIMS3 antibody (AA 1-117)**

3 Images

### Overview

Quantity:	100 µg
Target:	LIMS3
Binding Specificity:	AA 1-117
Reactivity:	Human
Host:	Rabbit
Clonality:	Polyclonal
Conjugate:	This LIMS3 antibody is un-conjugated
Application:	ELISA, Immunohistochemistry (IHC), Immunofluorescence (IF)

### Product Details

Immunogen:	Recombinant Human LIM and senescent cell antigen-like-containing domain protein 3 protein (1-117AA)
Isotype:	IgG
Cross-Reactivity:	Human
Purification:	>95%, Protein G purified

### Target Details

Target:	LIMS3
Alternative Name:	LIMS3 ( <a href="#">LIMS3 Products</a> )
Background:	LIMS3 antibody, PINCH3LIM and senescent cell antigen-like-containing domain protein 3

## Target Details

antibody, Particularly interesting new Cys-His protein 3 antibody, PINCH-3 antibody

UniProt: [P0CW19](#)

## Application Details

Application Notes: Recommended dilution: IHC:1:20-1:200, IF:1:50-1:200,

Restrictions: For Research Use only

## Handling

Format: Liquid

Buffer: Preservative: 0.03 % Proclin 300  
Constituents: 50 % Glycerol, 0.01M PBS, PH 7.4

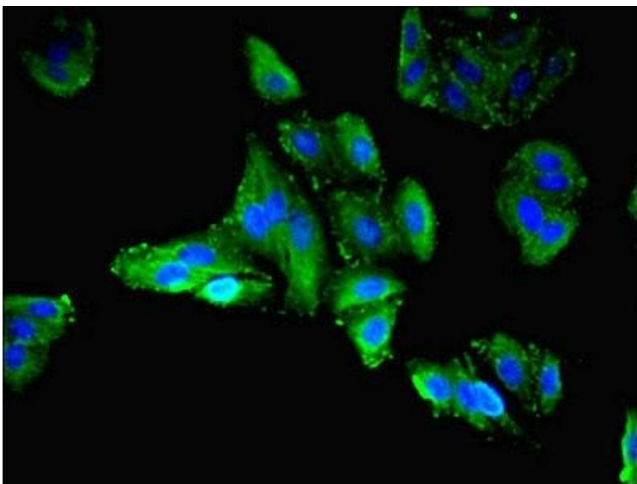
Preservative: ProClin

Precaution of Use: This product contains ProClin: a POISONOUS AND HAZARDOUS SUBSTANCE which should be handled by trained staff only.

Storage: -20 °C,-80 °C

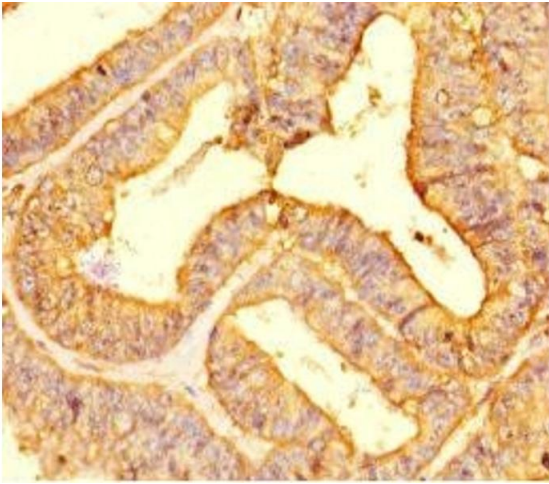
Storage Comment: Upon receipt, store at -20°C or -80°C. Avoid repeated freeze.

## Images



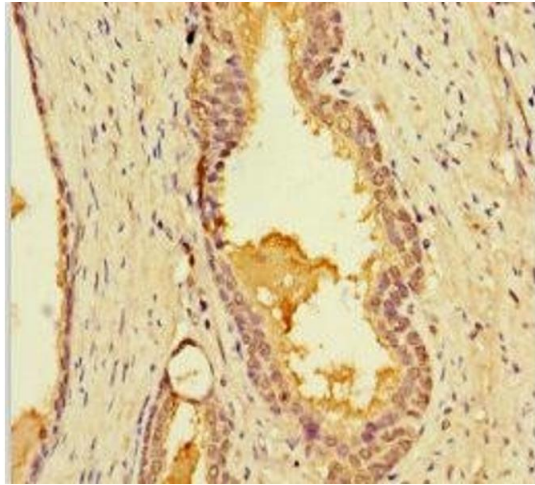
### Immunofluorescence

**Image 1.** Immunofluorescent analysis of HepG2 cells using ABIN7158346 at dilution of 1:100 and Alexa Fluor 488-conjugated AffiniPure Goat Anti-Rabbit IgG(H+L)



#### Immunohistochemistry

**Image 2.** Immunohistochemistry of paraffin-embedded human endometrial cancer using ABIN7158346 at dilution of 1:100



#### Immunohistochemistry

**Image 3.** Immunohistochemistry of paraffin-embedded human prostate cancer using ABIN7158346 at dilution of 1:100