

Datasheet for ABIN7158354

**anti-LIM Domain Kinase 1 antibody (AA 179-320)**[Go to Product page](#)**1** Image

## Overview

Quantity:	100 µg
Target:	LIM Domain Kinase 1 (LIMK1)
Binding Specificity:	AA 179-320
Reactivity:	Human
Host:	Rabbit
Clonality:	Polyclonal
Conjugate:	This LIM Domain Kinase 1 antibody is un-conjugated
Application:	ELISA, Immunohistochemistry (IHC)

## Product Details

Immunogen:	Recombinant Human LIM domain kinase 1 protein (179-320AA)
Isotype:	IgG
Cross-Reactivity:	Human
Purification:	>95%, Protein G purified

## Target Details

Target:	LIM Domain Kinase 1 (LIMK1)
Alternative Name:	LIMK1 ( <a href="#">LIMK1 Products</a> )
Background:	Background: Serine/threonine-protein kinase that plays an essential role in the regulation of actin filament dynamics. Acts downstream of several Rho family GTPase signal transduction

## Target Details

pathways. Activated by upstream kinases including ROCK1, PAK1 and PAK4, which phosphorylate LIMK1 on a threonine residue located in its activation loop. LIMK1 subsequently phosphorylates and inactivates the actin binding/depolymerizing factors cofilin-1/CFL1, cofilin-2/CFL2 and destrin/DSTN, thereby preventing the cleavage of filamentous actin (F-actin), and stabilizing the actin cytoskeleton. In this way LIMK1 regulates several actin-dependent biological processes including cell motility, cell cycle progression, and differentiation. Phosphorylates TPPP on serine residues, thereby promoting microtubule disassembly. Stimulates axonal outgrowth and may be involved in brain development. Isoform 3 has a dominant negative effect on actin cytoskeletal changes. Required for atypical chemokine receptor ACKR2-induced phosphorylation of cofilin (CFL1).

Aliases: EC 2.7.11.1 antibody, LIM domain kinase 1 antibody, LIM motif-containing protein kinase antibody, LIMK antibody, LIMK-1 antibody, limk1 antibody, LIMK1\_HUMAN antibody

UniProt: [P53667](#)

Pathways: [Caspase Cascade in Apoptosis](#), [Regulation of Cell Size](#), [CXCR4-mediated Signaling Events](#)

## Application Details

Application Notes: Recommended dilution: IHC:1:20-1:200,

Restrictions: For Research Use only

## Handling

Format: Liquid

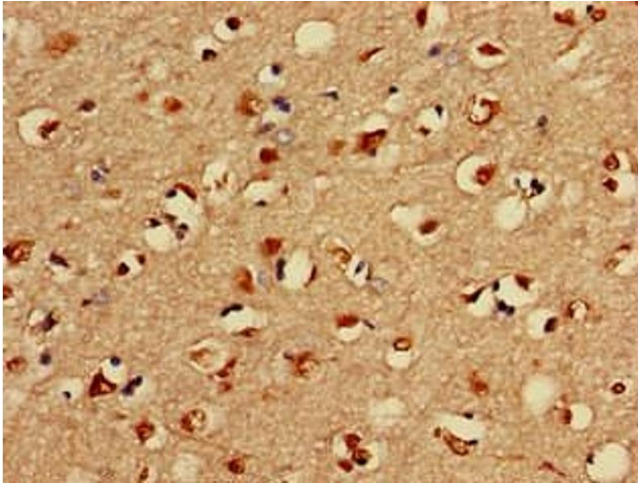
Buffer: Preservative: 0.03 % Proclin 300  
Constituents: 50 % Glycerol, 0.01M PBS, pH 7.4

Preservative: ProClin

Precaution of Use: This product contains ProClin: a POISONOUS AND HAZARDOUS SUBSTANCE which should be handled by trained staff only.

Storage: -20 °C,-80 °C

Storage Comment: Upon receipt, store at -20°C or -80°C. Avoid repeated freeze.



#### Immunohistochemistry

**Image 1.** Immunohistochemistry of paraffin-embedded human brain tissue using ABIN7158354 at dilution of 1:100