

Datasheet for ABIN7158363  
**anti-LM07 antibody (AA 1301-1465)**[Go to Product page](#)

## 3 Images

## Overview

Quantity:	100 µg
Target:	LM07
Binding Specificity:	AA 1301-1465
Reactivity:	Human
Host:	Rabbit
Clonality:	Polyclonal
Conjugate:	This LM07 antibody is un-conjugated
Application:	ELISA, Immunofluorescence (IF), Immunohistochemistry (IHC)

## Product Details

Immunogen:	Recombinant Human LIM domain only protein 7 protein (1301-1465AA)
Isotype:	IgG
Cross-Reactivity:	Human
Purification:	>95%, Protein G purified

## Target Details

Target:	LM07
Alternative Name:	LM07 ( <a href="#">LM07 Products</a> )
Background:	Background: cytoplasm, cytosol, focal adhesion, nucleus, ubiquitin ligase complex, ubiquitin-protein transferase activity, post-translational protein modification, protein polyubiquitination,

## Target Details

protein ubiquitination

Aliases: F box only protein 20 antibody, F box protein Fbx20 antibody, F-box only protein 20 antibody, FBX20 antibody, FBXO20 antibody, HGNC13591 antibody, KIAA0858 antibody, LIM domain only 7 antibody, LIM domain only protein 7 antibody, LMO 7 antibody, LMO-7 antibody, LMO7 antibody, LMO7\_HUMAN antibody, LOMP antibody, LOMP protein antibody, Zinc finger domain containing protein antibody

UniProt: [Q8WWI1](#)

## Application Details

Application Notes: Recommended dilution: IHC:1:200-1:500, IF:1:50-1:200,

Restrictions: For Research Use only

## Handling

Format: Liquid

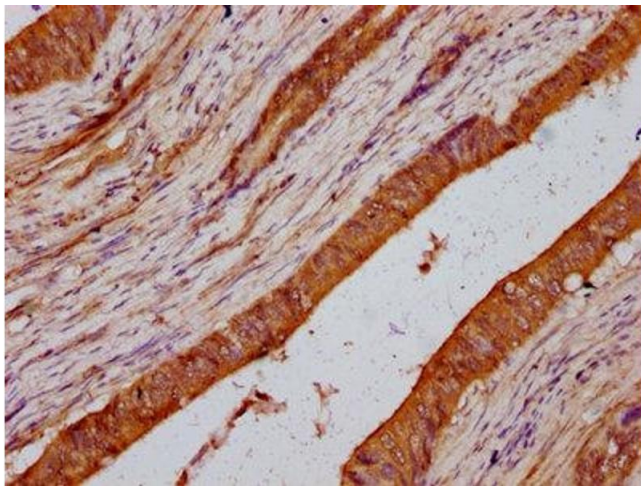
Buffer: Preservative: 0.03 % Proclin 300  
Constituents: 50 % Glycerol, 0.01M PBS, pH 7.4

Preservative: ProClin

Precaution of Use: This product contains ProClin: a POISONOUS AND HAZARDOUS SUBSTANCE which should be handled by trained staff only.

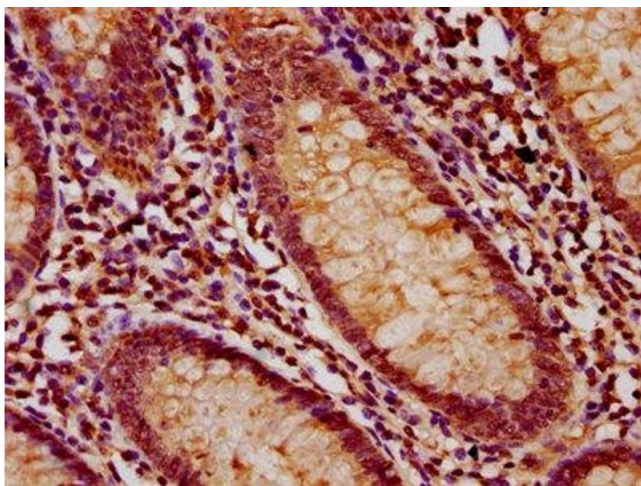
Storage: -20 °C, -80 °C

Storage Comment: Upon receipt, store at -20°C or -80°C. Avoid repeated freeze.



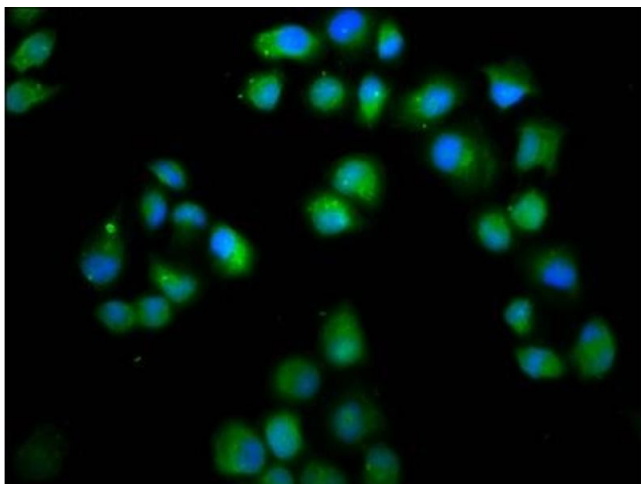
#### Immunohistochemistry

**Image 1.** IHC image of ABIN7158363 diluted at 1:200 and staining in paraffin-embedded human colon cancer performed on a Leica Bond™ system. After dewaxing and hydration, antigen retrieval was mediated by high pressure in a citrate buffer (pH 6.0). Section was blocked with 10% normal goat serum 30min at RT. Then primary antibody (1% BSA) was incubated at 4°C overnight. The primary is detected by a biotinylated secondary antibody and visualized using an HRP conjugated SP system.



#### Immunohistochemistry

**Image 2.** IHC image of ABIN7158363 diluted at 1:200 and staining in paraffin-embedded human appendix tissue performed on a Leica Bond™ system. After dewaxing and hydration, antigen retrieval was mediated by high pressure in a citrate buffer (pH 6.0). Section was blocked with 10% normal goat serum 30min at RT. Then primary antibody (1% BSA) was incubated at 4°C overnight. The primary is detected by a biotinylated secondary antibody and visualized using an HRP conjugated SP system.



#### Immunofluorescence

**Image 3.** Immunofluorescence staining of HeLa cells with ABIN7158363 at 1:66, counter-stained with DAPI. The cells were fixed in 4% formaldehyde, permeabilized using 0.2% Triton X-100 and blocked in 10% normal Goat Serum. The cells were then incubated with the antibody overnight at 4°C. The secondary antibody was Alexa Fluor 488-conjugated AffiniPure Goat Anti-Rabbit IgG(H+L).