

Datasheet for ABIN7158393  
**anti-LSAMP antibody (AA 168-287)**[Go to Product page](#)

## 2 Images

## Overview

Quantity:	100 µg
Target:	LSAMP
Binding Specificity:	AA 168-287
Reactivity:	Human
Host:	Rabbit
Clonality:	Polyclonal
Conjugate:	This LSAMP antibody is un-conjugated
Application:	ELISA, Western Blotting (WB), Immunofluorescence (IF)

## Product Details

Immunogen:	Recombinant Human Limbic system-associated membrane protein (168-287AA)
Isotype:	IgG
Cross-Reactivity:	Human, Mouse, Rat
Purification:	>95%, Protein G purified

## Target Details

Target:	LSAMP
Alternative Name:	LSAMP ( <a href="#">LSAMP Products</a> )
Background:	Background: Mediates selective neuronal growth and axon targeting. Contributes to the guidance of developing axons and remodeling of mature circuits in the limbic system. Essential

## Target Details

for normal growth of the hippocampal mossy fiber projection (By similarity).

Aliases: IgLON family member 3 antibody, IGLON3 antibody, Lam antibody, LAMP antibody, Limbic system associated membrane protein antibody, Limbic system associated membrane protein precursor antibody, Limbic system-associated membrane protein antibody, LSAMP antibody, LSAMP\_HUMAN antibody

UniProt: [Q13449](#)

## Application Details

Application Notes: Recommended dilution: WB:1:500-1:5000, IF:1:50-1:200,

Restrictions: For Research Use only

## Handling

Format: Liquid

Buffer: Preservative: 0.03 % Proclin 300  
Constituents: 50 % Glycerol, 0.01M PBS, pH 7.4

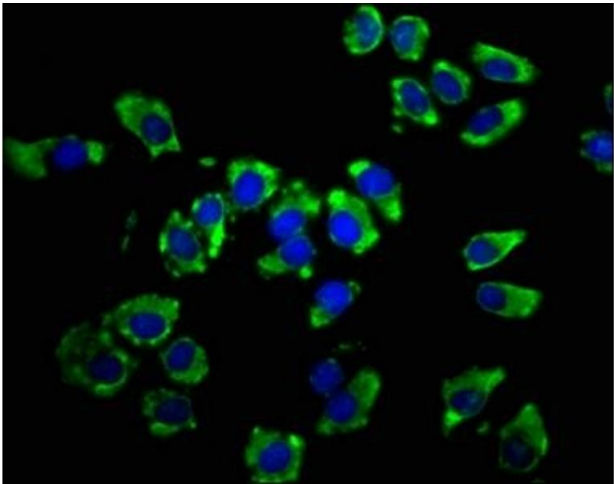
Preservative: ProClin

Precaution of Use: This product contains ProClin: a POISONOUS AND HAZARDOUS SUBSTANCE which should be handled by trained staff only.

Storage: -20 °C,-80 °C

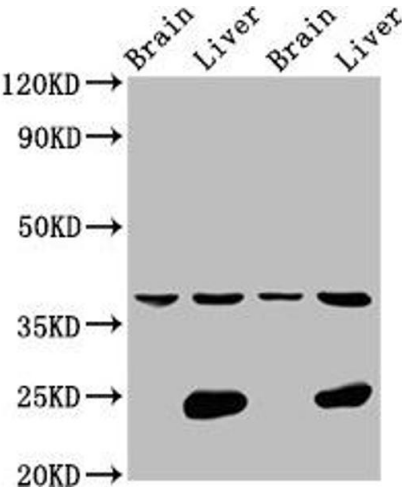
Storage Comment: Upon receipt, store at -20°C or -80°C. Avoid repeated freeze.

## Images



### Immunofluorescence

**Image 1.** Immunofluorescence staining of A549 cells with ABIN7158393 at 1:66, counter-stained with DAPI. The cells were fixed in 4 % formaldehyde, permeabilized using 0.2 % Triton X-100 and blocked in 10 % normal Goat Serum. The cells were then incubated with the antibody overnight at 4 °C. The secondary antibody was Alexa Fluor 488-conjugated AffiniPure Goat Anti-Rabbit IgG(H+L).



Western Blotting

**Image 2.** Western Blot Positive WB detected in: Rat brain tissue, Rat liver tissue, Mouse brain tissue, Mouse liver tissue All lanes: LSAMP antibody at 4.2 µg/mL Secondary Goat polyclonal to rabbit IgG at 1/50000 dilution Predicted band size: 38 kDa Observed band size: 38 kDa