



[Go to Product page](#)

Datasheet for ABIN7158401
anti-L1TD1 antibody (AA 665-865)

2 Images

Overview

Quantity:	100 µg
Target:	L1TD1
Binding Specificity:	AA 665-865
Reactivity:	Human
Host:	Rabbit
Clonality:	Polyclonal
Conjugate:	This L1TD1 antibody is un-conjugated
Application:	ELISA, Immunohistochemistry (IHC)

Product Details

Immunogen:	Recombinant Human LINE-1 type transposase domain-containing protein 1 protein (665-865AA)
Isotype:	IgG
Cross-Reactivity:	Human
Purification:	>95%, Protein G purified

Target Details

Target:	L1TD1
Alternative Name:	L1TD1 (L1TD1 Products)
Background:	ECAT11 antibody, ES cell associated protein 11 antibody, ES cell-associated protein 11

Target Details

antibody, FLJ10884 antibody, L1td1 antibody, LINE 1 type transposase domain containing 1 antibody, LINE 1 type transposase domain containing protein 1 antibody, LINE-1 type transposase domain-containing protein 1 antibody, LITD1_HUMAN antibody, MGC133253 antibody, OTTHUMP00000010477 antibody, RP5-1155K23.3 antibody

UniProt: [Q5T7N2](#)

Application Details

Application Notes: Recommended dilution: IHC:1:20-1:200,

Restrictions: For Research Use only

Handling

Format: Liquid

Buffer: Preservative: 0.03 % Proclin 300
Constituents: 50 % Glycerol, 0.01M PBS, PH 7.4

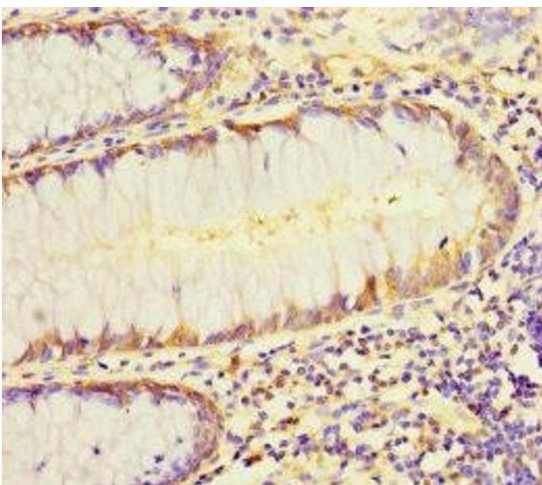
Preservative: ProClin

Precaution of Use: This product contains ProClin: a POISONOUS AND HAZARDOUS SUBSTANCE which should be handled by trained staff only.

Storage: -20 °C,-80 °C

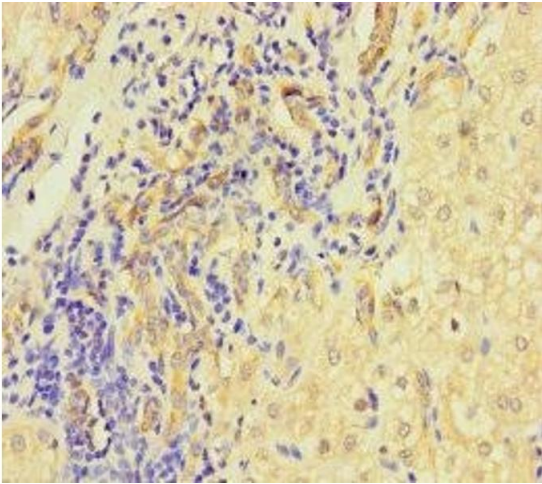
Storage Comment: Upon receipt, store at -20°C or -80°C. Avoid repeated freeze.

Images



Immunohistochemistry

Image 1. Immunohistochemistry of paraffin-embedded human colon cancer using ABIN7158401 at dilution of 1:100



Immunohistochemistry

Image 2. Immunohistochemistry of paraffin-embedded human liver cancer using ABIN7158401 at dilution of 1:100