



[Go to Product page](#)

Datasheet for ABIN7158406
anti-LMF2 antibody (AA 432-636)

2 Images

Overview

Quantity:	100 µg
Target:	LMF2
Binding Specificity:	AA 432-636
Reactivity:	Human
Host:	Rabbit
Clonality:	Polyclonal
Conjugate:	This LMF2 antibody is un-conjugated
Application:	Western Blotting (WB), ELISA, Immunofluorescence (IF)

Product Details

Immunogen:	Recombinant Human Lipase maturation factor 2 protein (432-636AA)
Isotype:	IgG
Cross-Reactivity:	Human, Mouse
Purification:	>95%, Protein G purified

Target Details

Target:	LMF2
Alternative Name:	LMF2 (LMF2 Products)
Background:	Background: Involved in the maturation of specific proteins in the endoplasmic reticulum. May be required for maturation and transport of active lipoprotein lipase (LPL) through the secretory

Target Details

pathway.

Aliases: Lipase maturation factor 2 antibody, Lmf2 antibody, LMF2_HUMAN antibody, OTTHUMP00000196605 antibody, TMEM112B antibody, TMEM153 antibody, Transmembrane protein 112B antibody, Transmembrane protein 153 antibody

UniProt: [Q9BU23](#)

Application Details

Application Notes: Recommended dilution: WB:1:1000-1:5000, IF:1:50-1:200,

Restrictions: For Research Use only

Handling

Format: Liquid

Buffer: Preservative: 0.03 % Proclin 300
Constituents: 50 % Glycerol, 0.01M PBS, PH 7.4

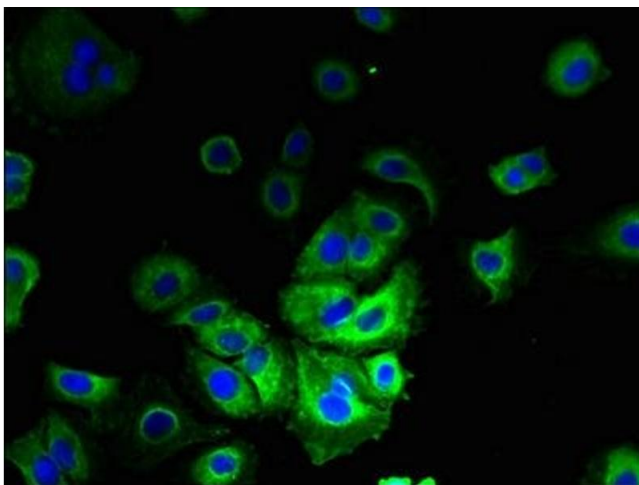
Preservative: ProClin

Precaution of Use: This product contains ProClin: a POISONOUS AND HAZARDOUS SUBSTANCE which should be handled by trained staff only.

Storage: -20 °C,-80 °C

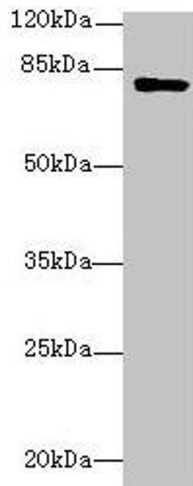
Storage Comment: Upon receipt, store at -20°C or -80°C. Avoid repeated freeze.

Images



Immunofluorescence

Image 1. Immunofluorescent analysis of MCF-7 cells using ABIN7158406 at dilution of 1:100 and Alexa Fluor 488-conjugated AffiniPure Goat Anti-Rabbit IgG(H+L)



Western Blotting

Image 2. Western blot All lanes: LMF2 antibody at 6 $\mu\text{g}/\text{mL}$ + Mouse kidney tissue Secondary Goat polyclonal to rabbit IgG at 1/10000 dilution Predicted band size: 80, 77, 68 kDa Observed band size: 80 kDa