

Datasheet for ABIN7158410  
**anti-LIPH antibody (AA 175-325)**[Go to Product page](#)

## 3 Images

## Overview

|                      |  |
|----------------------|--|
| Quantity:            | 100 µg   |
| Target:              | LIPH   |
| Binding Specificity: | AA 175-325   |
| Reactivity:          | Human  |
| Host:                | Rabbit   |
| Clonality:           | Polyclonal   |
| Conjugate:           | This LIPH antibody is un-conjugated                        |
| Application:         | ELISA, Immunohistochemistry (IHC), Immunofluorescence (IF) |

## Product Details

|                   |   |
|-------------------|---|
| Immunogen:        | Recombinant Human Lipase member H protein (175-325AA) |
| Isotype:          | IgG   |
| Cross-Reactivity: | Human   |
| Purification:     | >95%, Protein G purified                              |

## Target Details

|                   |  |
|-------------------|--|
| Target:           | LIPH   |
| Alternative Name: | LIPH ( <a href="#">LIPH Products</a> )   |
| Background:       | Background: Hydrolyzes specifically phosphatidic acid (PA) to produce 2-acyl lysophosphatidic acid (LPA, a potent bioactive lipid mediator) and fatty acid. Does not hydrolyze other |

## Target Details

phospholipids, like phosphatidylserine (PS), phosphatidylcholine (PC) and phosphatidylethanolamine (PE) or triacylglycerol (TG).

Aliases: AH antibody, ARWH2 antibody, LAH2 antibody, Lipase H antibody, Lipase member H antibody, LIPH antibody, LIPH\_HUMAN antibody, LPD lipase related protein antibody, LPD lipase-related protein antibody, LPDLR antibody, Membrane associated phosphatidic acid selective phospholipase A1 alpha antibody, Membrane bound phosphatidic acid selective phospholipase A1 antibody, Membrane-associated phosphatidic acid-selective phospholipase A1-alpha antibody, mPA PLA1 antibody, mPA-PLA1 alpha antibody, MPAPLA1 antibody, OTTHUMP00000210343 antibody, OTTHUMP00000210344 antibody, Phospholipase A1 member B antibody, PLA1B antibody

UniProt: [Q8WWY8](#)

## Application Details

Application Notes: Recommended dilution: IHC:1:200-1:500, IF:1:50-1:200,

Restrictions: For Research Use only

## Handling

Format: Liquid

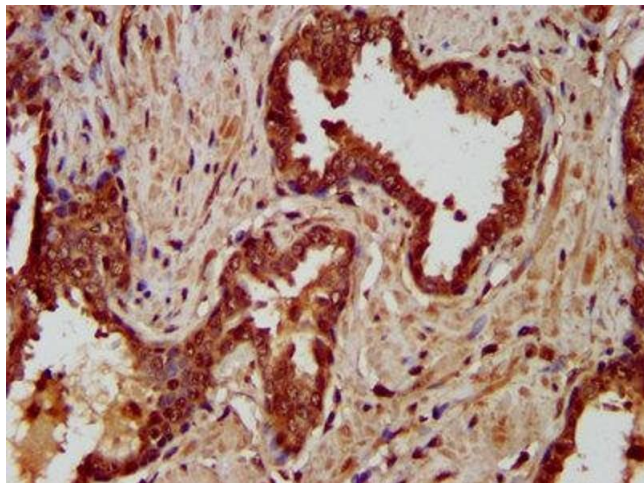
Buffer: Preservative: 0.03 % Proclin 300  
Constituents: 50 % Glycerol, 0.01M PBS, pH 7.4

Preservative: ProClin

Precaution of Use: This product contains ProClin: a POISONOUS AND HAZARDOUS SUBSTANCE which should be handled by trained staff only.

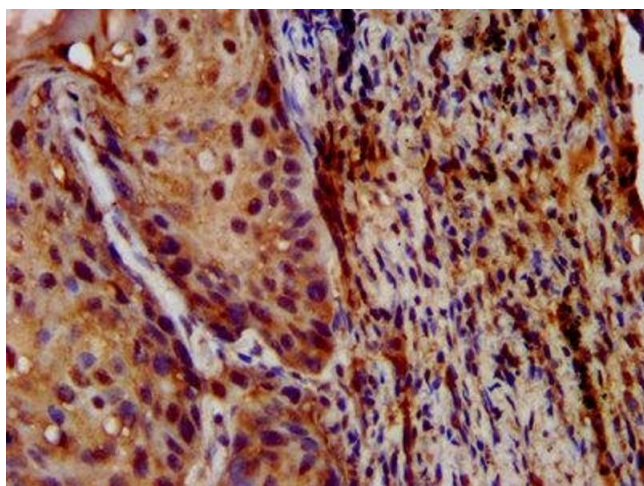
Storage: -20 °C,-80 °C

Storage Comment: Upon receipt, store at -20°C or -80°C. Avoid repeated freeze.



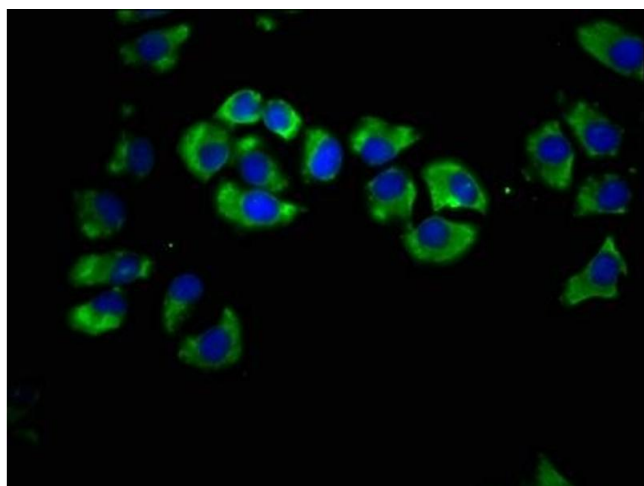
#### Immunohistochemistry

**Image 1.** IHC image of ABIN7158410 diluted at 1:200 and staining in paraffin-embedded human prostate cancer performed on a Leica Bond™ system. After dewaxing and hydration, antigen retrieval was mediated by high pressure in a citrate buffer (pH 6.0). Section was blocked with 10% normal goat serum 30min at RT. Then primary antibody (1% BSA) was incubated at 4°C overnight. The primary is detected by a biotinylated secondary antibody and visualized using an HRP conjugated SP system.



#### Immunohistochemistry

**Image 2.** IHC image of ABIN7158410 diluted at 1:200 and staining in paraffin-embedded human lung cancer performed on a Leica Bond™ system. After dewaxing and hydration, antigen retrieval was mediated by high pressure in a citrate buffer (pH 6.0). Section was blocked with 10% normal goat serum 30min at RT. Then primary antibody (1% BSA) was incubated at 4°C overnight. The primary is detected by a biotinylated secondary antibody and visualized using an HRP conjugated SP system.



#### Immunofluorescence

**Image 3.** Immunofluorescence staining of A549 cells with ABIN7158410 at 1:66, counter-stained with DAPI. The cells were fixed in 4% formaldehyde, permeabilized using 0.2% Triton X-100 and blocked in 10% normal Goat Serum. The cells were then incubated with the antibody overnight at 4°C. The secondary antibody was Alexa Fluor 488-conjugated AffiniPure Goat Anti-Rabbit IgG(H+L).