

Datasheet for ABIN7158418  
**anti-LPPR2 antibody (AA 1-156)**[Go to Product page](#)

## 2 Images

## Overview

Quantity:	100 µg
Target:	LPPR2
Binding Specificity:	AA 1-156
Reactivity:	Human
Host:	Rabbit
Clonality:	Polyclonal
Conjugate:	This LPPR2 antibody is un-conjugated
Application:	ELISA, Immunohistochemistry (IHC), Immunofluorescence (IF)

## Product Details

Immunogen:	Recombinant Human Lipid phosphate phosphatase-related protein type 2 protein (1-156AA)
Isotype:	IgG
Cross-Reactivity:	Human
Purification:	>95%, Protein G purified

## Target Details

Target:	LPPR2
Alternative Name:	PLPPR2 ( <a href="#">LPPR2 Products</a> )
Background:	Background: Plays a role in boundary lubrication within articulating joints. Prevents protein deposition onto cartilage from synovial fluid by controlling adhesion-dependent synovial growth

## Target Details

and inhibiting the adhesion of synovial cells to the cartilage surface. Isoform F plays a role as a growth factor acting on the primitive cells of both hematopoietic and endothelial cell lineages.

Aliases: Lipid phosphate phosphatase-related protein type 2 antibody, LPPR2 antibody, LPPR2\_HUMAN antibody, Plasticity-related gene 4 protein antibody, PRG-4 antibody, PRG4 antibody

UniProt: [Q96GM1](#)

## Application Details

Application Notes: Recommended dilution: IHC:1:20-1:200, IF:1:50-1:200,

Restrictions: For Research Use only

## Handling

Format: Liquid

Buffer: Preservative: 0.03 % Proclin 300  
Constituents: 50 % Glycerol, 0.01M PBS, PH 7.4

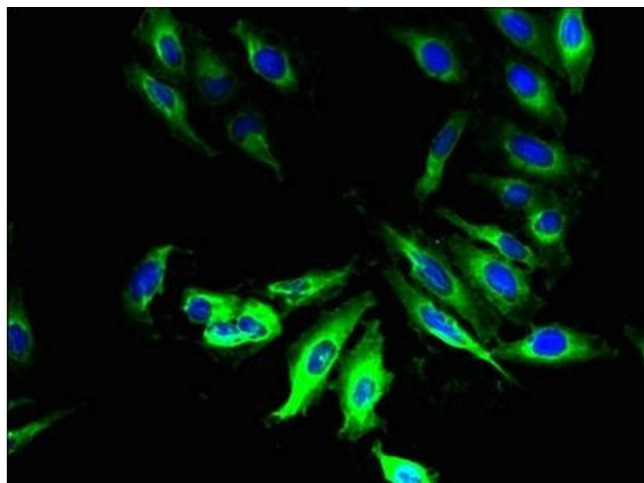
Preservative: ProClin

Precaution of Use: This product contains ProClin: a POISONOUS AND HAZARDOUS SUBSTANCE which should be handled by trained staff only.

Storage: -20 °C,-80 °C

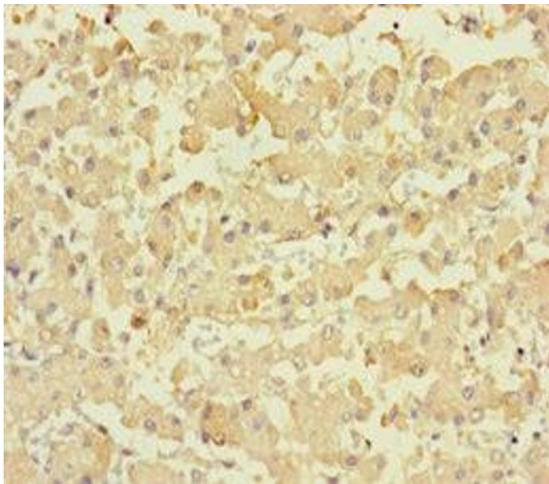
Storage Comment: Upon receipt, store at -20°C or -80°C. Avoid repeated freeze.

## Images



### Immunofluorescence

**Image 1.** Immunofluorescent analysis of HeLa cells using ABIN7158418 at dilution of 1:100 and Alexa Fluor 488-conjugated AffiniPure Goat Anti-Rabbit IgG(H+L)



#### Immunohistochemistry

**Image 2.** Immunohistochemistry of paraffin-embedded human liver tissue using ABIN7158418 at dilution of 1:100