



[Go to Product page](#)

Datasheet for ABIN7158426  
**anti-LSR antibody (AA 112-233)**

2 Images

Overview

Quantity:	100 µg
Target:	LSR
Binding Specificity:	AA 112-233
Reactivity:	Human
Host:	Rabbit
Clonality:	Polyclonal
Conjugate:	This LSR antibody is un-conjugated
Application:	Immunohistochemistry (IHC), ELISA, Immunofluorescence (IF)

Product Details

Immunogen:	Recombinant Human Lipolysis-stimulated lipoprotein receptor protein (112-233AA)
Isotype:	IgG
Cross-Reactivity:	Human
Purification:	>95%, Protein G purified

Target Details

Target:	LSR
Alternative Name:	LSR ( <a href="#">LSR Products</a> )
Background:	Background: Probable role in the clearance of triglyceride-rich lipoprotein from blood. Binds chylomicrons, LDL and VLDL in presence of free fatty acids and allows their subsequent uptake

## Target Details

---

in the cells (By similarity).

Aliases: ILDR3 antibody, Immunoglobulin like domain containing receptor 3 antibody, Lipolysis Stimulated Lipoprotein Receptor antibody, Lipolysis stimulated remnant antibody, Lipolysis-stimulated lipoprotein receptor antibody, LISCH antibody, LISCH protein antibody, LISCH7 antibody, Liver specific bHLH Zip transcription factor antibody, LSR antibody, LSR\_HUMAN antibody, MGC10659 antibody, MGC48312 antibody, MGC48503 antibody

---

UniProt: [Q86X29](#)

## Application Details

---

Application Notes: Recommended dilution: IHC:1:200-1:500, IF:1:50-1:200,

Restrictions: For Research Use only

## Handling

---

Format: Liquid

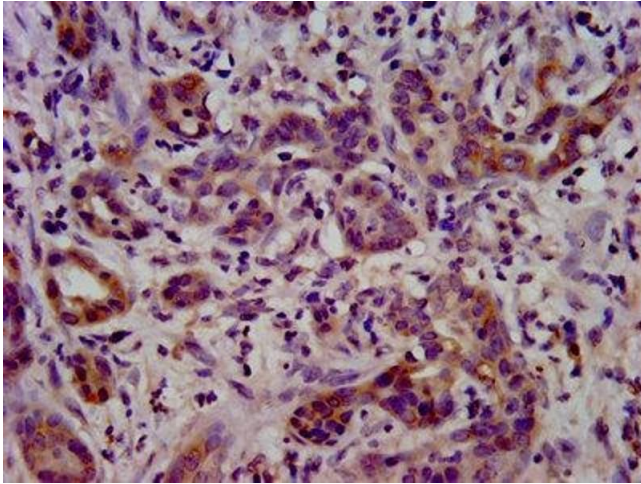
Buffer: Preservative: 0.03 % Proclin 300  
Constituents: 50 % Glycerol, 0.01M PBS, pH 7.4

Preservative: ProClin

Precaution of Use: This product contains ProClin: a POISONOUS AND HAZARDOUS SUBSTANCE which should be handled by trained staff only.

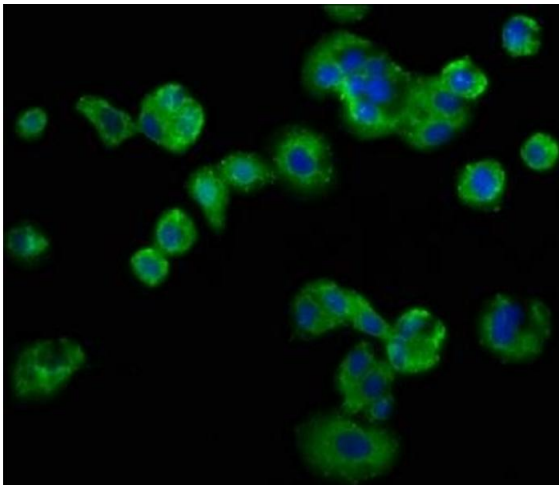
Storage: -20 °C,-80 °C

Storage Comment: Upon receipt, store at -20°C or -80°C. Avoid repeated freeze.



### Immunohistochemistry

**Image 1.** IHC image of ABIN7158426 diluted at 1:400 and staining in paraffin-embedded human pancreatic cancer performed on a Leica Bond™ system. After dewaxing and hydration, antigen retrieval was mediated by high pressure in a citrate buffer (pH 6.0). Section was blocked with 10% normal goat serum 30min at RT. Then primary antibody (1% BSA) was incubated at 4°C overnight. The primary is detected by a biotinylated secondary antibody and visualized using an HRP conjugated SP system.



### Immunofluorescence

**Image 2.** Immunofluorescence staining of HepG2 cells with ABIN7158426 at 1:133, counter-stained with DAPI. The cells were fixed in 4% formaldehyde, permeabilized using 0.2% Triton X-100 and blocked in 10% normal Goat Serum. The cells were then incubated with the antibody overnight at 4°C. The secondary antibody was Alexa Fluor 488-conjugated AffiniPure Goat Anti-Rabbit IgG(H+L).