

Datasheet for ABIN7158430  
**anti-LPP antibody (AA 227-391)**

## 3 Images

[Go to Product page](#)

## Overview

Quantity:	100 µg
Target:	LPP
Binding Specificity:	AA 227-391
Reactivity:	Human
Host:	Rabbit
Clonality:	Polyclonal
Conjugate:	This LPP antibody is un-conjugated
Application:	Western Blotting (WB), ELISA, Immunohistochemistry (IHC)

## Product Details

Immunogen:	Recombinant Human Lipoma-preferred partner protein (227-391AA)
Isotype:	IgG
Cross-Reactivity:	Human
Purification:	>95%, Protein G purified

## Target Details

Target:	LPP
Alternative Name:	LPP ( <a href="#">LPP Products</a> )
Background:	Background: May play a structural role at sites of cell adhesion in maintaining cell shape and motility. In addition to these structural functions, it may also be implicated in signaling events

## Target Details

and activation of gene transcription. May be involved in signal transduction from cell adhesion sites to the nucleus allowing successful integration of signals arising from soluble factors and cell-cell adhesion sites. Also suggested to serve as a scaffold protein upon which distinct protein complexes are assembled in the cytoplasm and in the nucleus.

Aliases: DKFZp77900231 antibody, FLJ30652 antibody, FLJ41512 antibody, LIM domain containing preferred translocation partner in lipoma antibody, LIM domain-containing preferred translocation partner in lipoma antibody, LIM protein antibody, Lipoma preferred partner antibody, Lipoma-preferred partner antibody, lpp antibody, LPP\_HUMAN antibody

UniProt: [Q93052](#)

## Application Details

Application Notes: Recommended dilution: WB:1:500-1:5000, IHC:1:100-1:300,

Restrictions: For Research Use only

## Handling

Format: Liquid

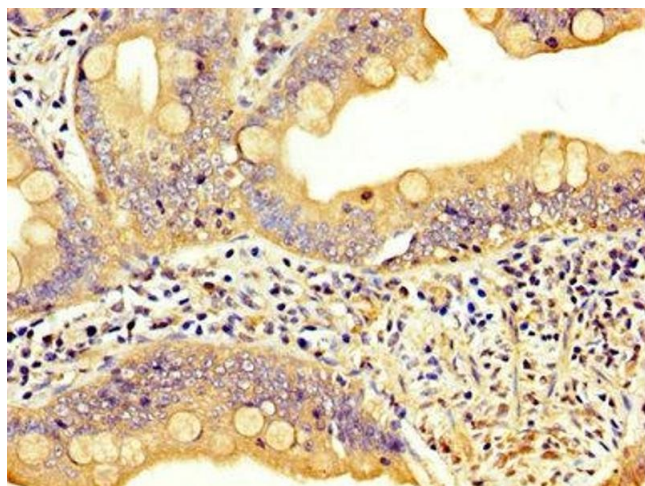
Buffer: Preservative: 0.03 % Proclin 300  
Constituents: 50 % Glycerol, 0.01M PBS, pH 7.4

Preservative: ProClin

Precaution of Use: This product contains ProClin: a POISONOUS AND HAZARDOUS SUBSTANCE which should be handled by trained staff only.

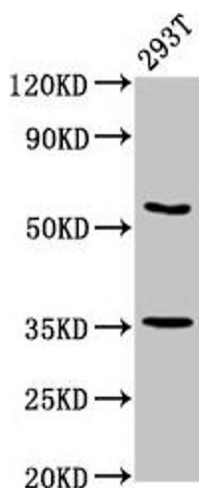
Storage: -20 °C, -80 °C

Storage Comment: Upon receipt, store at -20°C or -80°C. Avoid repeated freeze.



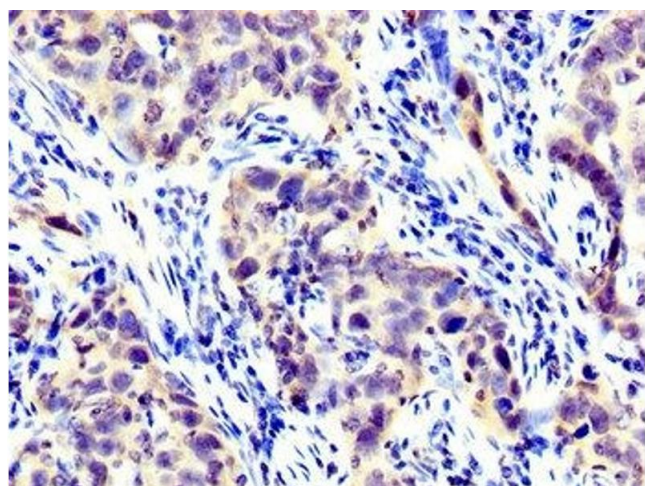
#### Immunohistochemistry

**Image 1.** IHC image of ABIN7158430 diluted at 1:300 and staining in paraffin-embedded human small intestine tissue performed on a Leica Bond™ system. After dewaxing and hydration, antigen retrieval was mediated by high pressure in a citrate buffer (pH 6.0). Section was blocked with 10 % normal goat serum 30 min at RT. Then primary antibody (1 % BSA) was incubated at 4 °C overnight. The primary is detected by a biotinylated secondary antibody and visualized using an HRP conjugated SP system.



#### Western Blotting

**Image 2.** Western Blot Positive WB detected in: 293T whole cell lysate All lanes: LPP antibody at 7.5 µg/mL Secondary Goat polyclonal to rabbit IgG at 1/50000 dilution Predicted band size: 66 kDa Observed band size: 66 kDa



#### Immunohistochemistry

**Image 3.** IHC image of ABIN7158430 diluted at 1:300 and staining in paraffin-embedded human pancreatic cancer performed on a Leica Bond™ system. After dewaxing and hydration, antigen retrieval was mediated by high pressure in a citrate buffer (pH 6.0). Section was blocked with 10 % normal goat serum 30 min at RT. Then primary antibody (1 % BSA) was incubated at 4 °C overnight. The primary is detected by a biotinylated secondary antibody and visualized using an HRP conjugated SP system.