



[Go to Product page](#)

Datasheet for ABIN7158439  
**anti-LRBA antibody (AA 2-252)**

4 Images

Overview

Quantity:	100 µg
Target:	LRBA
Binding Specificity:	AA 2-252
Reactivity:	Human
Host:	Rabbit
Clonality:	Polyclonal
Conjugate:	This LRBA antibody is un-conjugated
Application:	ELISA, Immunohistochemistry (IHC), Immunofluorescence (IF)

Product Details

Immunogen:	Recombinant Human Lipopolysaccharide-responsive and beige-like anchor protein (2-252AA)
Isotype:	IgG
Cross-Reactivity:	Human
Purification:	>95%, Protein G purified

Target Details

Target:	LRBA
Alternative Name:	LRBA ( <a href="#">LRBA Products</a> )
Background:	Background: May be involved in coupling signal transduction and vesicle trafficking to enable polarized secretion and/or membrane deposition of immune effector molecules

## Target Details

Aliases: Beige-like protein antibody, BGL antibody, C80285 antibody, CDC4-like protein antibody, CDC4L antibody, CVID8 antibody, D3ErtD775e antibody, Lab300 antibody, LBA antibody, Lipopolysaccharide-responsive and beige-like anchor protein antibody, LPS-responsive vesicle trafficking beach and anchor containing antibody, Lrba antibody, LRBA\_HUMAN antibody, Vesicle trafficking beach and anchor containing antibody

UniProt: [P50851](#)

## Application Details

Application Notes: Recommended dilution: IHC:1:20-1:200, IF:1:50-1:200,

Restrictions: For Research Use only

## Handling

Format: Liquid

Buffer: Preservative: 0.03 % Proclin 300  
Constituents: 50 % Glycerol, 0.01M PBS, PH 7.4

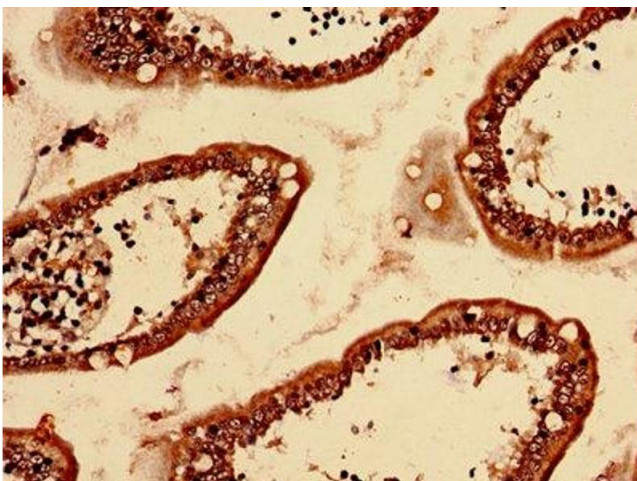
Preservative: ProClin

Precaution of Use: This product contains ProClin: a POISONOUS AND HAZARDOUS SUBSTANCE which should be handled by trained staff only.

Storage: -20 °C,-80 °C

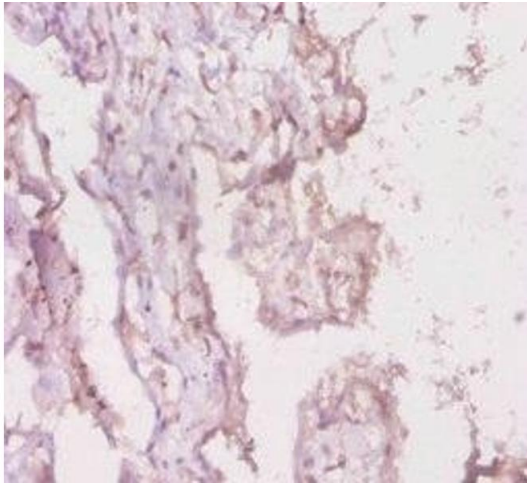
Storage Comment: Upon receipt, store at -20°C or -80°C. Avoid repeated freeze.

## Images



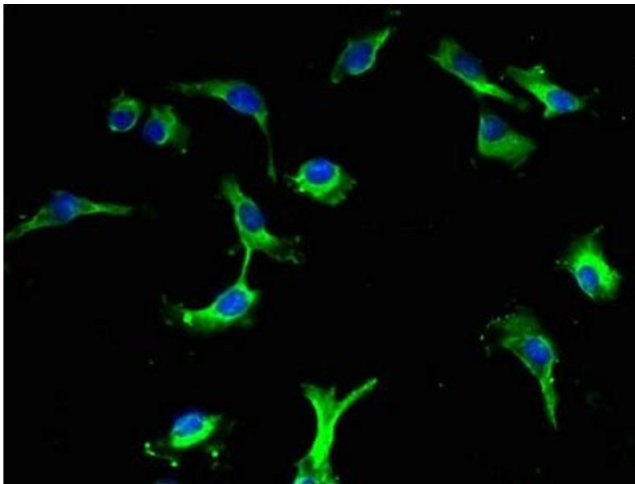
### Immunohistochemistry

**Image 1.** Immunohistochemistry analysis of human small intestine tissue using ABIN7158439 at dilution of 1:100



### Immunohistochemistry

**Image 2.** Immunohistochemistry of paraffin-embedded human placenta tissue using ABIN7158439 at dilution of 1:20



### Immunofluorescence

**Image 3.** Immunofluorescent analysis of U251 cells using ABIN7158439 at dilution of 1:100 and Alexa Fluor 488-conjugated AffiniPure Goat Anti-Rabbit IgG(H+L)

Please check the [product details page](#) for more images. Overall 4 images are available for ABIN7158439.