



Datasheet for ABIN7158447
anti-LOXHD1 antibody (AA 1101-1366)



[Go to Product page](#)

2 Images

Overview

| | |
|----------------------|------------------------------------------------------------|
| Quantity: | 100 µg |
| Target: | LOXHD1 |
| Binding Specificity: | AA 1101-1366 |
| Reactivity: | Human |
| Host: | Rabbit |
| Clonality: | Polyclonal |
| Conjugate: | This LOXHD1 antibody is un-conjugated |
| Application: | ELISA, Immunohistochemistry (IHC), Immunofluorescence (IF) |

Product Details

| | |
|-------------------|-------------------------------------------------------------------------------------------|
| Immunogen: | Recombinant Human Lipoxygenase homology domain-containing protein 1 protein (1101-1366AA) |
| Isotype: | IgG |
| Cross-Reactivity: | Human |
| Purification: | >95%, Protein G purified |

Target Details

| | |
|-------------------|--------------------------------------------------------------------------------------------------|
| Target: | LOXHD1 |
| Alternative Name: | LOXHD1 (LOXHD1 Products) |
| Background: | Background: Involved in hearing. Required for normal function of hair cells in the inner ear (By |

Target Details

similarity).

Aliases: LOXHD1 antibody, Lipoxygenase homology domain-containing protein 1 antibody

UniProt: [Q8IVV2](#)

Application Details

Application Notes: Recommended dilution: IHC:1:20-1:200, IF:1:50-1:200,

Restrictions: For Research Use only

Handling

Format: Liquid

Buffer: Preservative: 0.03 % Proclin 300
Constituents: 50 % Glycerol, 0.01M PBS, pH 7.4

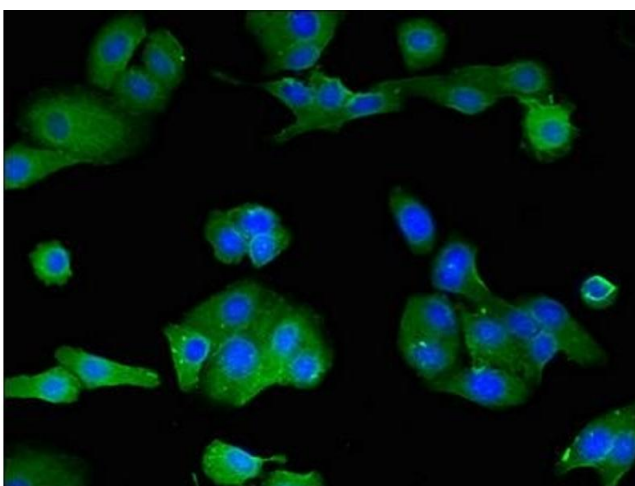
Preservative: ProClin

Precaution of Use: This product contains ProClin: a POISONOUS AND HAZARDOUS SUBSTANCE which should be handled by trained staff only.

Storage: -20 °C,-80 °C

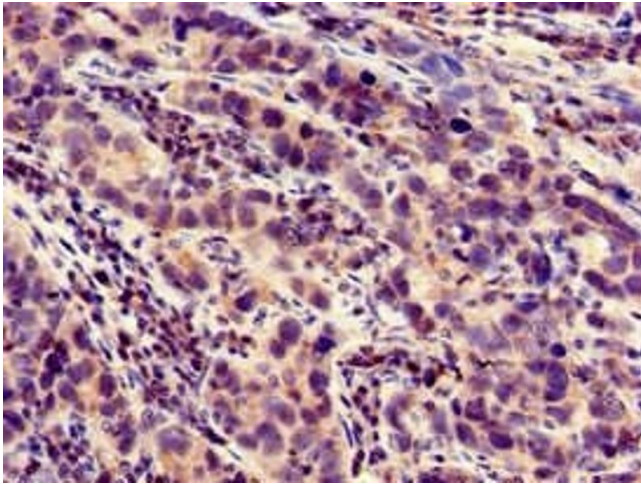
Storage Comment: Upon receipt, store at -20°C or -80°C. Avoid repeated freeze.

Images



Immunofluorescence

Image 1. Immunofluorescent analysis of HepG2 cells using ABIN7158447 at dilution of 1:100 and Alexa Fluor 488-conjugated AffiniPure Goat Anti-Rabbit IgG(H+L)



Immunohistochemistry

Image 2. Immunohistochemistry of paraffin-embedded human pancreatic cancer using ABIN7158447 at dilution of 1:100