



[Go to Product page](#)

Datasheet for ABIN7158464
anti-REG1A antibody (AA 23-166)

2 Images

Overview

Quantity:	100 µg
Target:	REG1A
Binding Specificity:	AA 23-166
Reactivity:	Human
Host:	Rabbit
Clonality:	Polyclonal
Conjugate:	This REG1A antibody is un-conjugated
Application:	Immunohistochemistry (IHC), ELISA

Product Details

Immunogen:	Recombinant Human Lithostathine-1-alpha protein (23-166AA)
Isotype:	IgG
Cross-Reactivity:	Human
Purification:	>95%, Protein G purified

Target Details

Target:	REG1A
Alternative Name:	REG1A (REG1A Products)
Background:	Background: Might act as an inhibitor of spontaneous calcium carbonate precipitation. May be associated with neuronal sprouting in brain, and with brain and pancreas regeneration.

Target Details

Aliases: ICRF antibody, Islet cells regeneration factor antibody, Islet of Langerhans regenerating protein antibody, Lithostathine 1 alpha antibody, Lithostathine 1 alpha precursor antibody, Lithostathine antibody, Lithostathine-1-alpha antibody, MGC12447 antibody, P19 antibody, Pancreatic stone protein antibody, Pancreatic stone protein secretory antibody, Pancreatic thread protein antibody, Protein X antibody, PSP antibody, PSPS antibody, PSPS1 antibody, PTP antibody, RATRGPI antibody, REG antibody, REG-1-alpha antibody, Reg1 antibody, REG1A antibody, REG1A_HUMAN antibody, Regenerating islet derived 1 alpha antibody, Regenerating islet derived 1 alpha pancreatic stone protein pancreatic thread protein antibody, Regenerating islet-derived protein 1-alpha antibody, Regenerating protein I alpha antibody

UniProt: [P05451](#)

Application Details

Application Notes: Recommended dilution: IHC:1:20-1:200,

Restrictions: For Research Use only

Handling

Format: Liquid

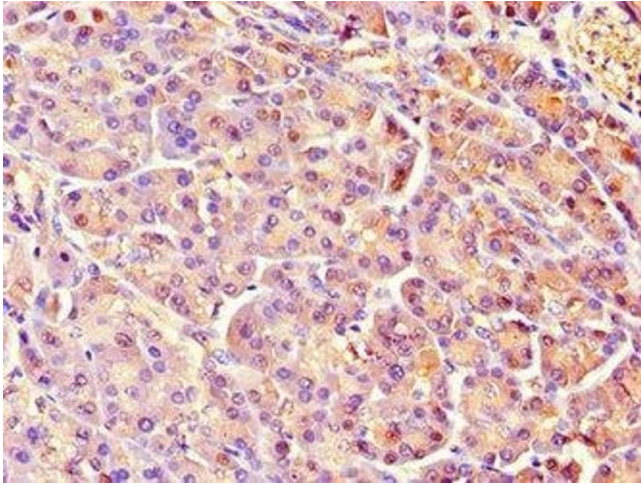
Buffer: Preservative: 0.03 % Proclin 300
Constituents: 50 % Glycerol, 0.01M PBS, PH 7.4

Preservative: ProClin

Precaution of Use: This product contains ProClin: a POISONOUS AND HAZARDOUS SUBSTANCE which should be handled by trained staff only.

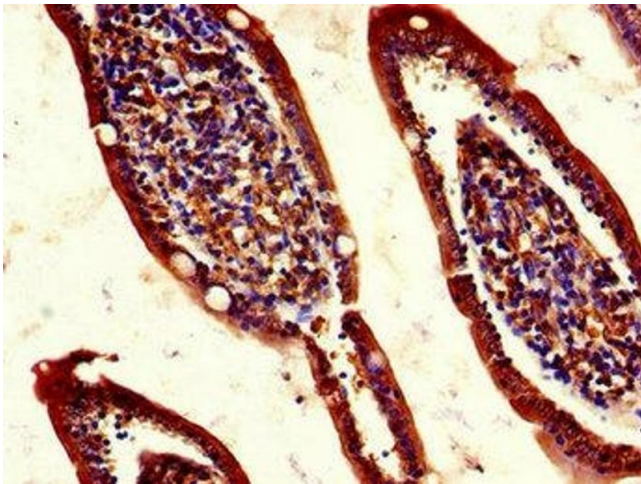
Storage: -20 °C,-80 °C

Storage Comment: Upon receipt, store at -20°C or -80°C. Avoid repeated freeze.



Immunohistochemistry

Image 1. Immunohistochemistry of paraffin-embedded human pancreatic tissue using ABIN7158464 at dilution of 1:100



Immunohistochemistry

Image 2. Immunohistochemistry of paraffin-embedded human small intestine tissue using ABIN7158464 at dilution of 1:100