



[Go to Product page](#)

Datasheet for ABIN7158476
anti-CES1 antibody (AA 291-566)

3 Images

Overview

Quantity:	100 µg
Target:	CES1
Binding Specificity:	AA 291-566
Reactivity:	Human
Host:	Rabbit
Clonality:	Polyclonal
Conjugate:	This CES1 antibody is un-conjugated
Application:	Western Blotting (WB), Immunohistochemistry (IHC), ELISA, Immunofluorescence (IF)

Product Details

Immunogen:	Recombinant Human Liver carboxylesterase 1 protein (291-566AA)
Isotype:	IgG
Cross-Reactivity:	Human, Mouse
Purification:	>95%, Protein G purified

Target Details

Target:	CES1
Alternative Name:	CES1 (CES1 Products)
Background:	Background: Involved in the detoxification of xenobiotics and in the activation of ester and amide prodrugs. Hydrolyzes aromatic and aliphatic esters, but has no catalytic activity toward

Target Details

amides or a fatty acyl-CoA ester. Hydrolyzes the methyl ester group of cocaine to form benzoylecgonine. Catalyzes the transesterification of cocaine to form cocaethylene. Displays fatty acid ethyl ester synthase activity, catalyzing the ethyl esterification of oleic acid to ethyloleate.

Aliases: ACAT antibody, Acyl coenzyme A cholesterol acyltransferase antibody, Acyl-coenzyme A:cholesterol acyltransferase antibody, Brain carboxylesterase hBr1 antibody, Carboxylesterase ES-3 antibody, Carboxylesterase antibody, Carboxylesterase 1 (monocyte/macrophage serine esterase 1) antibody, Carboxylesterase 1 antibody, Carboxylesterase 1 deficiency, included antibody, Carboxylesterase 2, formerly antibody, CE 1 antibody, CEH antibody, Ces-1 antibody, CES1 antibody, CES2 antibody, CESDD1 antibody, Cholesterol ester hydrolase, neutral, macrophage-derived antibody, Cholesteryl ester hydrolase antibody, Cocaine carboxylesterase antibody, EC 3.1.1.1 antibody, Egasyn antibody, ES-HTEL antibody, ES-x antibody, Es22 antibody, EST1_HUMAN antibody, Esterase 22 antibody, Esterase antibody, hCE 1 antibody, HMSE antibody, HMSE1 antibody, Liver carboxylesterase 1 antibody, Liver carboxylesterase 3 antibody, Methylumbelliferyl acetate deacetylase 1 antibody, MGC117365 antibody, MGC156521 antibody, Monocyte carboxylesterase deficiency, included antibody, Monocyte esterase deficiency, included antibody, Monocyte/macrophage serine esterase antibody, PCE-1 antibody, pl 5.5 esterase antibody, Proline-beta-naphthylamidase antibody, REH antibody, Retinyl ester hydrolase antibody, Serine esterase 1 antibody, Ses-1 antibody, SES1 antibody, TGH antibody, Triacylglycerol hydrolase antibody

UniProt: [P23141](#)

Pathways: [Monocarboxylic Acid Catabolic Process](#)

Application Details

Application Notes: Recommended dilution: WB:1:500-1:5000, IHC:1:20-1:200, IF:1:50-1:200,

Restrictions: For Research Use only

Handling

Format: Liquid

Buffer: Preservative: 0.03 % Proclin 300
Constituents: 50 % Glycerol, 0.01M PBS, PH 7.4

Preservative: ProClin

Precaution of Use: This product contains ProClin: a POISONOUS AND HAZARDOUS SUBSTANCE which should be

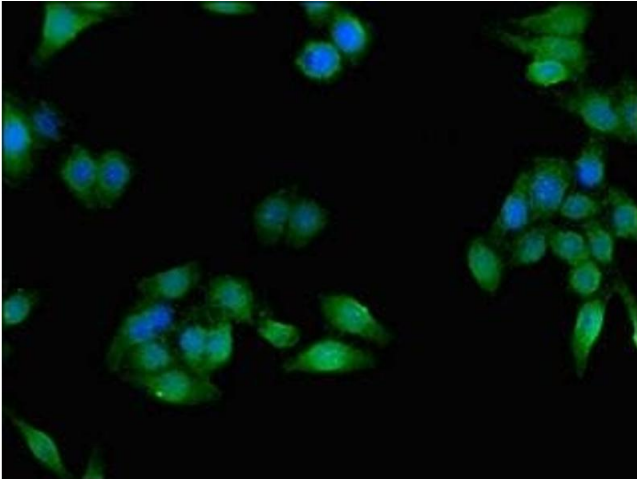
Handling

handled by trained staff only.

Storage: -20 °C,-80 °C

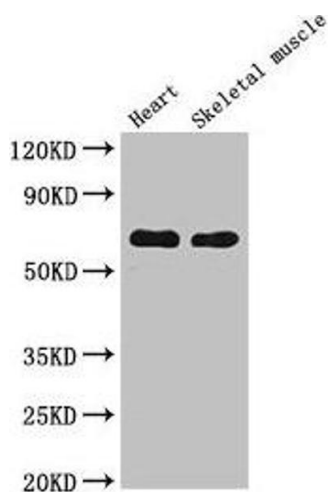
Storage Comment: Upon receipt, store at -20°C or -80°C. Avoid repeated freeze.

Images



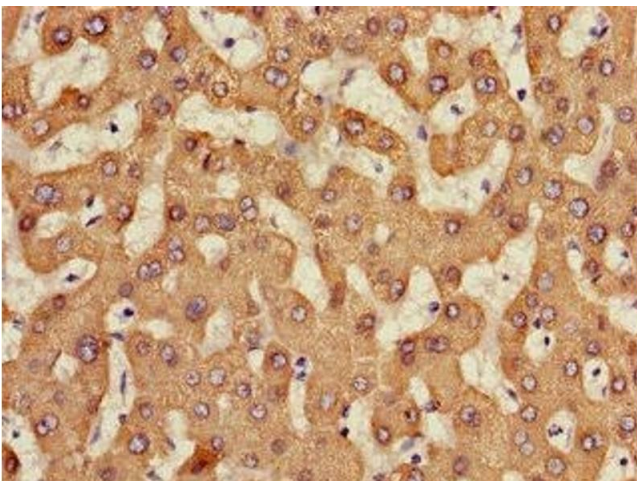
Immunofluorescence

Image 1. Immunofluorescent analysis of HepG2 cells using ABIN7158476 at dilution of 1:100 and Alexa Fluor 488-conjugated AffiniPure Goat Anti-Rabbit IgG(H+L)



Western Blotting

Image 2. Western Blot Positive WB detected in: Mouse heart tissue, Mouse skeletal muscle tissue All lanes: CES1 antibody at 5 µg/mL Secondary Goat polyclonal to rabbit IgG at 1/50000 dilution Predicted band size: 63 kDa Observed band size: 63 kDa



Immunohistochemistry

Image 3. Immunohistochemistry of paraffin-embedded human liver tissue using ABIN7158476 at dilution of 1:100