

Datasheet for ABIN7158488
anti-LONP1 antibody (AA 614-959)[Go to Product page](#)

2 Images

Overview

Quantity:	100 µg
Target:	LONP1
Binding Specificity:	AA 614-959
Reactivity:	Human
Host:	Rabbit
Clonality:	Polyclonal
Conjugate:	This LONP1 antibody is un-conjugated
Application:	ELISA, Immunohistochemistry (IHC), Immunofluorescence (IF)

Product Details

Immunogen:	Recombinant Human Lon protease homolog, mitochondrial protein (614-959AA)
Isotype:	IgG
Cross-Reactivity:	Human
Purification:	>95%, Protein G purified

Target Details

Target:	LONP1
Alternative Name:	LONP1 (LONP1 Products)
Background:	Background: ATP-dependent serine protease that mediates the selective degradation of misfolded, unassembled or oxidatively damaged polypeptides as well as certain short-lived

Target Details

regulatory proteins in the mitochondrial matrix. May also have a chaperone function in the assembly of inner membrane protein complexes. Participates in the regulation of mitochondrial gene expression and in the maintenance of the integrity of the mitochondrial genome. Binds to mitochondrial promoters and RNA in a single-stranded, site-specific, and strand-specific manner. May regulate mitochondrial DNA replication and/or gene expression using site-specific, single-stranded DNA binding to target the degradation of regulatory proteins binding to adjacent sites in mitochondrial promoters. Endogenous substrates include mitochondrial steroidogenic acute regulatory (StAR) protein.

Aliases: hLON antibody, hLON ATP dependent protease antibody, LON antibody, Lon peptidase 1, mitochondrial antibody, LON protease antibody, Lon protease homolog antibody, Lon protease like protein antibody, Lon protease-like protein antibody, LONHs antibody, LONM_HUMAN antibody, LONP antibody, Lonp1 antibody, MGC1498 antibody, mitochondrial antibody, Mitochondrial ATP dependent protease Lon antibody, Mitochondrial ATP-dependent protease Lon antibody, Mitochondrial lon peptidase 1 antibody, PIM1 antibody, Protease serine 15 antibody, PRSS15 antibody, Serine protease 15 antibody

UniProt: [P36776](#)

Application Details

Application Notes: Recommended dilution: IHC:1:20-1:200, IF:1:50-1:200,

Restrictions: For Research Use only

Handling

Format: Liquid

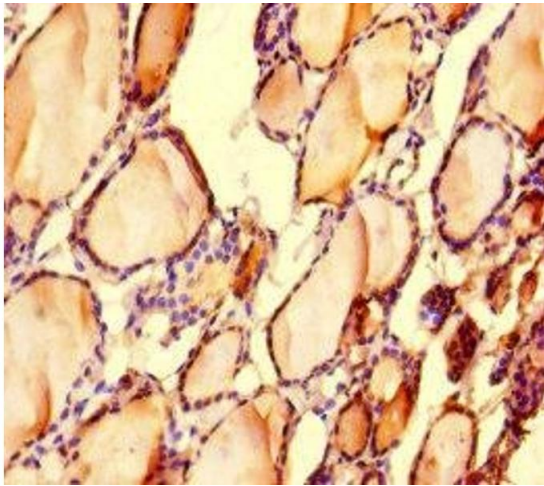
Buffer: Preservative: 0.03 % Proclin 300
Constituents: 50 % Glycerol, 0.01M PBS, PH 7.4

Preservative: ProClin

Precaution of Use: This product contains ProClin: a POISONOUS AND HAZARDOUS SUBSTANCE which should be handled by trained staff only.

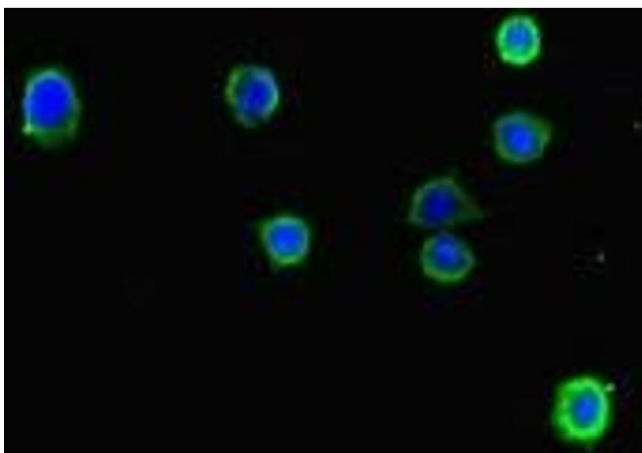
Storage: -20 °C,-80 °C

Storage Comment: Upon receipt, store at -20°C or -80°C. Avoid repeated freeze.



Immunohistochemistry

Image 1. Immunohistochemistry of paraffin-embedded human thyroid tissue using ABIN7158488 at dilution of 1:100



Immunofluorescence

Image 2. Immunofluorescent analysis of HepG2 cells using ABIN7158488 at dilution of 1:100 and Alexa Fluor 488-conjugated AffiniPure Goat Anti-Rabbit IgG(H+L)