



Datasheet for ABIN7158496  
**anti-SLC27A4 antibody (AA 494-643)**



[Go to Product page](#)

3 Images

Overview

Quantity:	100 µL
Target:	SLC27A4
Binding Specificity:	AA 494-643
Reactivity:	Human
Host:	Rabbit
Clonality:	Polyclonal
Conjugate:	This SLC27A4 antibody is un-conjugated
Application:	ELISA, Western Blotting (WB), Immunohistochemistry (IHC)

Product Details

Immunogen:	Recombinant Human Long-chain fatty acid transport protein 4 protein (494-643AA)
Isotype:	IgG
Cross-Reactivity:	Human, Mouse
Purification:	Antigen Affinity Purified

Target Details

Target:	SLC27A4
Alternative Name:	SLC27A4 ( <a href="#">SLC27A4 Products</a> )
Background:	Background: Involved in translocation of long-chain fatty acids (LFCA) across the plasma membrane. Appears to be the principal fatty acid transporter in small intestinal enterocytes.

## Target Details

---

Plays a role in the formation of the epidermal barrier. Required for fat absorption in early embryogenesis. Has acyl-CoA ligase activity for long-chain and very-long-chain fatty acids (VLCFAs). Indirectly inhibits RPE65 via substrate competition and via production of VLCFA derivatives like lignoceroyl-CoA. Prevents light-induced degeneration of rods and cones.

Aliases: SLC27A4 antibody, ACSVL4 antibody, FATP4 antibody, Long-chain fatty acid transport protein 4 antibody, FATP-4 antibody, Fatty acid transport protein 4 antibody, EC 6.2.1.- antibody, Solute carrier family 27 member 4 antibody

---

UniProt: [Q6P1M0](#)

---

Pathways: [Monocarboxylic Acid Catabolic Process](#)

## Application Details

---

Application Notes: Recommended dilution: WB:1:200-1:1000, IHC:1:20-1:200,

---

Restrictions: For Research Use only

## Handling

---

Format: Liquid

---

Buffer: PBS with 0.02 % sodium azide, 50 % glycerol, pH 7.3.

---

Preservative: Sodium azide

---

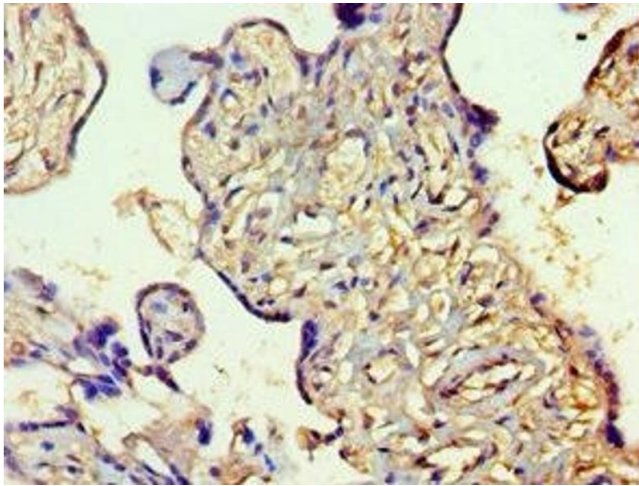
Precaution of Use: This product contains Sodium azide: a POISONOUS AND HAZARDOUS SUBSTANCE which should be handled by trained staff only.

---

Storage: -20 °C,-80 °C

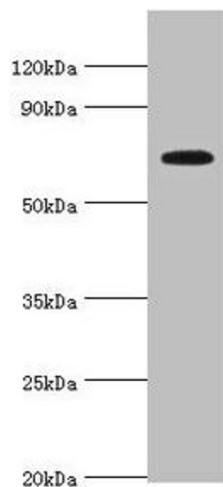
---

Storage Comment: Upon receipt, store at -20°C or -80°C. Avoid repeated freeze.



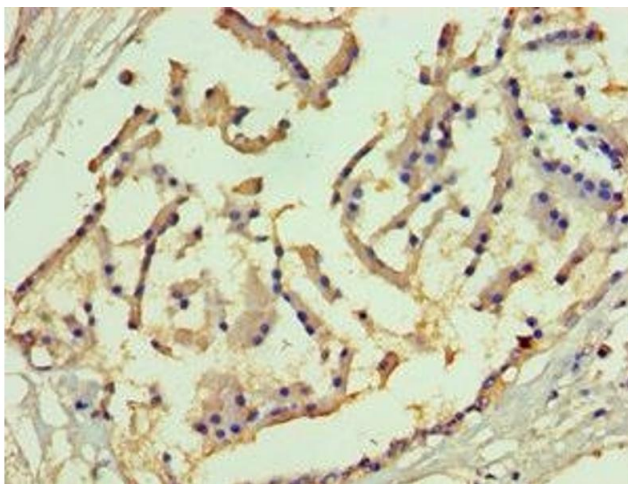
### Immunohistochemistry

**Image 1.** Immunohistochemistry of paraffin-embedded human placenta tissue using ABIN7158496 at dilution of 1:100



### Western Blotting

**Image 2.** Western blot All lanes: Long-chain fatty acid transport protein 4 antibody at 8 µg/mL + Mouse heart tissue Secondary Goat polyclonal to rabbit IgG at 1/10000 dilution Predicted band size: 73, 27 kDa Observed band size: 73 kDa



### Immunohistochemistry

**Image 3.** Immunohistochemistry of paraffin-embedded human prostate tissue using ABIN7158496 at dilution of 1:100