

Datasheet for ABIN7158533  
**anti-FCER2 antibody (AA 48-321)**

## 2 Images

[Go to Product page](#)

## Overview

Quantity:	100 µg
Target:	FCER2
Binding Specificity:	AA 48-321
Reactivity:	Human
Host:	Rabbit
Clonality:	Polyclonal
Conjugate:	This FCER2 antibody is un-conjugated
Application:	Immunohistochemistry (IHC), ELISA, Immunofluorescence (IF)

## Product Details

Immunogen:	Recombinant Human Low affinity immunoglobulin epsilon Fc receptor protein (48-321AA)
Isotype:	IgG
Cross-Reactivity:	Human
Purification:	>95%, Protein G purified

## Target Details

Target:	FCER2
Alternative Name:	FCER2 ( <a href="#">FCER2 Products</a> )
Background:	Background: Low-affinity receptor for immunoglobulin E (IgE) and CR2/CD21. Has essential roles in the regulation of IgE production and in the differentiation of B-cells (it is a B-cell-specific

## Target Details

antigen).

Aliases: Blast 2 antibody, BLAST-2 antibody, Blast2 antibody, C type lectin domain family 4 member J antibody, C-type lectin domain family 4 antibody, C-type lectin domain family 4 member J antibody, C-type lectin domain family 4, member J antibody, CD 23 antibody, CD 23A antibody, CD23 antibody, CD23 antigen antibody, CD23A antibody, CLEC 4J antibody, CLEC4J antibody, Fc epsilon receptor II antibody, Fc epsilon RII antibody, Fc fragment of IgE antibody, Fc fragment of IgE low affinity II receptor for antibody, Fc fragment of IgE receptor II antibody, Fc fragment of IgE, low affinity II, receptor for (CD23) antibody, Fc of IgE antibody, Fc of IgE, low affinity II, receptor for (CD23) antibody, Fc receptor IgE low affinity II alpha polypeptide antibody, Fc receptor, IgE, low affinity II, alpha polypeptide, isoform CRA\_a antibody, Fc-epsilon-RII antibody, FCE 2 antibody, FCE2 antibody, FCER 2 antibody, Fcer2 antibody, FCER2\_HUMAN antibody, FCER2A antibody, FceRII antibody, IgE binding factor antibody, IgE receptor lymphocyte antibody, IgE-binding factor antibody, IGEBF antibody, Immunoglobulin E binding factor antibody, Immunoglobulin E receptor antibody, Immunoglobulin E receptor, low affinity II antibody, Immunoglobulin E-binding factor antibody, Immunoglobulin epsilon chain antibody, LEUKOCYTE ANTIGEN CD23 antibody, Low Affinity IgE Receptor antibody, Low affinity immunoglobulin epsilon Fc receptor antibody, Low affinity immunoglobulin epsilon Fc receptor membrane bound form antibody, Low affinity immunoglobulin epsilon Fc receptor soluble form antibody, Ly-42 antibody, Ly42 antibody, Lymphocyte antigen CD23 antibody, Lymphocyte IgE receptor antibody, MGC93219 antibody

UniProt: [P06734](#)

Pathways: [Regulation of Leukocyte Mediated Immunity](#), [Positive Regulation of Immune Effector Process](#)

## Application Details

Application Notes: Recommended dilution: IHC:1:500-1:1000, IF:1:50-1:200,

Restrictions: For Research Use only

## Handling

Format: Liquid

Buffer: Preservative: 0.03 % Proclin 300  
Constituents: 50 % Glycerol, 0.01M PBS, PH 7.4

Preservative: ProClin

Precaution of Use: This product contains ProClin: a POISONOUS AND HAZARDOUS SUBSTANCE which should be

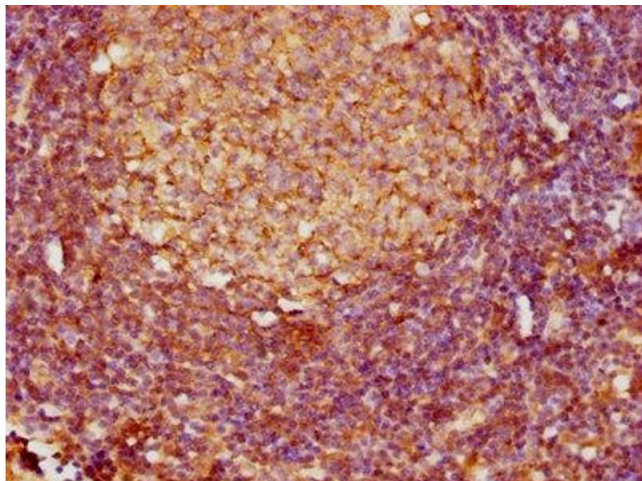
## Handling

handled by trained staff only.

Storage: -20 °C, -80 °C

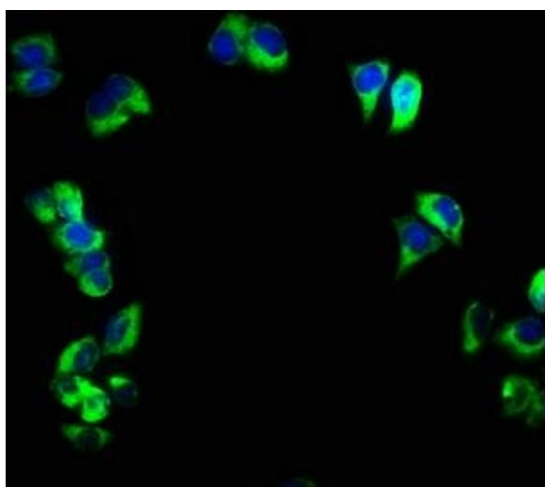
Storage Comment: Upon receipt, store at -20°C or -80°C. Avoid repeated freeze.

## Images



### Immunohistochemistry

**Image 1.** IHC image of ABIN7158533 diluted at 1:800 and staining in paraffin-embedded human lymph node tissue performed on a Leica Bond™ system. After dewaxing and hydration, antigen retrieval was mediated by high pressure in a citrate buffer (pH 6.0). Section was blocked with 10% normal goat serum 30min at RT. Then primary antibody (1% BSA) was incubated at 4°C overnight. The primary is detected by a biotinylated secondary antibody and visualized using an HRP conjugated SP system.



### Immunofluorescence

**Image 2.** Immunofluorescence staining of PC-3 cells with ABIN7158533 at 1:166, counter-stained with DAPI. The cells were fixed in 4% formaldehyde, permeabilized using 0.2% Triton X-100 and blocked in 10% normal Goat Serum. The cells were then incubated with the antibody overnight at 4°C. The secondary antibody was Alexa Fluor 488-conjugated AffiniPure Goat Anti-Rabbit IgG(H+L).