

Datasheet for ABIN7158555
anti-LDLRAP1 antibody (AA 59-308)[Go to Product page](#)

2 Images

Overview

Quantity:	100 µL
Target:	LDLRAP1
Binding Specificity:	AA 59-308
Reactivity:	Human
Host:	Rabbit
Clonality:	Polyclonal
Application:	Western Blotting (WB), Immunohistochemistry (IHC), ELISA

Product Details

Immunogen:	Recombinant Human Low density lipoprotein receptor adapter protein 1 protein (59-308AA)
Isotype:	IgG
Cross-Reactivity:	Human, Mouse
Purification:	Antigen Affinity Purified

Target Details

Target:	LDLRAP1
Alternative Name:	LDLRAP1 (LDLRAP1 Products)
Background:	Background: Adapter protein (clathrin-associated sorting protein (CLASP)) required for efficient endocytosis of the LDL receptor (LDLR) in polarized cells such as hepatocytes and lymphocytes, but not in non-polarized cells (fibroblasts). May be required for LDL binding and internalization but not for receptor clustering in coated pits. May facilitate the endocytosis of

Target Details

LDLR and LDLR-LDL complexes from coated pits by stabilizing the interaction between the receptor and the structural components of the pits. May also be involved in the internalization of other LDLR family members. Binds to phosphoinositides, which regulate clathrin bud assembly at the cell surface.

Aliases: ARH antibody, ARH GENE antibody, ARH_HUMAN antibody, ARH1 antibody, ARH2 antibody, Autosomal recessive hypercholesterolemia protein antibody, DKFZp586D0624 antibody, FHCB1 antibody, FHCB2 antibody, LDL receptor adaptor protein antibody, Ldlrap1 antibody, Low density lipoprotein receptor adapter protein 1 antibody, MGC34705 antibody, OTTHUMP00000008526 antibody

UniProt: [Q5SW96](#)

Pathways: [Lipid Metabolism](#)

Application Details

Application Notes: Recommended dilution: WB:1:500-1:2000, IHC:1:20-1:200,

Restrictions: For Research Use only

Handling

Format: Liquid

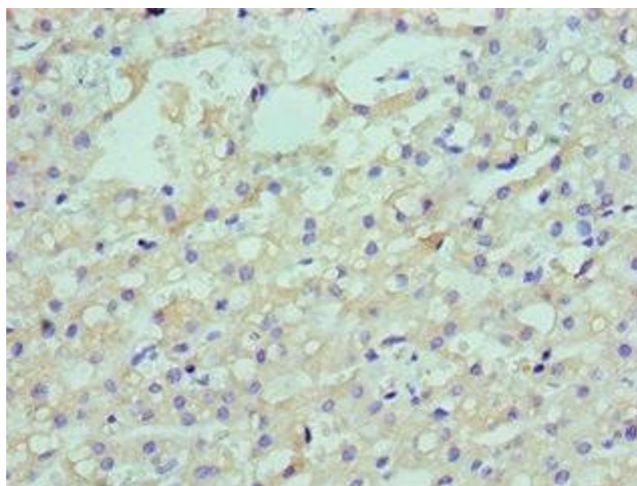
Buffer: PBS with 0.02 % sodium azide, 50 % glycerol, pH 7.3.

Preservative: Sodium azide

Precaution of Use: This product contains Sodium azide: a POISONOUS AND HAZARDOUS SUBSTANCE which should be handled by trained staff only.

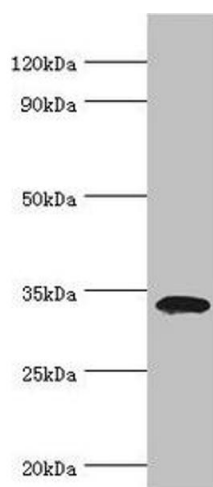
Storage: -20 °C, -80 °C

Storage Comment: Upon receipt, store at -20°C or -80°C. Avoid repeated freeze.



Immunohistochemistry

Image 1. Immunohistochemistry of paraffin-embedded human liver cancer using ABIN7158555 at dilution of 1:100



Western Blotting

Image 2. Western blot All lanes: Low density lipoprotein receptor adapter protein 1 antibody at 4 µg/mL + Mouse liver tissue Secondary Goat polyclonal to rabbit IgG at 1/10000 dilution Predicted band size: 34 kDa Observed band size: 34 kDa