



[Go to Product page](#)

Datasheet for ABIN7158577  
**anti-LRP6 antibody (AA 20-150)**

2 Images

### Overview

Quantity:	100 µL
Target:	LRP6
Binding Specificity:	AA 20-150
Reactivity:	Human
Host:	Rabbit
Clonality:	Polyclonal
Conjugate:	This LRP6 antibody is un-conjugated
Application:	Immunohistochemistry (IHC), ELISA

### Product Details

Immunogen:	Recombinant Human Low-density lipoprotein receptor-related protein 6 protein (20-150AA)
Isotype:	IgG
Cross-Reactivity:	Human
Purification:	Antigen Affinity Purified

### Target Details

Target:	LRP6
Alternative Name:	LRP6 ( <a href="#">LRP6 Products</a> )
Background:	Background: Component of the Wnt-Fzd-LRP5-LRP6 complex that triggers beta-catenin signaling through inducing aggregation of receptor-ligand complexes into ribosome-sized

## Target Details

---

signalsomes. Cell-surface coreceptor of Wnt/beta-catenin signaling, which plays a pivotal role in bone formation. The Wnt-induced Fzd/LRP6 coreceptor complex recruits DVL1 polymers to the plasma membrane which, in turn, recruits the AXIN1/GSK3B-complex to the cell surface promoting the formation of signalsomes and inhibiting AXIN1/GSK3-mediated phosphorylation and destruction of beta-catenin. Required for posterior patterning of the epiblast during gastrulation (By similarity).

Aliases: ADCAD2 antibody, C030016K15Rik antibody, Cd antibody, FLJ90062 antibody, FLJ90421 antibody, LDL receptor related protein 6 antibody, Low density lipoprotein receptor related protein 6 antibody, Low-density lipoprotein receptor-related protein 6 antibody, LRP-6 antibody, LRP6 antibody, LRP6\_HUMAN antibody, OTTHUMP00000238979 antibody, OTTHUMP00000238980 antibody, OTTHUMP00000238982 antibody, STHAG7 antibody

---

UniProt: [O75581](#)

---

Pathways: [WNT Signaling](#), [Tube Formation](#)

## Application Details

---

Application Notes: Recommended dilution: IHC:1:20-1:200,

---

Restrictions: For Research Use only

## Handling

---

Format: Liquid

---

Buffer: PBS with 0.02 % sodium azide, 50 % glycerol, pH 7.3.

---

Preservative: Sodium azide

---

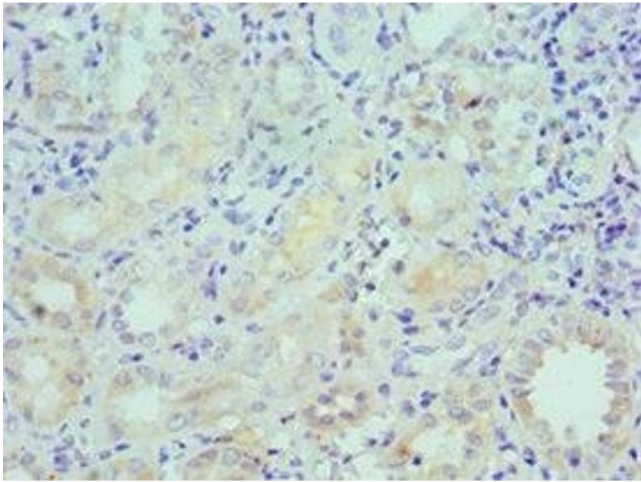
Precaution of Use: This product contains Sodium azide: a POISONOUS AND HAZARDOUS SUBSTANCE which should be handled by trained staff only.

---

Storage: -20 °C,-80 °C

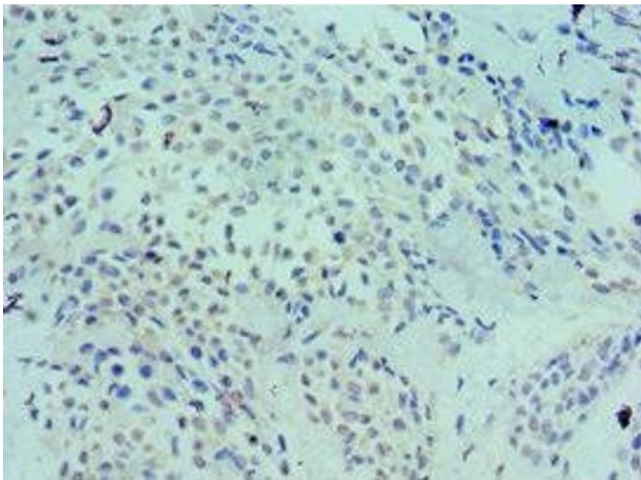
---

Storage Comment: Upon receipt, store at -20°C or -80°C. Avoid repeated freeze.



#### Immunohistochemistry

**Image 1.** Immunohistochemistry of paraffin-embedded human kidney tissue using ABIN7158577 at dilution of 1:100



#### Immunohistochemistry

**Image 2.** Immunohistochemistry of paraffin-embedded human breast cancer using ABIN7158577 at dilution of 1:100