

Datasheet for ABIN7158578
anti-LRP8 antibody (AA 131-332)[Go to Product page](#)

2 Images

Overview

Quantity:	100 µg
Target:	LRP8
Binding Specificity:	AA 131-332
Reactivity:	Human
Host:	Rabbit
Clonality:	Polyclonal
Conjugate:	This LRP8 antibody is un-conjugated
Application:	Western Blotting (WB), ELISA, Immunofluorescence (IF)

Product Details

Immunogen:	Recombinant Human Low-density lipoprotein receptor-related protein 8 protein (131-332AA)
Isotype:	IgG
Cross-Reactivity:	Human
Purification:	>95%, Protein G purified

Target Details

Target:	LRP8
Alternative Name:	LRP8 (LRP8 Products)
Background:	Background: Cell surface receptor for Reelin (RELN) and apolipoprotein E (apoE)-containing ligands. LRP8 participates in transmitting the extracellular Reelin signal to intracellular signaling

Target Details

processes, by binding to DAB1 on its cytoplasmic tail. Reelin acts via both the VLDL receptor (VLDLR) and LRP8 to regulate DAB1 tyrosine phosphorylation and microtubule function in neurons. LRP8 has higher affinity for Reelin than VLDLR. LRP8 is thus a key component of the Reelin pathway which governs neuronal layering of the forebrain during embryonic brain development. Binds the endoplasmic reticulum resident receptor-associated protein (RAP). Binds dimers of beta 2-glycoprotein I and may be involved in the suppression of platelet aggregation in the vasculature. Highly expressed in the initial segment of the epididymis, where it affects the functional expression of clusterin and phospholipid hydroperoxide glutathione peroxidase (PHGPx), two proteins required for sperm maturation. May also function as an endocytic receptor.

Aliases: APOER2 antibody, Apolipoprotein E receptor 2 antibody, low density lipoprotein receptor-related protein 8 antibody, Low-density lipoprotein receptor-related protein 8 antibody, LRP-8 antibody, LRP8 antibody, LRP8_HUMAN antibody

UniProt: [Q14114](#)

Application Details

Application Notes: Recommended dilution: WB:1:500-1:5000, IF:1:50-1:200,

Restrictions: For Research Use only

Handling

Format: Liquid

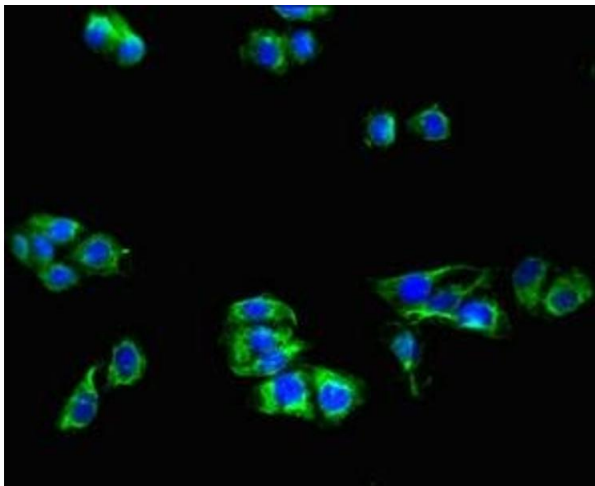
Buffer: Preservative: 0.03 % Proclin 300
Constituents: 50 % Glycerol, 0.01M PBS, PH 7.4

Preservative: ProClin

Precaution of Use: This product contains ProClin: a POISONOUS AND HAZARDOUS SUBSTANCE which should be handled by trained staff only.

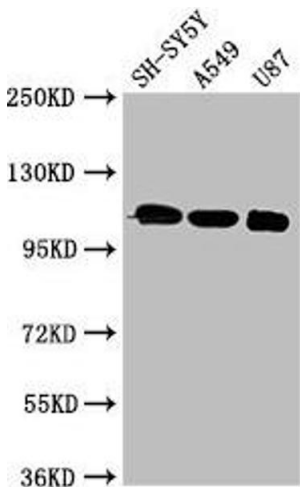
Storage: -20 °C,-80 °C

Storage Comment: Upon receipt, store at -20°C or -80°C. Avoid repeated freeze.



Immunofluorescence

Image 1. Immunofluorescent analysis of HepG2 cells using ABIN7158578 at dilution of 1:100 and Alexa Fluor 488-conjugated AffiniPure Goat Anti-Rabbit IgG(H+L)



Western Blotting

Image 2. Western Blot Positive WB detected in: SH-SY5Y whole cell lysate, A549 whole cell lysate, U87 whole cell lysate All lanes: LRP8 antibody at 3 µg/mL Secondary Goat polyclonal to rabbit IgG at 1/50000 dilution Predicted band size: 106, 78, 100, 88 kDa Observed band size: 106 kDa