



[Go to Product page](#)

Datasheet for ABIN7158587
anti-LHB antibody (AA 21-141)

2 Images

Overview

Quantity:	100 µg
Target:	LHB
Binding Specificity:	AA 21-141
Reactivity:	Human
Host:	Rabbit
Clonality:	Polyclonal
Conjugate:	This LHB antibody is un-conjugated
Application:	ELISA, Immunohistochemistry (IHC)

Product Details

Immunogen:	Recombinant Human Lutropin subunit beta protein (21-141AA)
Isotype:	IgG
Cross-Reactivity:	Human
Purification:	>95%, Protein G purified

Target Details

Target:	LHB
Alternative Name:	LHB (LHB Products)
Background:	Background: Promotes spermatogenesis and ovulation by stimulating the testes and ovaries to synthesize steroids.

Target Details

Aliases: CGB4 antibody, CHORIONIC GONADOTROPIN, BETA POLYPEPTIDE 4 antibody, hLHB antibody, Interstitial cell stimulating hormone beta chain antibody, Leutropin antibody, LH-B antibody, LHB antibody, LSH beta antibody, LSH-B antibody, LSH-beta antibody, LSHB antibody, LSHB_HUMAN antibody, Luteinizing hormone beta polypeptide antibody, Luteinizing hormone subunit beta antibody, Lutropin beta chain antibody, Lutropin subunit beta antibody

UniProt: [P01229](#)

Pathways: [Metabolism of Steroid Hormones and Vitamin D](#), [Peptide Hormone Metabolism](#), [Hormone Activity](#), [C21-Steroid Hormone Metabolic Process](#)

Application Details

Application Notes: Recommended dilution: IHC:1:20-1:200,

Restrictions: For Research Use only

Handling

Format: Liquid

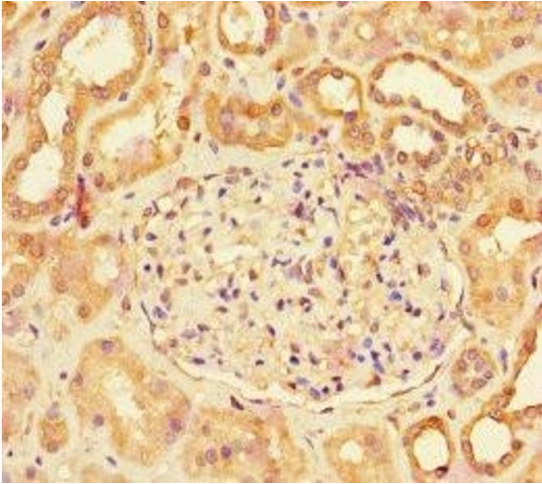
Buffer: Preservative: 0.03 % Proclin 300
Constituents: 50 % Glycerol, 0.01M PBS, PH 7.4

Preservative: ProClin

Precaution of Use: This product contains ProClin: a POISONOUS AND HAZARDOUS SUBSTANCE which should be handled by trained staff only.

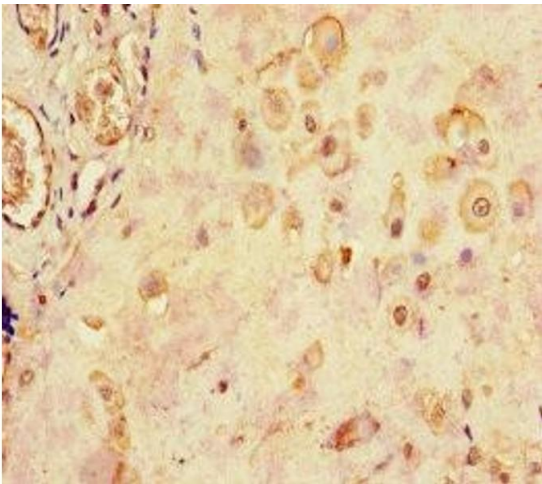
Storage: -20 °C,-80 °C

Storage Comment: Upon receipt, store at -20°C or -80°C. Avoid repeated freeze.



Immunohistochemistry

Image 1. Immunohistochemistry of paraffin-embedded human kidney tissue using ABIN7158587 at dilution of 1:100



Immunohistochemistry

Image 2. Immunohistochemistry of paraffin-embedded human placenta tissue using ABIN7158587 at dilution of 1:100