



[Go to Product page](#)

Datasheet for ABIN7158609
anti-LYVE1 antibody (AA 20-238)

3 Images

Overview

Quantity:	100 µg
Target:	LYVE1
Binding Specificity:	AA 20-238
Reactivity:	Human
Host:	Rabbit
Clonality:	Polyclonal
Conjugate:	This LYVE1 antibody is un-conjugated
Application:	Western Blotting (WB), ELISA, Immunohistochemistry (IHC), Immunofluorescence (IF)

Product Details

Immunogen:	Recombinant Human Lymphatic vessel endothelial hyaluronic acid receptor 1 protein (20-238AA)
Isotype:	IgG
Cross-Reactivity:	Human, Mouse
Purification:	>95%, Protein G purified

Target Details

Target:	LYVE1
Alternative Name:	LYVE1 (LYVE1 Products)
Background:	Background: Ligand-specific transporter trafficking between intracellular organelles (TGN) and

Target Details

the plasma membrane. Plays a role in autocrine regulation of cell growth mediated by growth regulators containing cell surface retention sequence binding (CRS). May act as a hyaluronan (HA) transporter, either mediating its uptake for catabolism within lymphatic endothelial cells themselves, or its transport into the lumen of afferent lymphatic vessels for subsequent re-uptake and degradation in lymph nodes.

Aliases: Cell surface retention sequence-binding protein 1 antibody, CRSBP 1 antibody, CRSBP-1 antibody, CRSBP1 antibody, extracellular link domain containing 1 antibody, extracellular link domain-containing 1 antibody, Extracellular link domain-containing protein 1 antibody, HAR antibody, Hyaluronic acid receptor antibody, Lymphatic endothelium specific hyaluronan receptor antibody, lymphatic vessel endothelial hyaluronan receptor 1 antibody, Lymphatic vessel endothelial hyaluronic acid receptor 1 antibody, LYVE 1 antibody, LYVE-1 antibody, LYVE1 antibody, LYVE1_HUMAN antibody, XLKD1 antibody

UniProt: [Q9Y5Y7](#)

Pathways: [Glycosaminoglycan Metabolic Process](#)

Application Details

Application Notes: Recommended dilution: WB:1:500-1:5000, IHC:1:20-1:200, IF:1:50-1:200,

Restrictions: For Research Use only

Handling

Format: Liquid

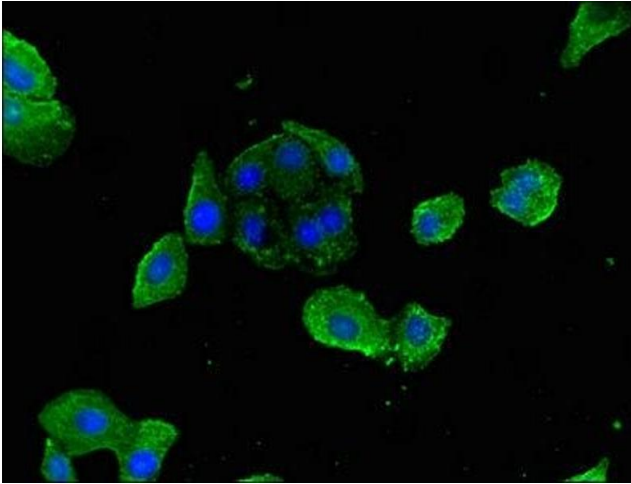
Buffer: Preservative: 0.03 % Proclin 300
Constituents: 50 % Glycerol, 0.01M PBS, pH 7.4

Preservative: ProClin

Precaution of Use: This product contains ProClin: a POISONOUS AND HAZARDOUS SUBSTANCE which should be handled by trained staff only.

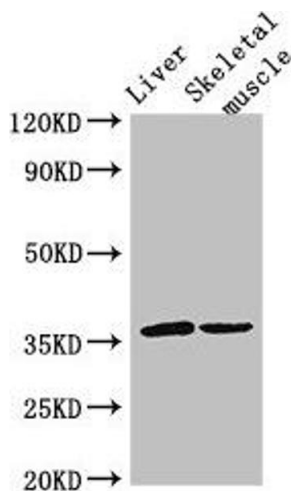
Storage: -20 °C,-80 °C

Storage Comment: Upon receipt, store at -20°C or -80°C. Avoid repeated freeze.



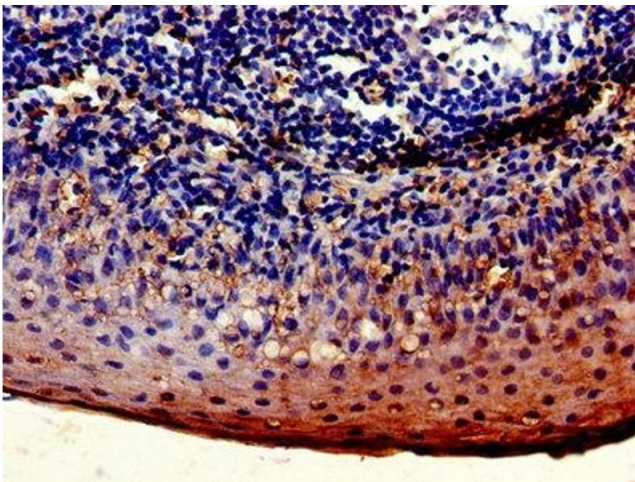
Immunofluorescence

Image 1. Immunofluorescence staining of HepG2 cells with ABIN7158609 at 1:200, counter-stained with DAPI. The cells were fixed in 4% formaldehyde, permeabilized using 0.2% Triton X-100 and blocked in 10% normal Goat Serum. The cells were then incubated with the antibody overnight at 4°C. The secondary antibody was Alexa Fluor 488-conjugated AffiniPure Goat Anti-Rabbit IgG(H+L).



Western Blotting

Image 2. Western Blot Positive WB detected in: Mouse liver tissue, Mouse skeletal muscle tissue All lanes: LYVE1 antibody at 3 µg/mL Secondary Goat polyclonal to rabbit IgG at 1/50000 dilution Predicted band size: 36 kDa Observed band size: 36 kDa



Immunohistochemistry

Image 3. Immunohistochemistry of paraffin-embedded human tonsil tissue using ABIN7158609 at dilution of 1:100