



[Go to Product page](#)

Datasheet for ABIN7158617
anti-LAG3 antibody (AA 29-450)

4 Images

Overview

Quantity:	100 µL
Target:	LAG3
Binding Specificity:	AA 29-450
Reactivity:	Human
Host:	Mouse
Clonality:	Monoclonal
Conjugate:	This LAG3 antibody is un-conjugated
Application:	Western Blotting (WB), ELISA, Immunohistochemistry (IHC), Flow Cytometry (FACS)

Product Details

Immunogen:	Recombinant Human Lymphocyte activation gene 3 protein (29-450AA)
Clone:	8B12E10
Isotype:	IgG1, IgG1 kappa
Cross-Reactivity:	Human
Purification:	Protein G purified

Target Details

Target:	LAG3
Alternative Name:	LAG3 (LAG3 Products)
Background:	CD223 antibody, CD223 antigen antibody, FDC protein antibody, LAG-3 antibody, Lag3 antibody,

Target Details

LAG3_HUMAN antibody, Lymphocyte activating 3 antibody, Lymphocyte activation gene 3 antibody, Lymphocyte activation gene 3 protein antibody, Protein FDC antibody

UniProt: [P18627](#)

Pathways: [Regulation of Leukocyte Mediated Immunity](#), [Positive Regulation of Immune Effector Process](#), [Cancer Immune Checkpoints](#)

Application Details

Application Notes: Recommended dilution: WB: 1:1000-1:5000, IHC: 1:200-1:1000, FC: 1:50-1:200,

Restrictions: For Research Use only

Handling

Format: Liquid

Buffer: Preservative: 0.03 % Proclin 300
Constituents: 50 % Glycerol, 0.01M PBS, PH 7.4

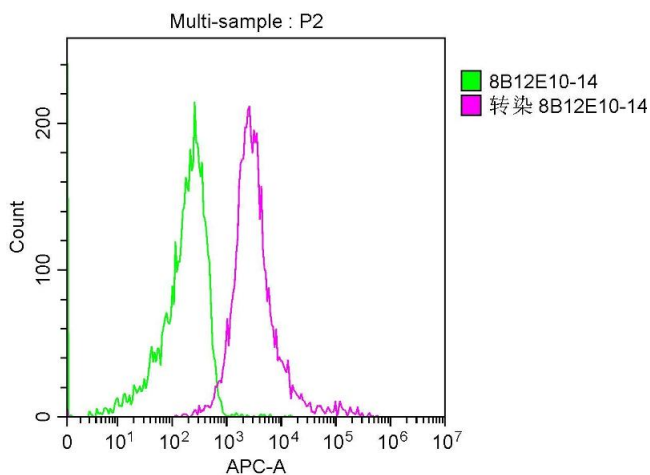
Preservative: ProClin

Precaution of Use: This product contains ProClin: a POISONOUS AND HAZARDOUS SUBSTANCE which should be handled by trained staff only.

Storage: -20 °C,-80 °C

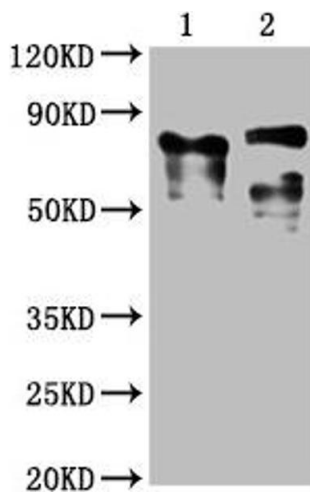
Storage Comment: Upon receipt, store at -20°C or -80°C. Avoid repeated freeze.

Images



Flow Cytometry

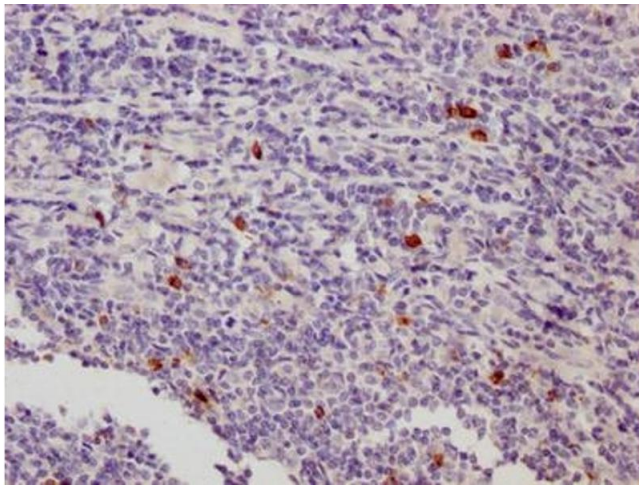
Image 1. Overlay Peak curve showing A549 cells stained with ABIN7158617 (red line) at 1:100. The cells were incubated in 10 % normal goat serum to block non-specific protein-protein interactions followed by the antibody (1 μ g/ 1×10^6 cells) for 1h at 4 °C. The secondary antibody used was FITC-conjugated Goat Anti-Mouse IgG(H+L) at 1/100 dilution for 30 min at 4 °C. Isotype control antibody (green line) was mouse IgG1 (1 μ g/ 1×10^6 cells) used under the same conditions. Acquisition of >10,000 events was



performed.

Western Blotting

Image 2. Western Blot Positive WB detected in: 1 lane: Recombinant proteins with LAG3, 2 lane: 293F whole cell lysate transfected with LAG3 All lanes: LAG3 antibody at 1:2000 Secondary Goat polyclonal to mouse IgG at 1/50000 dilution Predicted band size: 76, 88 KDa Observed band size: 76, 88 KDa Exposure time:5 min



Immunohistochemistry

Image 3. IHC image of ABIN7158617 diluted at 1:500 and staining in paraffin-embedded human tonsil tissue performed on a Leica Bond™ system. After dewaxing and hydration, antigen retrieval was mediated by high pressure in a citrate buffer (pH 6.0). Section was blocked with 10 % normal goat serum 30 min at 37 °C Then primary antibody (1 % BSA) was incubated at 4 °C overnight. The primary is detected by a Goat anti-Mouse IgG labeled by HRP and visualized using 0.05 % DAB.

Please check the [product details page](#) for more images. Overall 4 images are available for ABIN7158617.