



[Go to Product page](#)

Datasheet for ABIN7158656
anti-LEF1 antibody (AA 75-216)

4 Images

Overview

Quantity:	100 µg
Target:	LEF1
Binding Specificity:	AA 75-216
Reactivity:	Human
Host:	Rabbit
Clonality:	Polyclonal
Conjugate:	This LEF1 antibody is un-conjugated
Application:	Western Blotting (WB), ELISA, Immunohistochemistry (IHC), Immunofluorescence (IF)

Product Details

Immunogen:	Recombinant Human Lymphoid enhancer-binding factor 1 protein (75-216AA)
Isotype:	IgG
Cross-Reactivity:	Human, Mouse
Purification:	>95%, Protein G purified

Target Details

Target:	LEF1
Alternative Name:	LEF1 (LEF1 Products)
Background:	Background: Participates in the Wnt signaling pathway. Activates transcription of target genes in the presence of CTNNB1 and EP300. May play a role in hair cell differentiation and follicle

Target Details

morphogenesis. TLE1, TLE2, TLE3 and TLE4 repress transactivation mediated by LEF1 and CTNNB1. Regulates T-cell receptor alpha enhancer function. Binds DNA in a sequence-specific manner. PIAG antagonizes both Wnt-dependent and Wnt-independent activation by LEF1 (By similarity). Isoform 3 lacks the CTNNB1 interaction domain and may be an antagonist for Wnt signaling. Isoform 5 transcriptionally activates the fibronectin promoter, binds to and represses transcription from the E-cadherin promoter in a CTNNB1-independent manner, and is involved in reducing cellular aggregation and increasing cell migration of pancreatic cancer cells. Isoform 1 transcriptionally activates MYC and CCND1 expression and enhances proliferation of pancreatic tumor cells.

Aliases: DKFZp586H0919 antibody, FLJ46390 antibody, LEF 1 antibody, LEF-1 antibody, Lef1 antibody, LEF1_HUMAN antibody, Lymphoid enhancer binding factor 1 antibody, Lymphoid enhancer-binding factor 1 antibody, T cell specific transcription factor 1 alpha antibody, T cell-specific transcription factor 1-alpha antibody, TCF 1 alpha antibody, TCF1 alpha antibody, TCF1-alpha antibody, TCF10 antibody, TCF1alpha antibody, TCF7L3 antibody, Transcription factor T cell specific 1 alpha antibody

UniProt: [Q9UJU2](#)

Pathways: [WNT Signaling](#), [Intracellular Steroid Hormone Receptor Signaling Pathway](#), [Regulation of Hormone Metabolic Process](#), [Nuclear Hormone Receptor Binding](#), [Chromatin Binding](#)

Application Details

Application Notes: Recommended dilution: WB:1:1000-1:5000, IHC:1:20-1:200, IF:1:50-1:200,

Restrictions: For Research Use only

Handling

Format: Liquid

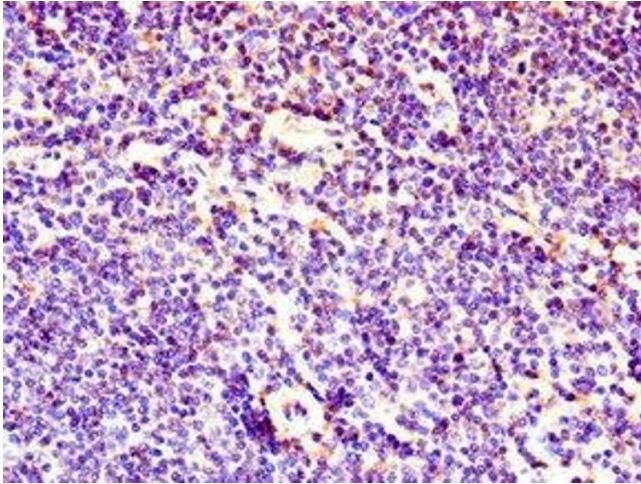
Buffer: Preservative: 0.03 % Proclin 300
Constituents: 50 % Glycerol, 0.01M PBS, PH 7.4

Preservative: ProClin

Precaution of Use: This product contains ProClin: a POISONOUS AND HAZARDOUS SUBSTANCE which should be handled by trained staff only.

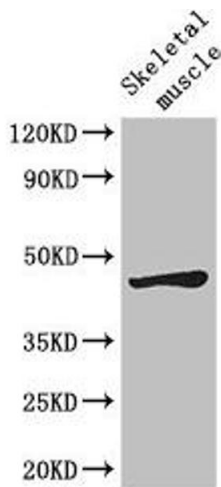
Storage: -20 °C,-80 °C

Storage Comment: Upon receipt, store at -20°C or -80°C. Avoid repeated freeze.



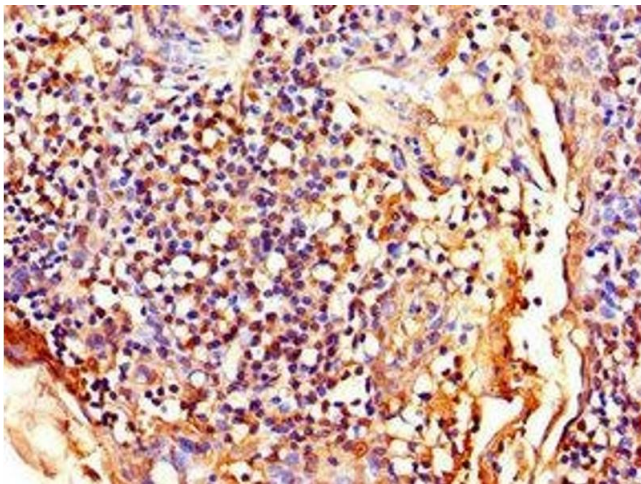
Immunohistochemistry

Image 1. Immunohistochemistry of paraffin-embedded human lymph node tissue using ABIN7158656 at dilution of 1:100



Western Blotting

Image 2. Western Blot Positive WB detected in: Mouse skeletal muscle tissue All lanes: LEF1 antibody at 2.7 µg/mL Secondary Goat polyclonal to rabbit IgG at 1/50000 dilution Predicted band size: 45, 36, 32, 24, 42, 43, 35 kDa Observed band size: 45 kDa



Immunohistochemistry

Image 3. Immunohistochemistry of paraffin-embedded human tonsil tissue using ABIN7158656 at dilution of 1:100

Please check the [product details page](#) for more images. Overall 4 images are available for ABIN7158656.