



Datasheet for ABIN7158687  
**anti-KRCC1 antibody (AA 1-259)**



[Go to Product page](#)

1 Image

Overview

Quantity:	100 µg
Target:	KRCC1
Binding Specificity:	AA 1-259
Reactivity:	Human
Host:	Rabbit
Clonality:	Polyclonal
Conjugate:	This KRCC1 antibody is un-conjugated
Application:	ELISA, Immunofluorescence (IF)

Product Details

Immunogen:	Recombinant Human Lysine-rich coiled-coil protein 1 protein (1-259AA)
Isotype:	IgG
Cross-Reactivity:	Human
Purification:	Antigen Affinity Purified

Target Details

Target:	KRCC1
Alternative Name:	KRCC1 ( <a href="#">KRCC1 Products</a> )
Background:	Background: mitophagy in response to mitochondrial depolarization Aliases: KRCC1 antibody, CHBP2 antibody, BM-003 antibody, BM-044Lysine-rich coiled-coil

## Target Details

protein 1 antibody, Cryptogenic hepatitis-binding protein 2 antibody

UniProt: [Q9NPI7](#)

## Application Details

Application Notes: Recommended dilution: IF:1:50-1:200,

Restrictions: For Research Use only

## Handling

Format: Liquid

Buffer: Preservative: 0.03 % Proclin 300  
Constituents: 50 % Glycerol, 0.01M PBS, PH 7.4

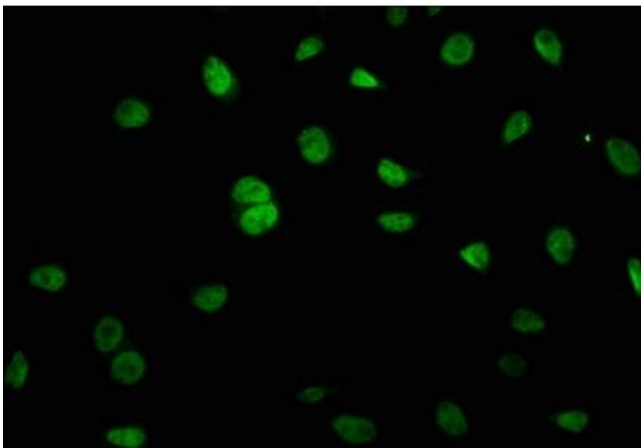
Preservative: ProClin

Precaution of Use: This product contains ProClin: a POISONOUS AND HAZARDOUS SUBSTANCE which should be handled by trained staff only.

Storage: -20 °C,-80 °C

Storage Comment: Upon receipt, store at -20°C or -80°C. Avoid repeated freeze.

## Images



### Immunofluorescence

**Image 1.** Immunofluorescence staining of A549 cells with ABIN7158687 at 1:66, counter-stained with DAPI. The cells were fixed in 4% formaldehyde, permeabilized using 0.2% Triton X-100 and blocked in 10% normal Goat Serum. The cells were then incubated with the antibody overnight at 4°C. The secondary antibody was Alexa Fluor 488-conjugated AffiniPure Goat Anti-Rabbit IgG(H+L).