



Datasheet for ABIN7158695
anti-KDM4A antibody (AA 127-364)



[Go to Product page](#)

3 Images

Overview

Quantity:	100 µg
Target:	KDM4A
Binding Specificity:	AA 127-364
Reactivity:	Human
Host:	Rabbit
Clonality:	Polyclonal
Conjugate:	This KDM4A antibody is un-conjugated
Application:	ELISA, Immunohistochemistry (IHC), Immunofluorescence (IF)

Product Details

Immunogen:	Recombinant Human Lysine-specific demethylase 4A protein (127-364AA)
Isotype:	IgG
Cross-Reactivity:	Human
Purification:	>95%, Protein G purified

Target Details

Target:	KDM4A
Alternative Name:	KDM4A (KDM4A Products)
Background:	Background: Histone demethylase that specifically demethylates 'Lys-9' and 'Lys-36' residues of histone H3, thereby playing a central role in histone code. Does not demethylate

Target Details

histone H3 'Lys-4', H3 'Lys-27' nor H4 'Lys-20'. Demethylates trimethylated H3 'Lys-9' and H3 'Lys-36' residue, while it has no activity on mono- and dimethylated residues.

Demethylation of Lys residue generates formaldehyde and succinate. Participates in transcriptional repression of ASCL2 and E2F-responsive promoters via the recruitment of histone deacetylases and NCOR1, respectively.

Aliases: JHDM3A antibody, JmjC domain containing histone demethylation protein 3A antibody, JmjC domain-containing histone demethylation protein 3A antibody, JMJD2 antibody, JMJD2A antibody, jumonji C domain containing histone demethylase 3A antibody, Jumonji domain containing 2 antibody, Jumonji domain containing 2A antibody, Jumonji domain containing protein 2A antibody, Jumonji domain-containing protein 2A antibody, KDM4A antibody, KDM4A_HUMAN antibody, KIAA0677 antibody, Lysine (K) specific demethylase 4A antibody, Lysine-specific demethylase 4A antibody, TDRD14A antibody, Tudor domain containing 14A antibody

UniProt: [075164](#)

Pathways: [Warburg Effect](#)

Application Details

Application Notes: Recommended dilution: IHC:1:20-1:200, IF:1:50-1:200,

Restrictions: For Research Use only

Handling

Format: Liquid

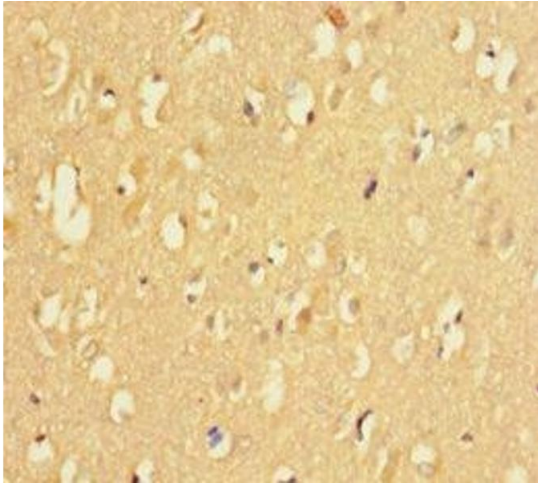
Buffer: Preservative: 0.03 % Proclin 300
Constituents: 50 % Glycerol, 0.01M PBS, PH 7.4

Preservative: ProClin

Precaution of Use: This product contains ProClin: a POISONOUS AND HAZARDOUS SUBSTANCE which should be handled by trained staff only.

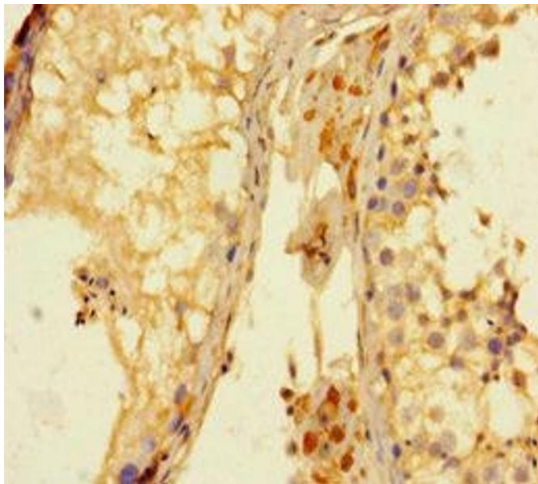
Storage: -20 °C,-80 °C

Storage Comment: Upon receipt, store at -20°C or -80°C. Avoid repeated freeze.



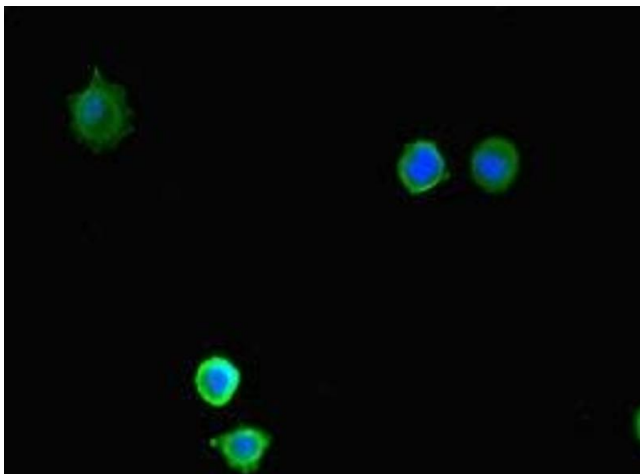
Immunohistochemistry

Image 1. Immunohistochemistry of paraffin-embedded human brain tissue using ABIN7158695 at dilution of 1:100



Immunohistochemistry

Image 2. Immunohistochemistry of paraffin-embedded human testis tissue using ABIN7158695 at dilution of 1:100



Immunofluorescence

Image 3. Immunofluorescent analysis of MCF-7 cells using ABIN7158695 at dilution of 1:100 and Alexa Fluor 488-conjugated AffiniPure Goat Anti-Rabbit IgG(H+L)