



[Go to Product page](#)

Datasheet for ABIN7158699
anti-KDM4B antibody (AA 1-260)

2 Images

Overview

Quantity:	100 µL
Target:	KDM4B
Binding Specificity:	AA 1-260
Reactivity:	Human
Host:	Rabbit
Clonality:	Polyclonal
Application:	Western Blotting (WB), ELISA, Immunohistochemistry (IHC)

Product Details

Immunogen:	Recombinant Human Lysine-specific demethylase 4B protein (1-260AA)
Isotype:	IgG
Cross-Reactivity:	Human
Purification:	Antigen Affinity Purified

Target Details

Target:	KDM4B
Alternative Name:	KDM4B (KDM4B Products)
Background:	Background: Histone demethylase that specifically demethylates Lys-9 of histone H3, thereby playing a role in histone code. Does not demethylate histone H3 Lys-4, H3 Lys-27, H3 Lys-36 nor H4 Lys-20. Only able to demethylate trimethylated H3 Lys-9, with a weaker activity than KDM4A, KDM4C and KDM4D. Demethylation of Lys residue

Target Details

generates formaldehyde and succinate.

Aliases: JHDM3B antibody, JmjC domain-containing histone demethylation protein 3B antibody, JMJD2B antibody, Jumonji domain containing 2B antibody, Jumonji domain containing protein 2B antibody, Jumonji domain-containing protein 2B antibody, Kdm4b antibody, KDM4B_HUMAN antibody, KIAA0876 antibody, Lysine (K) specific demethylase 4B antibody, Lysine demethylase 4B antibody, Lysine-specific demethylase 4B antibody, TDRD14B antibody, Tudor domain containing 14B antibody

UniProt: [O94953](#)

Pathways: [Warburg Effect](#)

Application Details

Application Notes: Recommended dilution: WB:1:200-1:1000, IHC:1:20-1:200,

Restrictions: For Research Use only

Handling

Format: Liquid

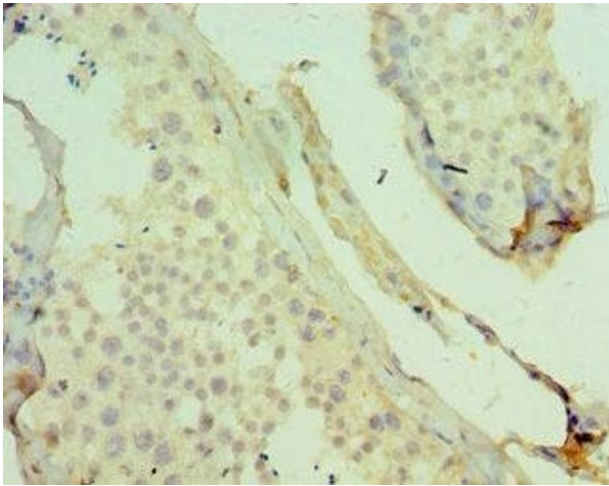
Buffer: PBS with 0.02 % sodium azide, 50 % glycerol, pH 7.3.

Preservative: Sodium azide

Precaution of Use: This product contains Sodium azide: a POISONOUS AND HAZARDOUS SUBSTANCE which should be handled by trained staff only.

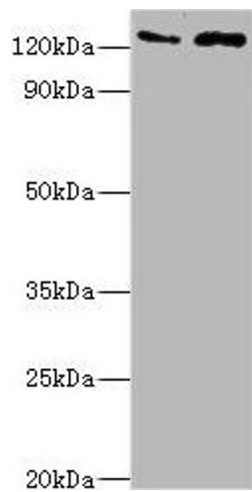
Storage: -20 °C,-80 °C

Storage Comment: Upon receipt, store at -20°C or -80°C. Avoid repeated freeze.



Immunohistochemistry

Image 1. Immunohistochemistry of paraffin-embedded human testis tissue using ABIN7158699 at dilution of 1:100



Western Blotting

Image 2. Western blot All lanes: KDM4B antibody at 4 μ g/mL Lane 1: Jurkat whole cell lysate Lane 2: k562 whole cell lysate Secondary Goat polyclonal to rabbit IgG at 1/10000 dilution Predicted band size: 122, 51 kDa Observed band size: 122 kDa