



[Go to Product page](#)

Datasheet for ABIN7158700
anti-KDM4C antibody (AA 450-600)

2 Images

Overview

Quantity:	100 µg
Target:	KDM4C
Binding Specificity:	AA 450-600
Reactivity:	Human
Host:	Rabbit
Clonality:	Polyclonal
Conjugate:	This KDM4C antibody is un-conjugated
Application:	ELISA, Immunohistochemistry (IHC)

Product Details

Immunogen:	Recombinant Human Lysine-specific demethylase 4C protein (450-600AA)
Isotype:	IgG
Cross-Reactivity:	Human
Purification:	>95%, Protein G purified

Target Details

Target:	KDM4C
Alternative Name:	KDM4C (KDM4C Products)
Background:	Background: Histone demethylase that specifically demethylates '\\Lys-9\\' and '\\Lys-36\\' residues of histone H3, thereby playing a central role in histone code. Does not demethylate

Target Details

histone H3 Lys-4, H3 Lys-27 nor H4 Lys-20. Demethylates trimethylated H3 Lys-9 and H3 Lys-36 residue, while it has no activity on mono- and dimethylated residues. Demethylation of Lys residue generates formaldehyde and succinate.

Aliases: bA146B14.1 antibody, GASC 1 protein antibody, GASC-1 protein antibody, GASC1 antibody, Gene amplified in squamous cell carcinoma 1 protein antibody, JHDM3C antibody, JmjC domain containing histone demethylation protein 3C antibody, JmjC domain-containing histone demethylation protein 3C antibody, JMJD2C antibody, Jumonji domain containing 2C antibody, Jumonji domain containing protein 2C antibody, Jumonji domain-containing protein 2C antibody, Kdm4c antibody, KDM4C_HUMAN antibody, Lysine (K) specific demethylase 4C antibody, Lysine demethylase 4C antibody, Lysine-specific demethylase 4C antibody, TDRD14C antibody, Tudor domain containing 14C antibody

UniProt: [Q9H3R0](#)

Pathways: [Nuclear Hormone Receptor Binding](#), [Warburg Effect](#)

Application Details

Application Notes: Recommended dilution: IHC:1:20-1:200,

Restrictions: For Research Use only

Handling

Format: Liquid

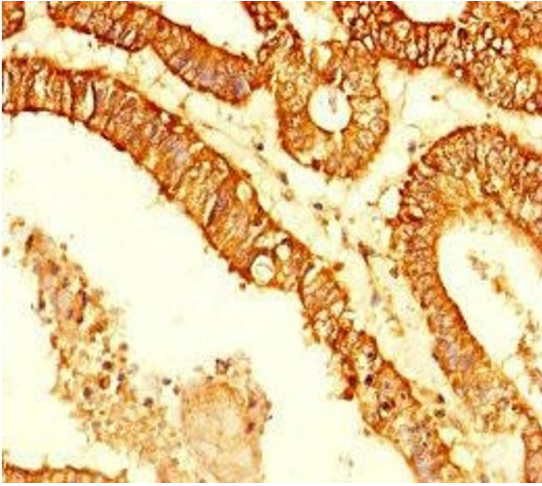
Buffer: Preservative: 0.03 % Proclin 300
Constituents: 50 % Glycerol, 0.01M PBS, PH 7.4

Preservative: ProClin

Precaution of Use: This product contains ProClin: a POISONOUS AND HAZARDOUS SUBSTANCE which should be handled by trained staff only.

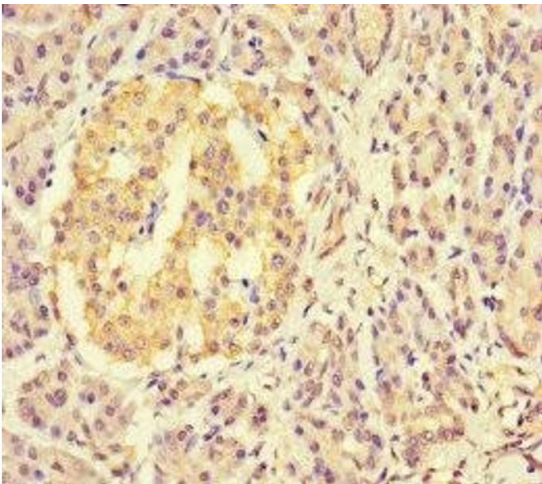
Storage: -20 °C,-80 °C

Storage Comment: Upon receipt, store at -20°C or -80°C. Avoid repeated freeze.



Immunohistochemistry

Image 1. Immunohistochemistry of paraffin-embedded human endometrial cancer using ABIN7158700 at dilution of 1:100



Immunohistochemistry

Image 2. Immunohistochemistry of paraffin-embedded human pancreatic tissue using ABIN7158700 at dilution of 1:100