



[Go to Product page](#)

Datasheet for ABIN7158704

anti-JMJD2D antibody (AA 337-499)

2 Images

Overview

Quantity:	100 µg
Target:	JMJD2D (KDM4D)
Binding Specificity:	AA 337-499
Reactivity:	Human
Host:	Rabbit
Clonality:	Polyclonal
Conjugate:	This JMJD2D antibody is un-conjugated
Application:	ELISA, Immunohistochemistry (IHC), Immunofluorescence (IF)

Product Details

Immunogen:	Recombinant Human Lysine-specific demethylase 4D protein (337-499AA)
Isotype:	IgG
Cross-Reactivity:	Human
Purification:	>95%, Protein G purified

Target Details

Target:	JMJD2D (KDM4D)
Alternative Name:	KDM4D (KDM4D Products)
Background:	Background: Histone demethylase that specifically demethylates 'Lys-9' of histone H3, thereby playing a central role in histone code. Does not demethylate histone H3 'Lys-4', H3

Target Details

'Lys-27', H3 'Lys-36' nor H4 'Lys-20'. Demethylates both di- and trimethylated H3 'Lys-9' residue, while it has no activity on monomethylated residues. Demethylation of Lys residue generates formaldehyde and succinate.

Aliases: JHD3D antibody, JHDM3D antibody, JmjC domain-containing histone demethylation protein 3D antibody, Jumonji domain-containing protein 2D antibody, Kdm4d antibody, KDM4D_HUMAN antibody, Lysine-specific demethylase 4D antibody

UniProt: [Q6B0I6](#)

Pathways: [Warburg Effect](#)

Application Details

Application Notes: Recommended dilution: IHC:1:20-1:200, IF:1:50-1:200,

Restrictions: For Research Use only

Handling

Format: Liquid

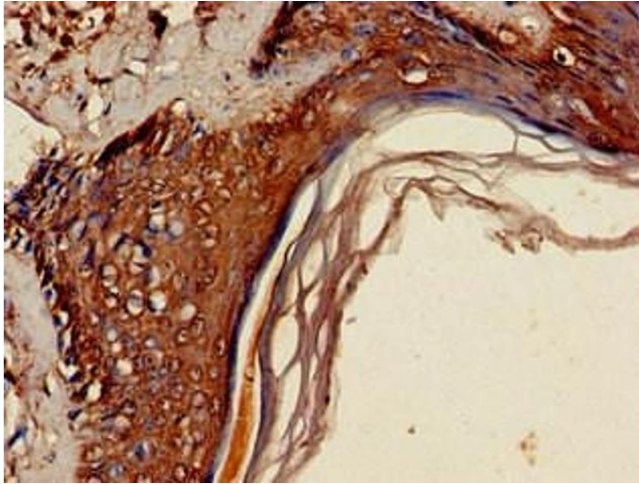
Buffer: Preservative: 0.03 % Proclin 300
Constituents: 50 % Glycerol, 0.01M PBS, pH 7.4

Preservative: ProClin

Precaution of Use: This product contains ProClin: a POISONOUS AND HAZARDOUS SUBSTANCE which should be handled by trained staff only.

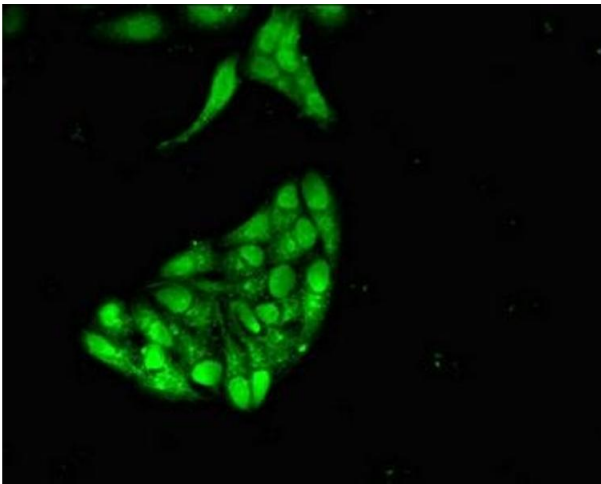
Storage: -20 °C,-80 °C

Storage Comment: Upon receipt, store at -20°C or -80°C. Avoid repeated freeze.



Immunohistochemistry

Image 1. Immunohistochemistry of paraffin-embedded human skin tissue using ABIN7158704 at dilution of 1:100



Immunofluorescence

Image 2. Immunofluorescent analysis of HeLa cells using ABIN7158704 at dilution of 1:100 and Alexa Fluor 488-conjugated AffiniPure Goat Anti-Rabbit IgG(H+L)