

Datasheet for ABIN7158728  
**anti-KDM1B antibody (AA 451-544)**[Go to Product page](#)

## 2 Images

## Overview

Quantity:	100 µg
Target:	KDM1B
Binding Specificity:	AA 451-544
Reactivity:	Human
Host:	Rabbit
Clonality:	Polyclonal
Conjugate:	This KDM1B antibody is un-conjugated
Application:	ELISA, Immunohistochemistry (IHC)

## Product Details

Immunogen:	Recombinant Human Lysine-specific histone demethylase 1B protein (451-544AA)
Isotype:	IgG
Cross-Reactivity:	Human
Purification:	>95%, Protein G purified

## Target Details

Target:	KDM1B
Alternative Name:	KDM1B ( <a href="#">KDM1B Products</a> )
Background:	Background: Histone demethylase that demethylates 'Lys-4' of histone H3, a specific tag for epigenetic transcriptional activation, thereby acting as a corepressor. Required for de novo DNA

## Target Details

methylation of a subset of imprinted genes during oogenesis. Acts by oxidizing the substrate by FAD to generate the corresponding imine that is subsequently hydrolyzed. Demethylates both mono- and di-methylated 'Lys-4' of histone H3. Has no effect on tri-methylated 'Lys-4', mono-, di- or tri-methylated 'Lys-9', mono-, di- or tri-methylated 'Lys-27', mono-, di- or tri-methylated 'Lys-36' of histone H3, or on mono-, di- or tri-methylated 'Lys-20' of histone H4 (By similarity).

Aliases: amine oxidase (flavin containing) domain 1 antibody, amine oxidase, flavin containing 1 antibody, AOF1 antibody, bA204B7.3 antibody, C6orf193 antibody, dJ298J15.2 antibody, Flavin-containing amine oxidase domain-containing protein 1 antibody, FLJ33898 antibody, FLJ34109 antibody, FLJ43328 antibody, KDM1B antibody, KDM1B\_HUMAN antibody, LSD2 antibody, lysine (K)-specific demethylase 1B antibody, Lysine-specific demethylase 2 antibody, Lysine-specific histone demethylase 1B antibody, Lysine-specific histone demethylase 2 antibody

UniProt: [Q8NB78](#)

Pathways: [Warburg Effect](#)

## Application Details

Application Notes: Recommended dilution: IHC:1:20-1:200,

Restrictions: For Research Use only

## Handling

Format: Liquid

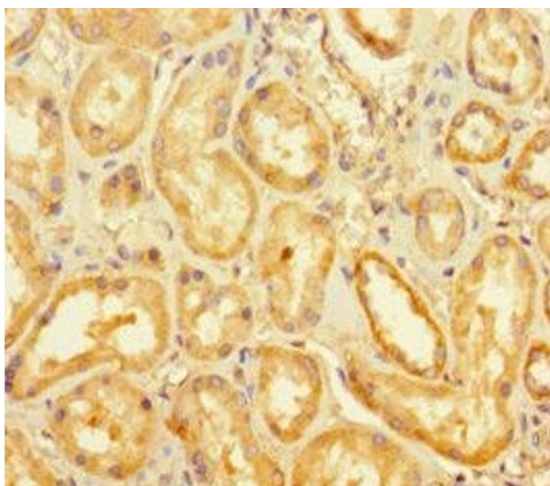
Buffer: Preservative: 0.03 % Proclin 300  
Constituents: 50 % Glycerol, 0.01M PBS, PH 7.4

Preservative: ProClin

Precaution of Use: This product contains ProClin: a POISONOUS AND HAZARDOUS SUBSTANCE which should be handled by trained staff only.

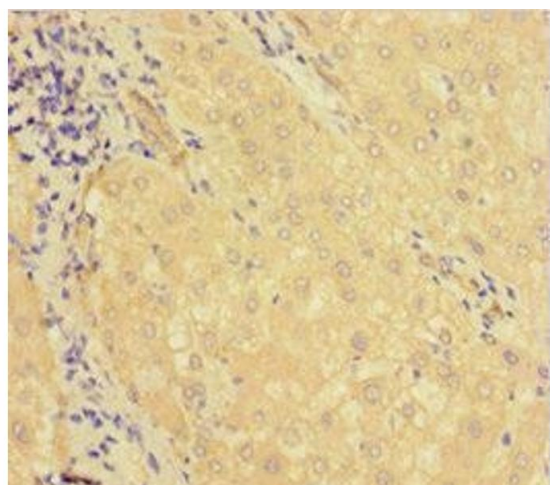
Storage: -20 °C,-80 °C

Storage Comment: Upon receipt, store at -20°C or -80°C. Avoid repeated freeze.



#### Immunohistochemistry

**Image 1.** Immunohistochemistry of paraffin-embedded human kidney tissue using ABIN7158728 at dilution of 1:100



#### Immunohistochemistry

**Image 2.** Immunohistochemistry of paraffin-embedded human liver tissue using ABIN7158728 at dilution of 1:100